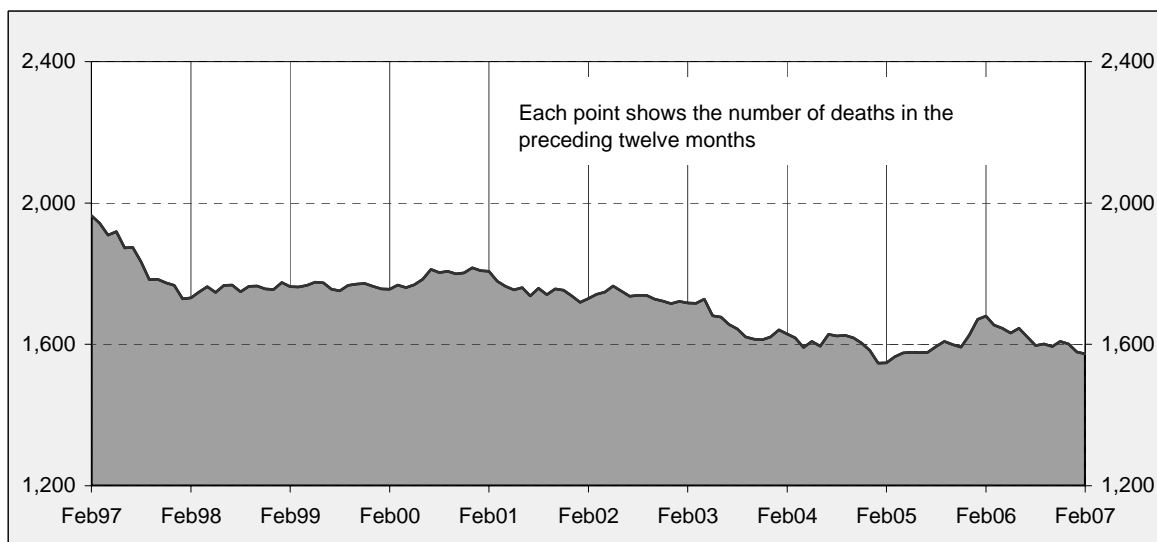




### Australian road deaths for 12 months to date - last 10 years



#### Inquiries

For further information about data in this bulletin, contact:

Road Safety Research and Statistics  
Australian Transport Safety Bureau  
PO Box 967,  
Civic Square, ACT 2608  
Email: [research@atsb.gov.au](mailto:research@atsb.gov.au)  
Internet: [www.atsb.gov.au](http://www.atsb.gov.au)

#### Data Sources

The data presented here are obtained from the following sources:

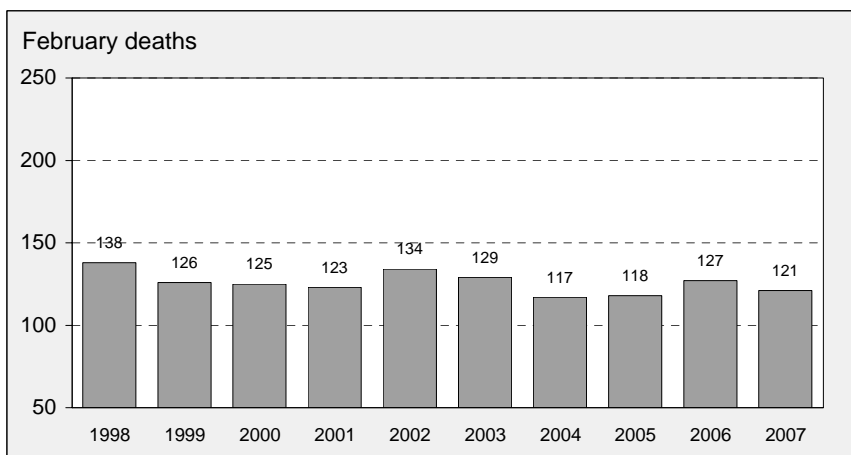
- Roads and Traffic Authority, NSW
- Vicroads
- Queensland Transport
- Department for Transport, Energy and Infrastructure, South Australia
- Western Australia Police
- Department of Infrastructure, Energy and Resources, Tasmania
- Department of Planning and Infrastructure, Northern Territory
- Territory and Municipal Services, ACT

#### Note

Road death statistics for recent months are preliminary and subject to revision. They include any deaths occurring within 30 days of a crash stemming from injuries received in the crash.

The Australian Transport Safety Bureau is an operationally independent body within the Australian Government Department of Transport and Regional Services.

### Australian road deaths for February - last 10 years



### This month's key figures

There were a total of 121 road deaths in February 2007.  
- this is a 4.7% decrease from the February 2006 figure.

There have been 254 road deaths in 2007 to the end of February.  
- this is a 9.9% decrease from the same 2 month period in 2006.

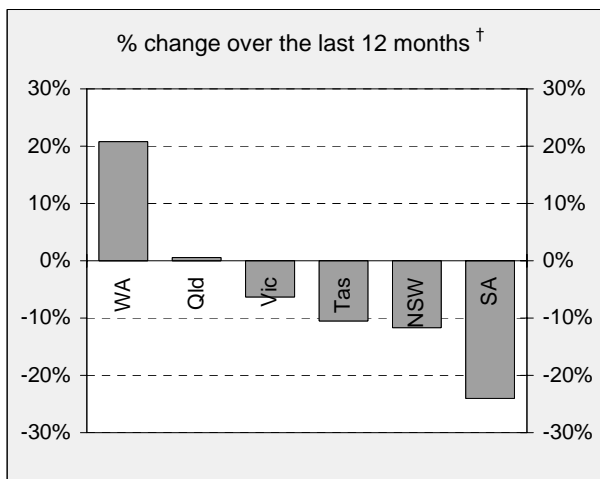
# NUMBER OF ROAD CRASH DEATHS IN EACH STATE / TERRITORY

Road deaths by State/Territory for month, year to date, and twelve months - period ended February 2007 and period ended February 2006

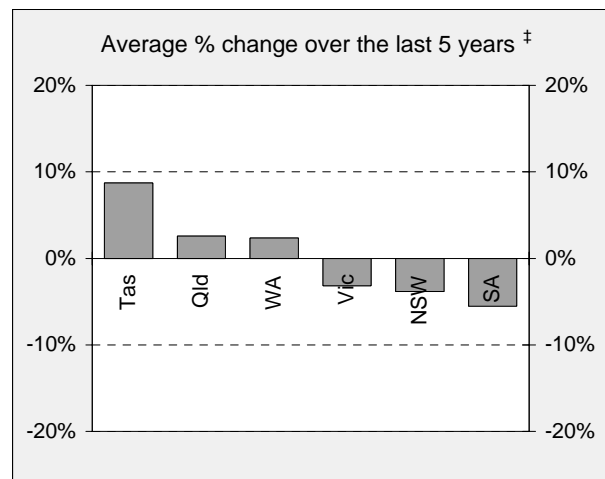
	NSW	Vic	Qld	SA	WA	Tas	NT	ACT	Australia
<b>Current month</b>									
Feb 2007	30	25	35	9	14	4	3	1	121
Feb 2006	39	37	20	8	12	7	2	2	127
% change	<b>-23.1</b>	<b>-32.4</b>	<b>75.0</b>	<b>12.5</b>	<b>16.7</b>	<b>-42.9</b>	<b>50.0</b>	<b>-50.0</b>	<b>-4.7</b>
<b>Year to date</b>									
Jan 2007 - Feb 2007	65	49	56	21	45	9	8	1	254
Jan 2006 - Feb 2006	96	61	49	21	38	12	3	2	282
% change	<b>-32.3</b>	<b>-19.7</b>	<b>14.3</b>	<b>0.0</b>	<b>18.4</b>	<b>-25.0</b>	<b>166.7</b>	<b>-50.0</b>	<b>-9.9</b>
<b>12-months to date</b>									
Mar 2006 - Feb 2007	469	325	343	117	209	51	47	12	1,573
Mar 2005 - Feb 2006	531	347	341	154	173	57	52	25	1,680
Difference	-62	-22	2	-37	36	-6	-5	-13	-107
% change	<b>-11.7</b>	<b>-6.3</b>	<b>0.6</b>	<b>-24.0</b>	<b>20.8</b>	<b>-10.5</b>	<b>-9.6</b>	<b>-52.0</b>	<b>-6.4</b>
<b>Average annual % change over 5 years<sup>a</sup></b>									
Mar 2002 to Feb 2007	<b>-3.8</b>	<b>-3.2</b>	<b>2.6</b>	<b>-5.5</b>	<b>2.3</b>	<b>8.7</b>	<b>-4.0</b>	<b>7.9</b>	<b>-1.4</b>

<sup>a</sup> Average annual percentage change based on the exponential trend for the last five 12 -month periods

## Percentage change in deaths in each State



<sup>†</sup> Percentage change between the 12-month periods of Mar 2005 - Feb 2006 and Mar 2006 - Feb 2007



<sup>‡</sup> Average annual percentage change based on the exponential trend for the last five 12-month periods

# NUMBER OF DEATHS IN EACH ROAD USER GROUP

Road deaths by road user group and gender for twelve months ended February 2007 and twelve months ended February 2006

	Drivers	Passengers	Pedestrians	Motor-cyclists <sup>a</sup>	Cyclists	All road users <sup>b</sup>
<b>Males</b>						
Mar 2006 - Feb 2007	597	184	147	221	36	1,185
Mar 2005 - Feb 2006	601	190	149	229	29	1,200
% change	-0.7	-3.2	-1.3	-3.5	24.1	-1.3
<b>Females</b>						
Mar 2006 - Feb 2007	165	125	73	12	6	381
Mar 2005 - Feb 2006	191	181	89	10	7	478
% change	-13.6	-30.9	-18.0	20.0	-14.3	-20.3
<b>Persons<sup>c</sup></b>						
Mar 2006 - Feb 2007	765	312	221	233	42	1,573
Mar 2005 - Feb 2006	792	373	238	239	36	1,680
% change	-3.4	-16.4	-7.1	-2.5	16.7	-6.4
<b>Average annual % change over 5 years<sup>d</sup></b>						
Mar 2002 to Feb 2007	-0.2	-7.4	-1.0	3.6	6.2	-1.4

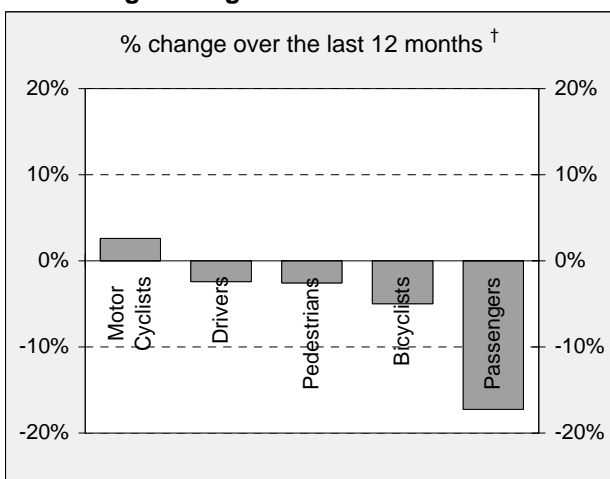
a Includes pillion passengers

b Includes road users not separately specified

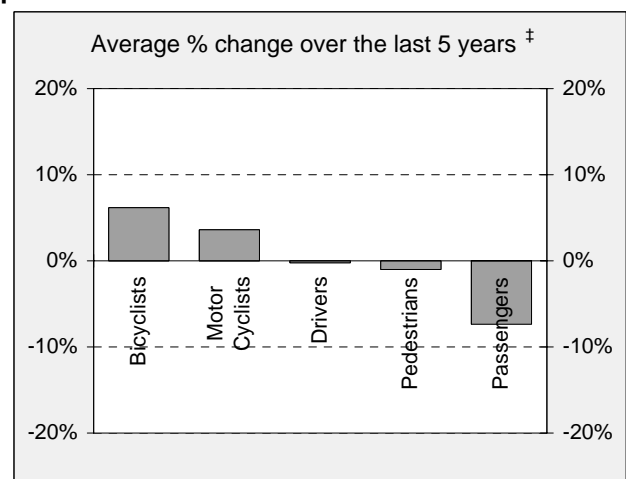
c Includes road users with unstated gender

d Average annual percentage change based on the exponential trend for the last five 12-month period.

## Percentage change in deaths in each road user group



† Percentage change between the 12-month periods of Mar 2005 - Feb 2006 and Mar 2006 - Feb 2007

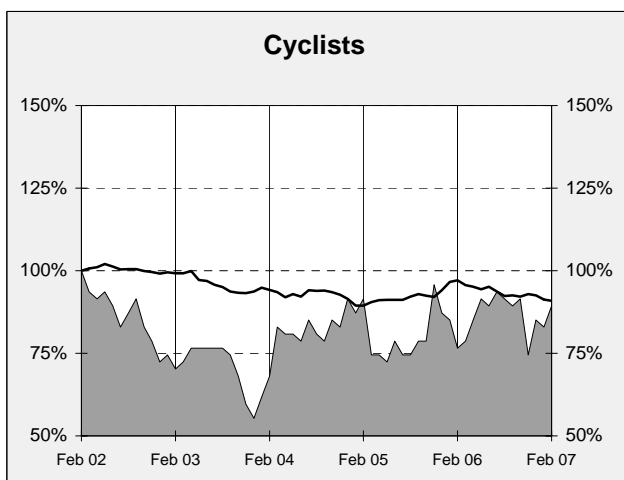
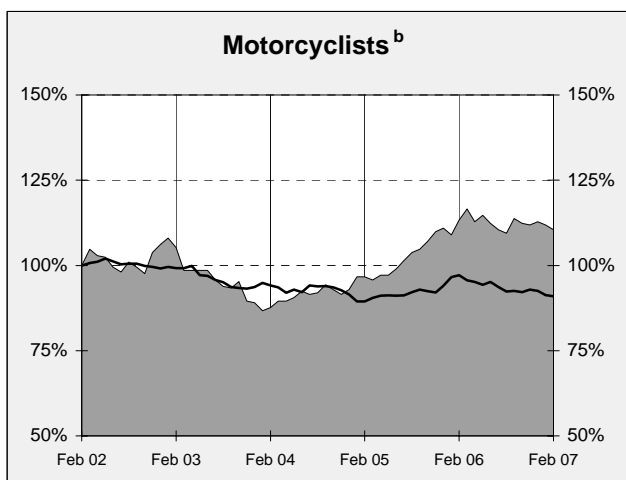
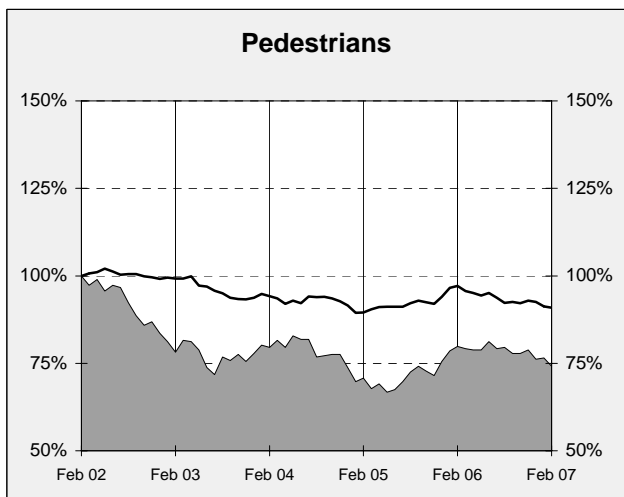
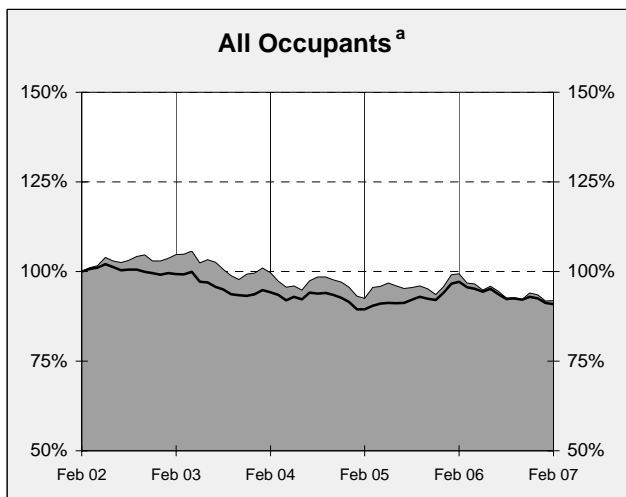
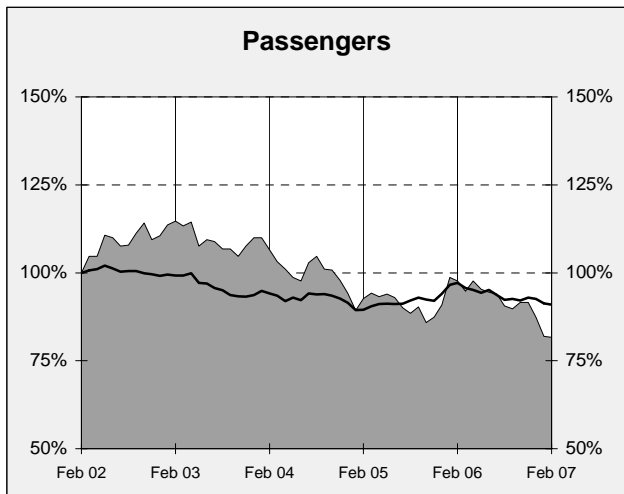
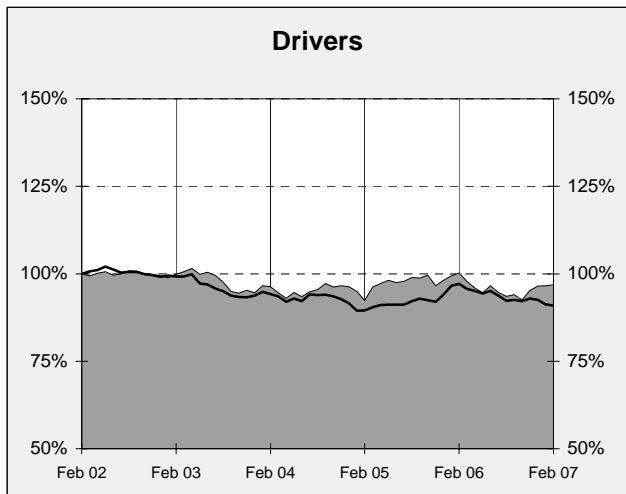
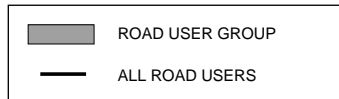


‡ Average annual percentage change based on the exponential trend for the last five 12-month periods

# DEATHS IN EACH ROAD USER GROUP - TRENDS

## Annual deaths in each road user group - last 6 years

The number shown at each month represents the number of deaths in the preceding 12 months expressed as a percentage of the number of deaths in the 12 months to February 2002.



*a* Comprises drivers and passengers

*b* Includes pillion passengers

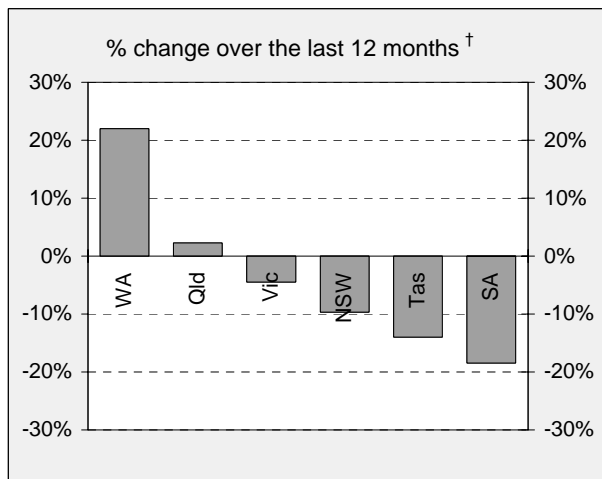
## NUMBER OF FATAL ROAD CRASHES IN EACH STATE / TERRITORY

Fatal crashes by State/Territory for month, year to date and twelve month-period ended February 2007 and period ended February 2006

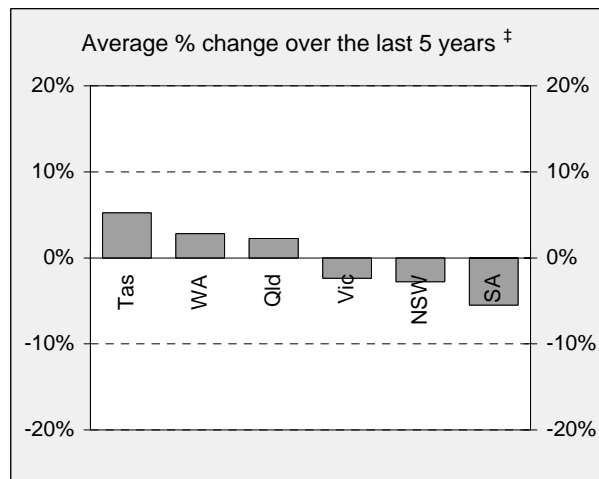
	NSW	Vic	Qld	SA	WA	Tas	NT	ACT	Australia
<b>Current month</b>									
Feb 2007	28	21	31	9	14	4	3	1	111
Feb 2006	38	32	19	7	10	3	2	2	113
% change	-26.3	-34.4	63.2	28.6	40.0	33.3	50.0	-50.0	-1.8
<b>Year to date</b>									
Jan 2007 - Feb 2007	61	44	50	19	43	8	7	1	233
Jan 2006 - Feb 2006	84	53	48	17	32	7	3	2	246
% change	-27.4	-17.0	4.2	11.8	34.4	14.3	133.3	-50.0	-5.3
<b>12 months to date</b>									
Mar 2006 - Feb 2007	430	300	316	106	194	43	43	11	1,443
Mar 2005 - Feb 2006	476	314	309	130	159	50	49	24	1,511
% change	-9.7	-4.5	2.3	-18.5	22.0	-14.0	-12.2	-54.2	-4.5
<b>Average annual % change over 5 years<sup>a</sup></b>									
Mar 2002 to Feb 2007	-3.3	-2.3	3.2	-5.6	4.2	6.2	1.6	11.2	-0.6

a Average annual percentage change based on the exponential trend for the last five 12-month periods

### Percentage change in fatal crashes in each State



† Percentage change between the 12-month periods of Mar 2005 - Feb 2006 and Mar 2006 - Feb 2007



‡ Average annual percentage change based on the exponential trend for the last five 12-month periods

## FATAL CRASHES INVOLVING TRUCKS OR BUSES

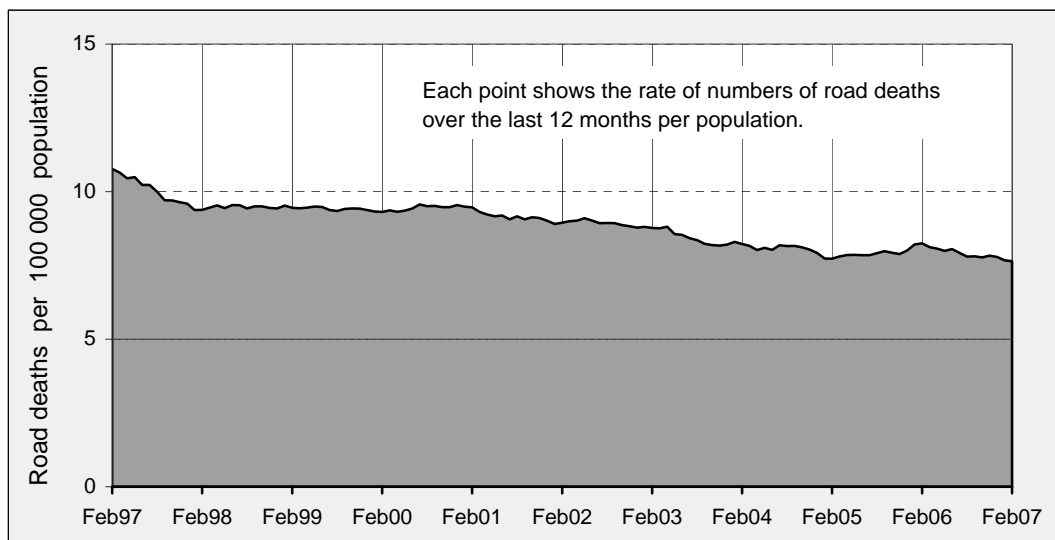
Analysis of fatal crashes involving heavy vehicles will henceforth appear in a separate bulletin on the ATSB website at [www.atsb.gov.au](http://www.atsb.gov.au). The first issue will be in March 2007.

## ROAD DEATH RATES

### Road deaths per 100 000 population

	NSW	Vic	Qld	SA	WA	Tas	NT	ACT	Australia
<b>12-months to date</b>									
Mar 2006 - Feb 2007	6.9	6.5	8.7	7.6	10.4	10.5	23.2	3.7	7.7
Mar 2005 - Feb 2006	7.8	6.9	8.6	10.0	8.6	11.7	25.6	7.7	8.3
<b>Calendar year</b>									
2006	7.4	6.7	8.5	7.6	10.0	11.1	20.7	4.0	7.9
2001	8.0	9.2	8.9	10.1	8.7	12.9	25.3	5.0	8.9

Australian road deaths per year per 100 000 population - moving 12-monthly data



## CHARACTERISTICS OF FATAL CRASHES

Proportion (per cent) of fatal crashes by speed limit, crash type, time of day, and time of week. Two years ended February 2007 and two years ended February 2002

	Speed limit (km/h) <sup>a</sup>			Time of Day	
	Up to 60	65-95	100+	Day	Night <sup>b</sup>
Mar 2005 - Feb 2007	32.1%	22.1%	45.9%	55.0%	45.0%
Mar 2000 - Feb 2002	33.8%	20.6%	45.6%	56.0%	44.0%
	Crash Type			Time of week	
	Pedestrian crash	Other single veh. Crash	Other multiple veh. crash	Week day	Week-end <sup>c</sup>
Mar 2005 - Feb 2007	15.2%	46.2%	38.6%	57.5%	42.5%
Mar 2000 - Feb 2002	18.3%	41.2%	40.5%	60.7%	39.3%

<sup>a</sup> Excludes ACT

<sup>b</sup> 6:00 pm to 5:59 am

<sup>c</sup> 6:00 pm Friday to 5:59 am Monday

# ROAD DEATHS BY AGE, GENDER AND ROAD USER GROUP

## Road deaths by age and gender

	0-16 years	17-20 years	21-25 years	26-39 years	40-59 years	60+ years	All deaths <sup>a</sup>
<b>Males</b>							
Mar 2006 - Feb 2007	65	167	164	322	260	197	1,185
Mar 2005 - Feb 2006	69	158	191	327	262	191	1,200
% change	-5.8	5.7	-14.1	-1.5	-0.8	3.1	-1.3
<b>Females</b>							
Mar 2006 - Feb 2007	37	53	43	61	91	91	381
Mar 2005 - Feb 2006	57	42	52	85	100	141	478
% change	-35.1	26.2	-17.3	-28.2	-9.0	-35.5	-20.3
<b>Persons<sup>b</sup></b>							
Mar 2006 - Feb 2007	107	220	207	384	352	288	1,573
Mar 2005 - Feb 2006	128	200	243	412	362	332	1,680
% change	-16.4	10.0	-14.8	-6.8	-2.8	-13.3	-6.4

a Includes road users with unstated age

b Includes road users with unstated gender

## Road deaths by age for each main road user group

	0-16 years	17-20 years	21-25 years	26-39 years	40-59 years	60+ years	All deaths <sup>a</sup>
<b>Occupants<sup>b</sup></b>							
Mar 2006 - Feb 2007	71	185	149	249	229	187	1,077
Mar 2005 - Feb 2006	88	161	172	273	250	219	1,165
% change	-19.3	14.9	-13.4	-8.8	-8.4	-14.6	-7.6
<b>Motorcyclists<sup>c</sup></b>							
Mar 2006 - Feb 2007	5	20	43	86	65	10	233
Mar 2005 - Feb 2006	4	18	53	88	60	16	239
% change	25.0	11.1	-18.9	-2.3	8.3	-37.5	-2.5
<b>Pedestrians</b>							
Mar 2006 - Feb 2007	24	13	13	40	43	84	221
Mar 2005 - Feb 2006	28	19	17	45	40	88	238
% change	-14.3	-31.6	-23.5	-11.1	7.5	-4.5	-7.1

a Includes road users with unstated age

b Comprises drivers and passengers

c Includes pillion passengers