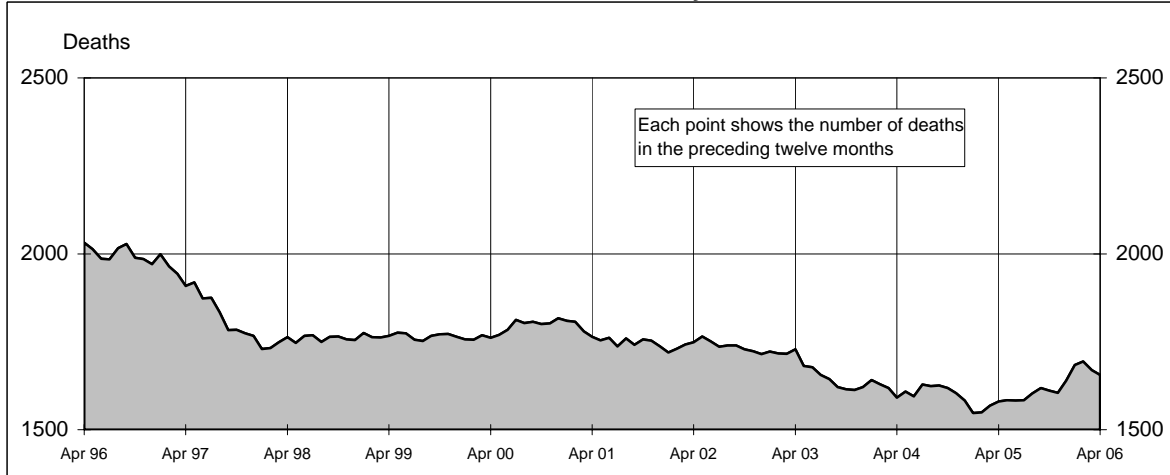
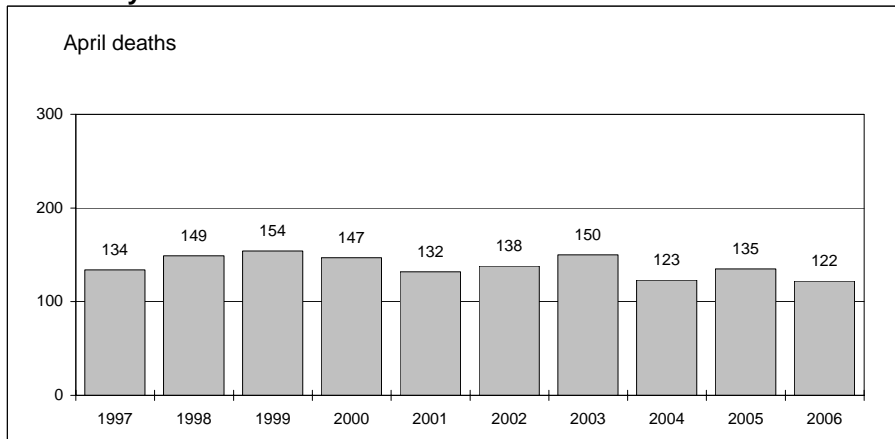




Australian road deaths for 12 months to date - last 10 years



Australian road deaths for April - last 10 years



Inquiries

For further information about data in this bulletin, contact:

The Editor
Transport Safety Statistics Unit
Australian Transport Safety Bureau
PO Box 967,
Civic Square, ACT 2608
Email: stats@atsb.gov.au
Internet: www.atsb.gov.au

Data Sources

The data presented here are obtained from the following sources:

Roads and Traffic Authority, NSW
Vicroads
Queensland Transport
South Australian Police Department
Western Australian Police Service
Department of Infrastructure, Energy and Resources, Tasmania
Northern Territory Police,
Fire & Emergency Services
Department of Urban Services, ACT

Note

Road death statistics for recent months are preliminary and subject to revision. They include any deaths occurring within 30 days of a crash stemming from injuries received in the crash.

© Australian Government

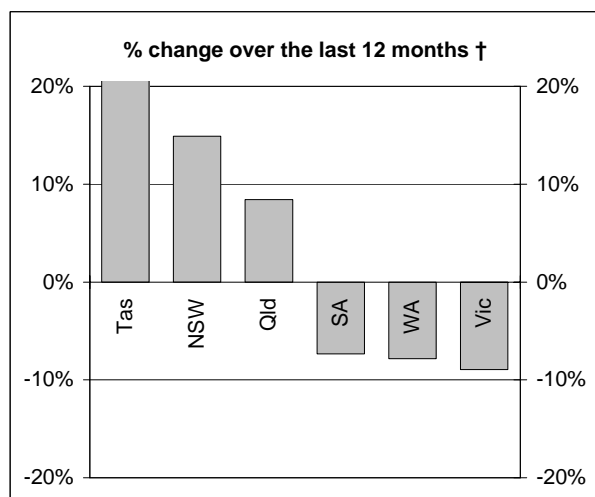
This month's key figures

The total number of road deaths in April 2006 was 122
- this is a 9.6% decrease from the April 2005 figure.

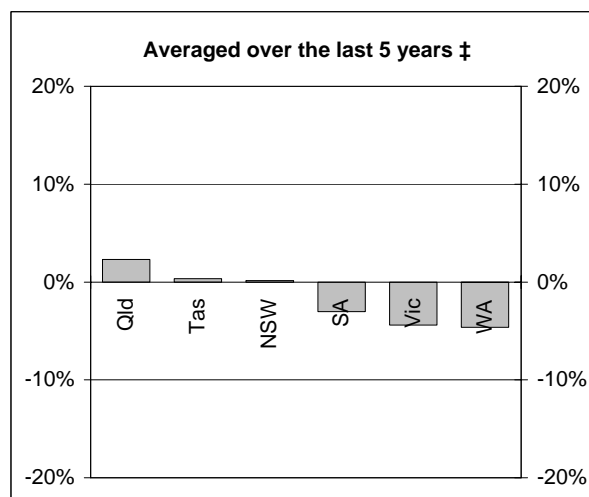
The number of road deaths in 2006 to the end of April is 540
- this is a 3.3% increase over the same 4 month period in 2005.

NUMBER OF ROAD CRASH DEATHS

Percentage change in road deaths in each State



† Percentage change between the 12-month periods of May 2004 - Apr 2005 and May 2005 - Apr 2006



‡ Average annual percentage change over each of the 12-month periods from May 2000 - Apr 2001 to May 2005 - Apr 2006

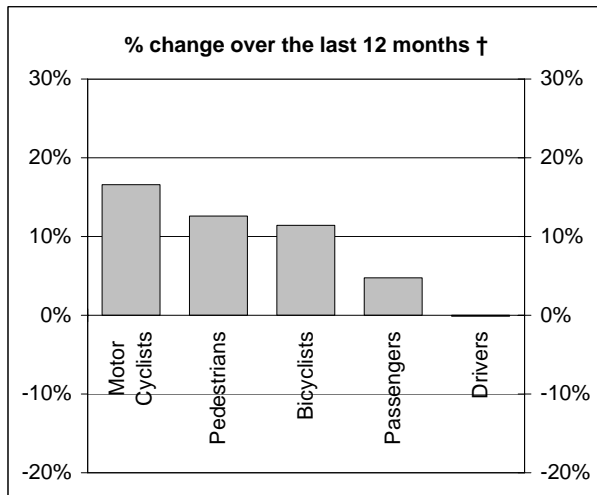
Road deaths by State/Territory for month, year to date, and twelve months - period ended April 2006 and period ended April 2005

	NSW	Vic	Qld	SA	WA	Tas	NT	ACT	Australia
Current month									
Apr 2006	48	21	26	10	12	0	5	0	122
Apr 2005	46	21	32	10	18	0	4	4	135
% change	4.3	0.0	-18.8	0.0	-33.3	-	25.0	-100.0	-9.6
Year to date									
Jan 2006 - Apr 2006	201	107	100	43	62	15	10	2	540
Jan 2005 - Apr 2005	158	129	94	52	60	8	14	8	523
% change	27.2	-17.1	6.4	-17.3	3.3	87.5	-28.6	-75.0	3.3
12-months to date									
May 2005 - Apr 2006	563	326	335	139	165	57	51	20	1656
May 2004 - Apr 2005	490	358	309	150	179	43	38	13	1580
Difference	73	-32	26	-11	-14	14	13	7	76
% change	14.9	-8.9	8.4	-7.3	-7.8	32.6	34.2	53.8	4.8
Ave annual % change (a)									
Apr 2001 to Apr 2006	0.1	-4.4	2.3	-3.0	-4.6	0.4	-0.4	1.0	-1.3

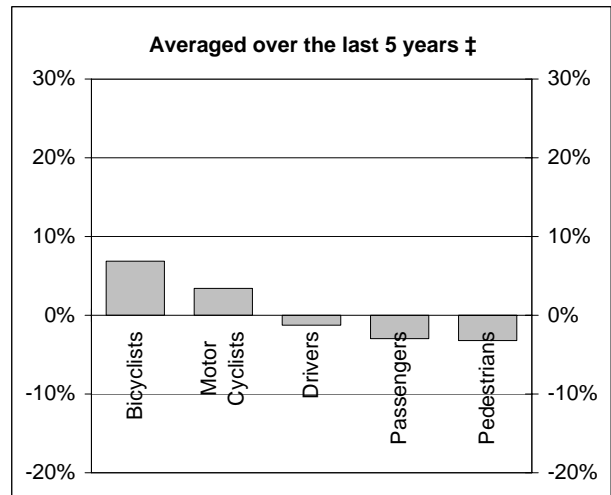
(a) This represents the average annual exponential change between the annual count of 5 years ago and the current annual count

DEATHS IN EACH ROAD USER GROUP

Percentage change in deaths in each road user group



† Percentage change between the 12-month periods of May 2004 - Apr 2005 and May 2005 - Apr 2006



‡ Average annual percentage change over each of the 12-month periods from May 2000 - Apr 2001 to May 2005 - Apr 2006

Road deaths by road user group and gender for twelve months ended April 2006 and twelve months ended April 2005

	Drivers	Passengers	Pedestrians	Motor cyclists (a)	Bicyclists	All road users (b)
Males						
May 2005 - Apr 2006	587	192	144	228	30	1183
May 2004 - Apr 2005	601	191	133	190	32	1151
% change	-2.3	0.5	8.3	20.0	-6.3	2.8
Females						
May 2005 - Apr 2006	182	175	88	11	9	465
May 2004 - Apr 2005	171	165	73	15	3	429
% change	6.4	6.1	20.5	-26.7	200.0	8.4
Persons (c)						
May 2005 - Apr 2006	771	373	232	239	39	1656
May 2004 - Apr 2005	772	356	206	205	35	1580
% change	-0.1	4.8	12.6	16.6	11.4	4.8
Ave annual % change (d)						
Apr 2001 to Apr 2006	-1.2	-3.0	-3.2	3.4	6.9	-1.3

(a) Includes pillion passengers

(b) Includes road users not separately specified

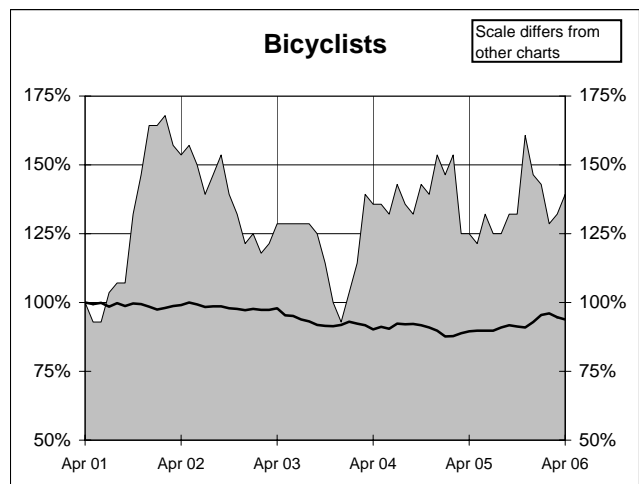
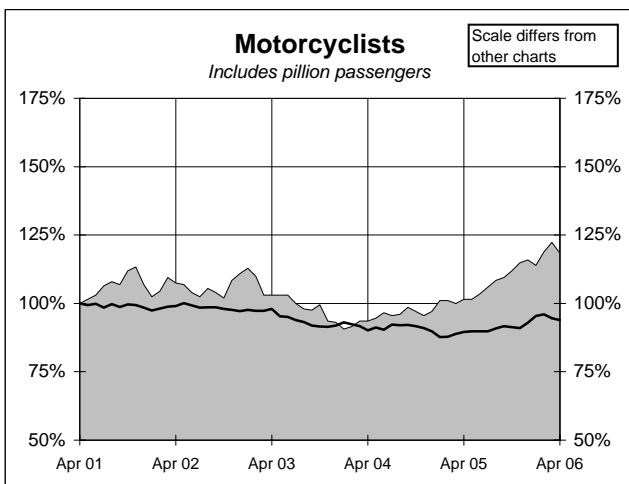
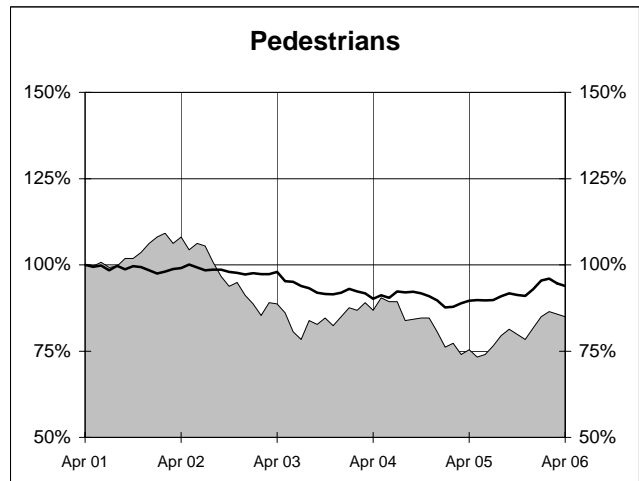
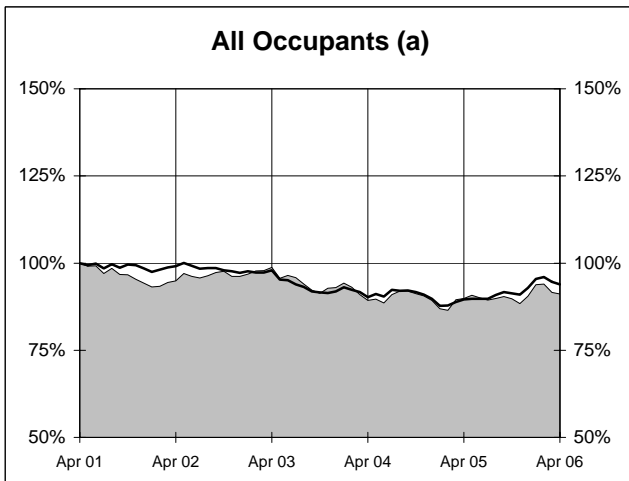
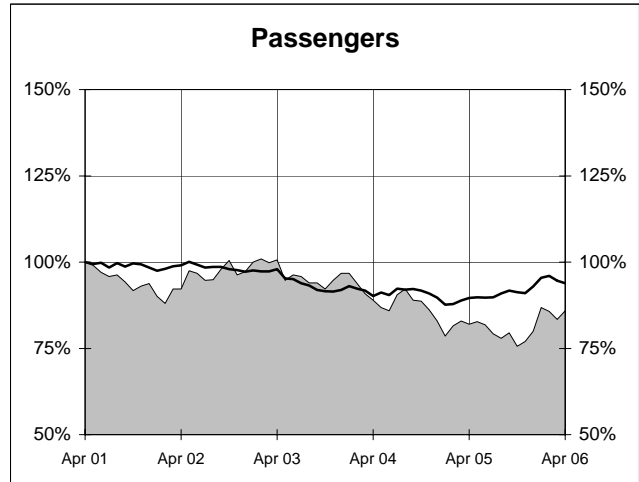
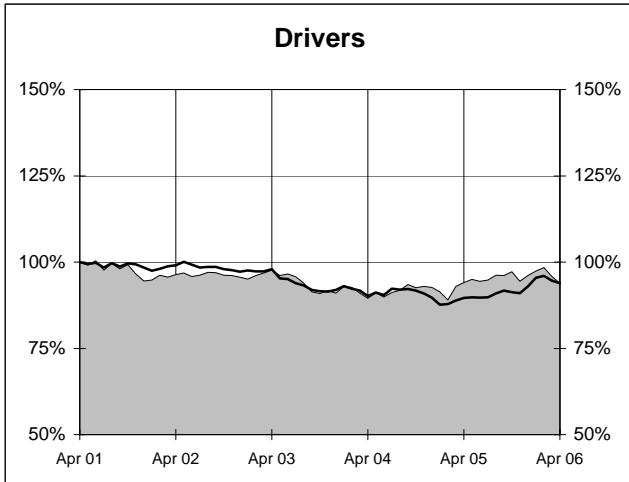
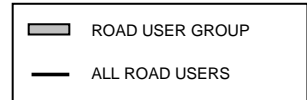
(c) Includes road users with unstated gender

(d) This represents the average annual exponential change between the annual count of 5 years ago and the current annual count

DEATHS IN EACH ROAD USER GROUP - TRENDS

Annual deaths in each road user group - last 5 years

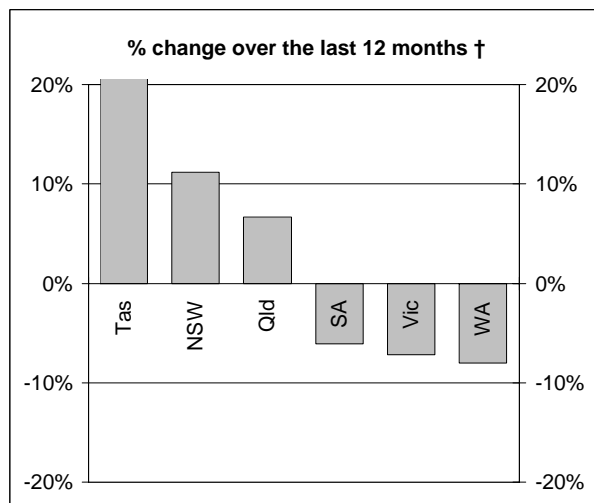
The number shown at each month represents the number of deaths in the preceding 12 months expressed as a percentage of the number of deaths in the 12 months to April 2001.



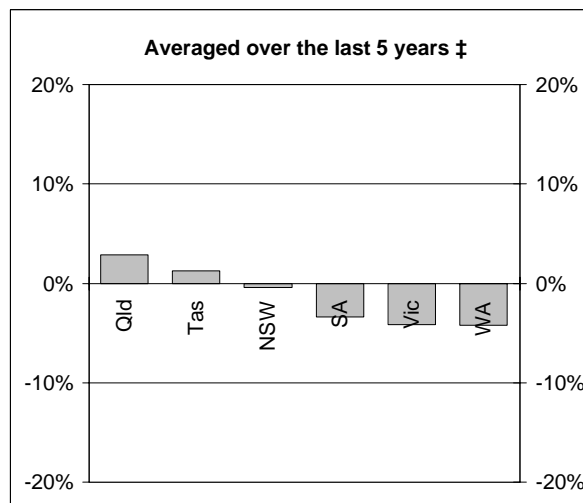
(a) Includes drivers and passengers

NUMBER OF FATAL ROAD CRASHES

Percentage change in fatal crashes in each State



† Percentage change between the 12-month periods of May 2004 - Apr 2005 and May 2005 - Apr 2006



‡ Average annual percentage change over each of the 12-month periods from May 2000 - Apr 2001 to May 2005 - Apr 2006

Fatal crashes by State/Territory for month, year to date and twelve months - period ended April 2006 and period ended April 2005

	NSW	Vic	Qld	SA	WA	Tas	NT	ACT	Australia
Current month									
Apr 2006	39	19	21	10	10	0	5	0	104
Apr 2005	45	21	27	9	17	0	4	4	127
% change	-13.3	-9.5	-22.2	11.1	-41.2	-	25.0	-100.0	-18.1
Year to date									
Jan 2006 - Apr 2006	175	96	93	39	53	10	10	2	478
Jan 2005 - Apr 2005	148	115	85	43	55	8	12	8	474
% change	18.2	-16.5	9.4	-9.3	-3.6	25.0	-16.7	-75.0	0.8
12 months to date									
May 2005 - Apr 2006	498	297	303	123	149	50	49	19	1488
May 2004 - Apr 2005	448	320	284	131	162	40	35	13	1433
% change	11.2	-7.2	6.7	-6.1	-8.0	25.0	40.0	46.2	3.8
Ave annual % change (a)									
Apr 2001 to Apr 2006	-0.4	-4.1	2.9	-3.4	-4.2	1.2	0.8	1.1	-1.2

(a) This represents the average annual exponential change between the annual count of 5 years ago and the current annual count

FATAL CRASHES INVOLVING TRUCKS AND BUSES

Fatal crashes and deaths involving articulated trucks and buses -
twelve months ended April 2006 and twelve months ended April 2005

	NSW	Vic	Qld	SA	WA	Tas	NT	ACT	Australia
--	-----	-----	-----	----	----	-----	----	-----	-----------

FATAL CRASHES INVOLVING ARTICULATED TRUCKS

Number of crashes

May 2005 - Apr 2006	56	19	28	15	9	7	2	0	136
May 2004 - Apr 2005	50	28	14	12	13	3	1	0	121
									(+12.4%)

Number of deaths

May 2005 - Apr 2006	70	21	35	15	10	7	2	0	160
May 2004 - Apr 2005	54	31	15	17	14	3	1	0	135
									(+18.5%)

Note: Data on heavy rigid trucks not currently available

FATAL CRASHES INVOLVING BUSES

Number of crashes

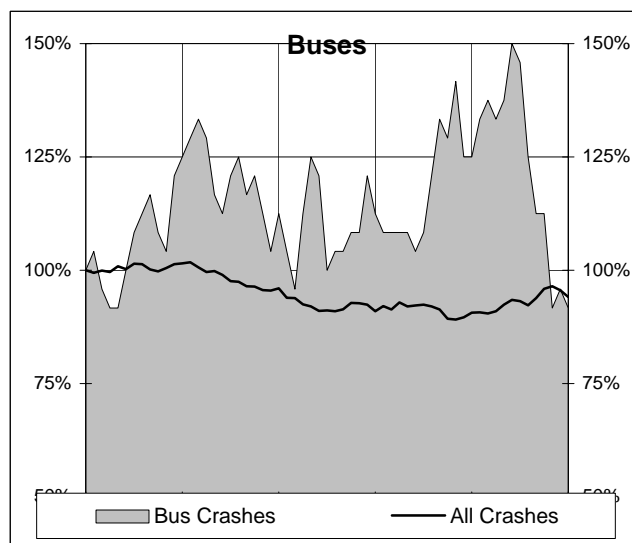
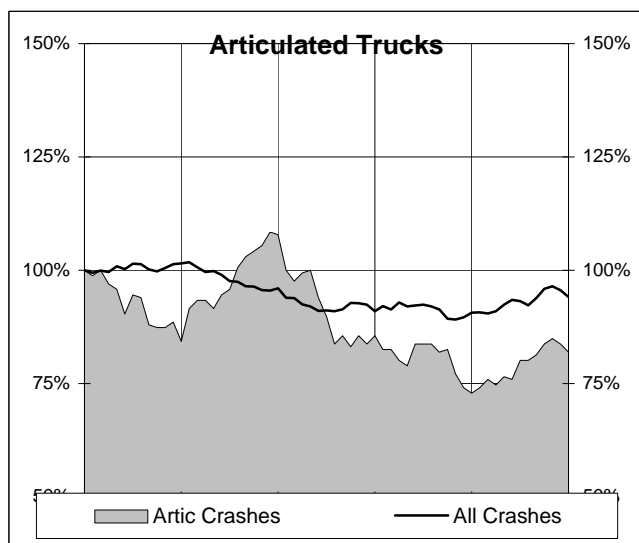
May 2005 - Apr 2006	10	3	9	0	0	0	0	0	22
May 2004 - Apr 2005	19	5	2	3	1	0	0	0	30
									(-26.7%)

Number of deaths

May 2005 - Apr 2006	16	4	11	0	0	0	0	0	31
May 2004 - Apr 2005	19	5	2	3	1	0	0	0	30
									(+3.3%)

Annual count of fatal crashes involving articulated trucks and buses - last 5 years

The number shown at each month represents the number of fatal crashes in the preceding 12 months expressed as a percentage of the number of fatal crashes in the 12 months to April 2001.



CHARACTERISTICS OF FATAL CRASHES

Proportion (per cent) of fatal crashes by speed limit, crash type, time of day, and time of week - two years ended April 2006 and two years ended April 2001

	<i>Speed limit (km/h) (a)</i>			<i>Time of Day</i>	
	<i>Up to 60</i>	<i>65-95</i>	<i>100+</i>	<i>Day time</i>	<i>Night-time (b)</i>
<i>May 2004 - Apr 2006</i>	33.1	21.9	45.0	54.5	45.5
<i>May 1999 - Apr 2001</i>	33.2	21.9	44.9	55.5	44.5

	<i>Crash Type</i>			<i>Time of week</i>	
	<i>Pedestrian crash</i>	<i>Other single veh. crash</i>	<i>Other multiple veh. crash</i>	<i>Week day</i>	<i>Week-end (c)</i>
<i>May 2004 - Apr 2006</i>	14.7	45.6	39.7	57.7	42.3
<i>May 1999 - Apr 2001</i>	18.1	40.4	41.6	60.2	39.8

(a) Excludes ACT

(b) 6:00 pm to 5:59 am

(c) 6:00 pm Friday to 5:59 am Monday