



Australian Government
Australian Transport Safety Bureau

ISSN 1449-1168

Road Deaths

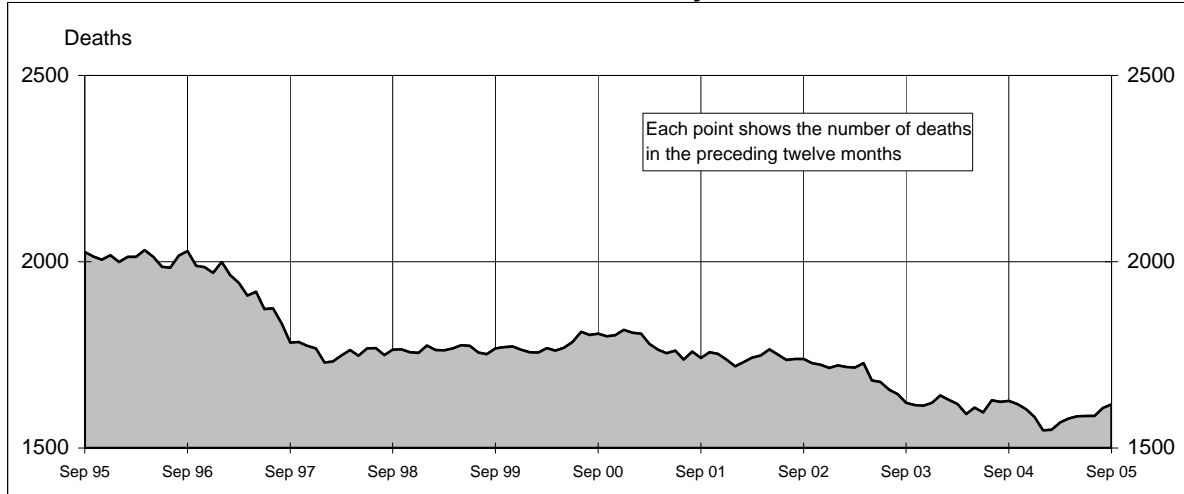
AUSTRALIA



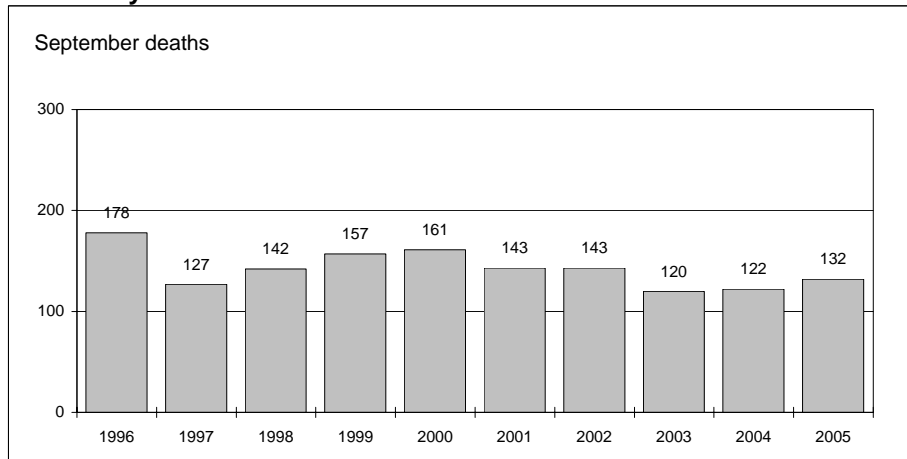
Monthly Bulletin

September 2005

Australian road deaths for 12 months to date - last 10 years



Australian road deaths for September - last 10 years



Inquiries

For further information about data in this bulletin, contact:

The Editor
 Transport Safety Statistics Unit
 Australian Transport Safety Bureau
 PO Box 967,
 Civic Square, ACT 2608

Email: stats@atsb.gov.au
 Internet: www.atsb.gov.au

Data Sources

The data presented here are obtained from the following sources:

- Roads and Traffic Authority, NSW
- Vicroads
- Queensland Transport
- South Australian Police Department
- Western Australian Police Service
- Department of Infrastructure, Energy and Resources, Tasmania
- Northern Territory Police, Fire & Emergency Services
- Department of Urban Services, ACT

Note

Road death statistics for recent months are preliminary and subject to revision. They include any deaths occurring within 30 days of a crash stemming from injuries received in the crash.

© Australian Government

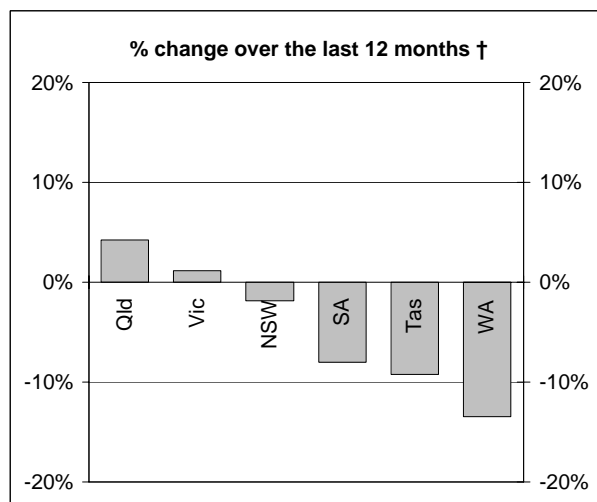
This month's key figures

The total number of road deaths in September 2005 was 132 - this is a 8.2% increase over the September 2004 figure.

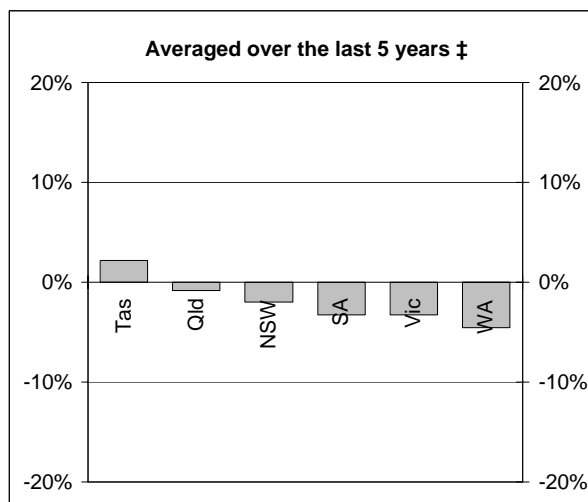
The number of road deaths in 2005 to the end of September is 1,221 - this is a 2.9% increase over the same 9 month period in 2004.

NUMBER OF ROAD CRASH DEATHS

Percentage change in road deaths in each State



† Percentage change between the 12-month periods of Oct 2003 - Sep 2004 and Oct 2004 - Sep 2005



‡ Average annual percentage change over each of the 12-month periods from Oct 1999 - Sep 2000 to Oct 2004 - Sep 2005

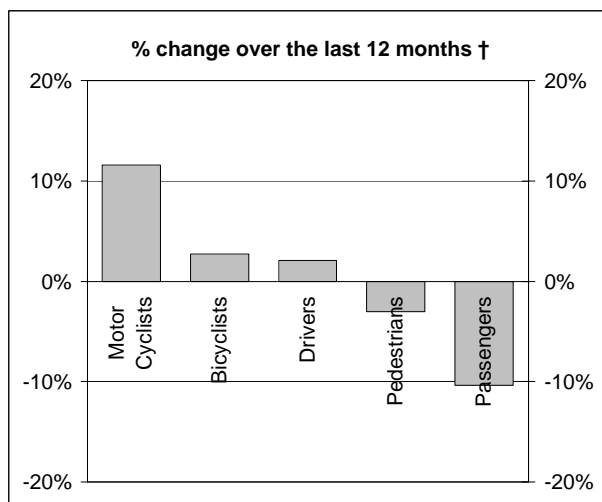
Road deaths by State/Territory for month, year to date, and twelve months - period ended September 2005 and period ended September 2004

	NSW	Vic	Qld	SA	WA	Tas	NT	ACT	Australia
Current month									
Sep 2005	47	28	24	6	11	5	8	3	132
Sep 2004	35	22	21	11	21	7	4	1	122
% change	34.3	27.3	14.3	-45.5	-47.6	-28.6	100.0	200.0	8.2
Year to date									
Jan 2005 - Sep 2005	401	266	231	107	119	34	42	21	1221
Jan 2004 - Sep 2004	380	263	224	108	136	43	26	7	1187
% change	5.5	1.1	3.1	-0.9	-12.5	-20.9	61.5	200.0	2.9
12-months to date									
Oct 2004 - Sep 2005	531	346	318	138	161	49	51	23	1617
Oct 2003 - Sep 2004	541	342	305	150	186	54	37	11	1626
Difference	-10	4	13	-12	-25	-5	14	12	-9
% change	-1.8	1.2	4.3	-8.0	-13.4	-9.3	37.8	109.1	-0.6
Ave annual % change (a)									
Sep 2000 to Sep 2005	-2.0	-3.3	-0.9	-3.3	-4.5	2.2	0.8	3.9	-2.2

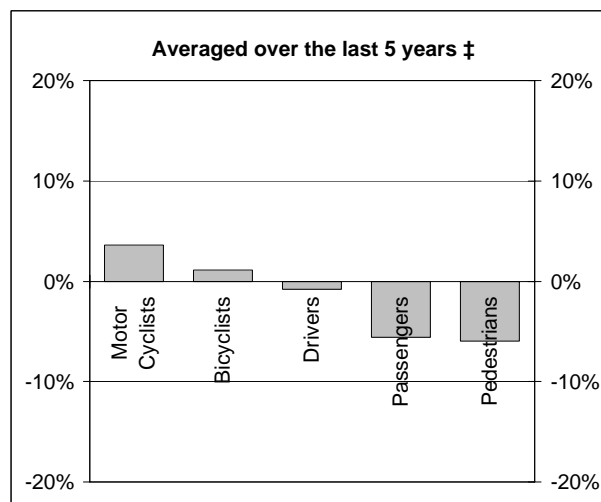
(a) This represents the average annual exponential change between the annual count of 5 years ago and the current annual count

DEATHS IN EACH ROAD USER GROUP

Percentage change in deaths in each road user group



† Percentage change between the 12-month periods of Oct 2003 - Sep 2004 and Oct 2004 - Sep 2005



‡ Average annual percentage change over each of the 12-month periods from Oct 1999 - Sep 2000 to Oct 2004 - Sep 2005

Road deaths by road user group and gender for twelve months ended September 2005 and twelve months ended September 2004

	Drivers	Passengers	Pedestrians	Motor cyclists (a)	Bicyclists	All road users (b)
Males						
Oct 2004 - Sep 2005	608	182	136	209	32	1170
Oct 2003 - Sep 2004	585	191	160	183	32	1155
% change	3.9	-4.7	-15.0	14.2	0.0	1.3
Females						
Oct 2004 - Sep 2005	176	164	87	13	5	446
Oct 2003 - Sep 2004	183	195	70	16	5	471
% change	-3.8	-15.9	24.3	-18.8	0.0	-5.3
Persons (c)						
Oct 2004 - Sep 2005	784	346	223	222	38	1617
Oct 2003 - Sep 2004	768	386	230	199	37	1626
% change	2.1	-10.4	-3.0	11.6	2.7	-0.6
Ave annual % change (d)						
Sep 2000 to Sep 2005	-0.8	-5.6	-5.9	3.6	1.1	-2.2

(a) Includes pillion passengers

(b) Includes road users not separately specified

(c) Includes road users with unstated gender

(d) This represents the average annual exponential change between the annual count of 5 years ago and the current annual count

DEATHS IN EACH ROAD USER GROUP - QUARTERLY REPORT

Road deaths by road user group and State/Territory for twelve months ended September 2005 and twelve months ended September 2004

	NSW	Vic	Qld	SA	WA	Tas	NT	ACT	Australia
Drivers									
Oct 2004 - Sep 2005	262	173	145	70	83	23	22	6	784
Oct 2003 - Sep 2004	243	164	142	78	91	28	15	7	768
% change	7.8	5.5	2.1	-10.3	-8.8	-17.9	46.7	-	2.1
<i>Ave annual % change (a)</i>									
Sep 2000 to Sep 2005	0.1	-2.9	0.1	-2.4	-0.7	2.8	5.3	-	-0.8
Passengers									
Oct 2004 - Sep 2005	95	84	62	34	36	14	17	4	346
Oct 2003 - Sep 2004	137	74	74	30	48	14	8	1	386
% change	-30.7	13.5	-16.2	13.3	-25.0	0.0	112.5	-	-10.4
<i>Ave annual % change (a)</i>									
Sep 2000 to Sep 2005	-8.2	0.2	-7.6	-4.6	-10.6	1.5	1.2	-	-5.6
Pedestrians									
Oct 2004 - Sep 2005	98	44	37	14	19	1	6	4	223
Oct 2003 - Sep 2004	87	53	39	13	19	5	11	3	230
% change	12.6	-17.0	-5.1	7.7	0.0	-80.0	-45.5	-	-3.0
<i>Ave annual % change (a)</i>									
Sep 2000 to Sep 2005	-3.3	-9.4	-5.5	-4.9	-8.7	-34.0	0.0	-	-5.9
Motor cyclists (b)									
Oct 2004 - Sep 2005	64	39	69	17	17	7	1	8	222
Oct 2003 - Sep 2004	60	42	40	23	28	6	0	0	199
% change	6.7	-7.1	72.5	-26.1	-39.3	16.7	-	-	11.6
<i>Ave annual % change (a)</i>									
Sep 2000 to Sep 2005	2.3	-1.0	12.1	-2.2	-5.0	18.5	-24.2	-	3.6
Bicyclists									
Oct 2004 - Sep 2005	12	6	4	2	6	4	3	1	38
Oct 2003 - Sep 2004	14	8	9	4	0	1	1	0	37
All road users (c)									
Oct 2004 - Sep 2005	531	346	318	138	161	49	51	23	1617
Oct 2003 - Sep 2004	541	342	305	150	186	54	37	11	1626
% change	-1.8	1.2	4.3	-8.0	-13.4	-9.3	37.8	109.1	-0.6
<i>Ave annual % change (a)</i>									
Sep 2000 to Sep 2005	-2.0	-3.3	-0.9	-3.3	-4.5	2.2	0.8	3.9	-2.2

(a) This represents the average annual exponential change between the annual count of 5-years ago and the current annual count

(b) Includes pillion passengers

(c) Includes road users not separately classified

DEATHS IN EACH ROAD USER GROUP - QUARTERLY REPORT

Road deaths by road user group and age for twelve months ended
September 2005 and twelve months ended September 2004

	0-16 years	17-20 years	21-25 years	26-39 years	40-59 years	60+ years	All fatalities(d)
Drivers							
Oct 2004 - Sep 2005	3	106	110	207	193	165	784
Oct 2003 - Sep 2004	9	99	101	192	203	164	768
% change	-66.7	7.1	8.9	7.8	-4.9	0.6	2.1
<i>Ave annual % change (a)</i>							
Sep 2000 to Sep 2005	-19.7	-2.8	1.5	-4.2	1.2	2.9	-0.8
Passengers							
Oct 2004 - Sep 2005	62	61	51	40	53	75	346
Oct 2003 - Sep 2004	83	90	40	50	48	73	386
% change	-25.3	-32.2	27.5	-20.0	10.4	2.7	-10.4
<i>Ave annual % change (a)</i>							
Sep 2000 to Sep 2005	-8.4	-10.1	-1.5	-10.3	2.9	-3.4	-5.6
Pedestrians							
Oct 2004 - Sep 2005	16	19	18	43	40	87	223
Oct 2003 - Sep 2004	24	14	17	43	55	77	230
% change	-33.3	35.7	5.9	0.0	-27.3	13.0	-3.0
<i>Ave annual % change (a)</i>							
Sep 2000 to Sep 2005	-16.7	-9.3	-2.1	-2.2	-5.8	-4.6	-5.9
Motor cyclists (b)							
Oct 2004 - Sep 2005	6	18	42	86	56	14	222
Oct 2003 - Sep 2004	9	17	35	75	54	9	199
% change	-33.3	5.9	20.0	14.7	3.7	55.6	11.6
<i>Ave annual % change (a)</i>							
Sep 2000 to Sep 2005	0.0	3.7	2.0	1.5	5.4	28.5	3.6
Bicyclists							
Oct 2004 - Sep 2005	9	0	2	8	11	7	38
Oct 2003 - Sep 2004	10	2	0	7	12	6	37
All road users (c)							
Oct 2004 - Sep 2005	96	204	224	385	355	348	1617
Oct 2003 - Sep 2004	135	222	194	367	375	329	1626
% change	-28.9	-8.1	15.5	4.9	-5.3	5.8	-0.6
<i>Ave annual % change (a)</i>							
Sep 2000 to Sep 2005	-10.2	-5.8	0.1	-3.5	1.4	-0.2	-2.2

(a) This represents the average annual exponential change between the annual count of 5-years ago and the current annual count

(b) Includes pillion passengers

(c) Includes road users not separately classified

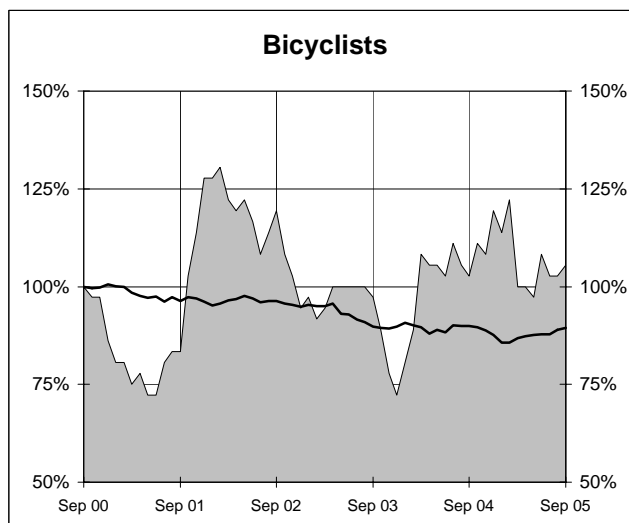
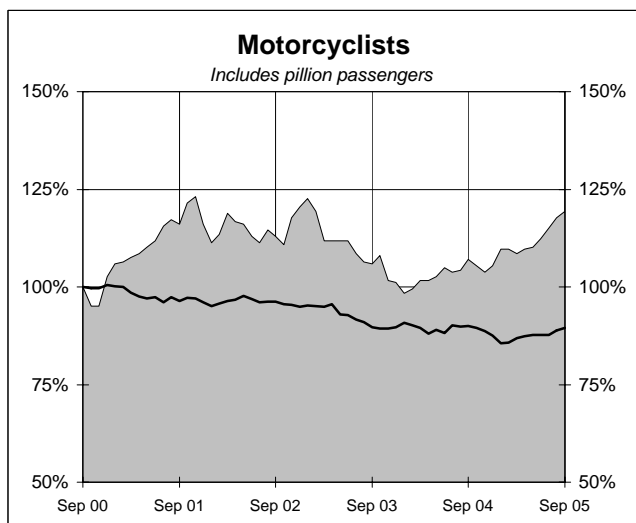
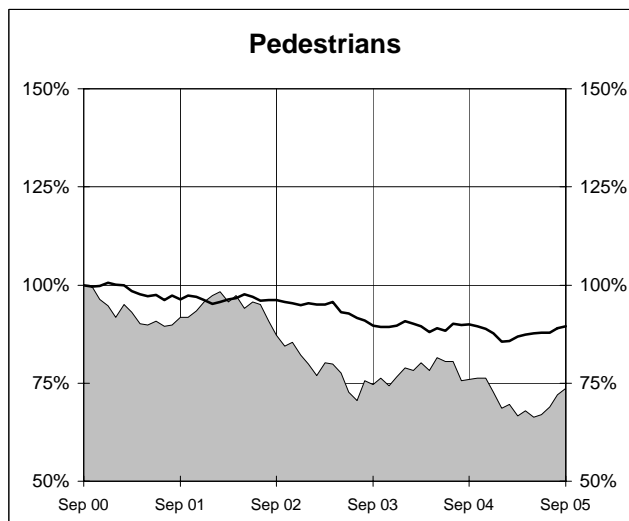
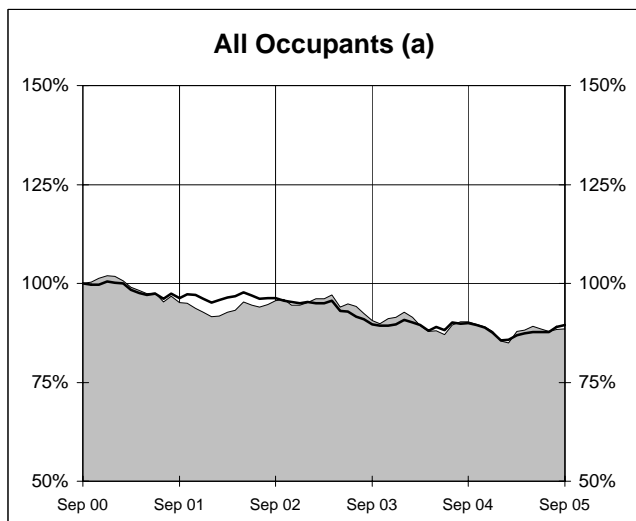
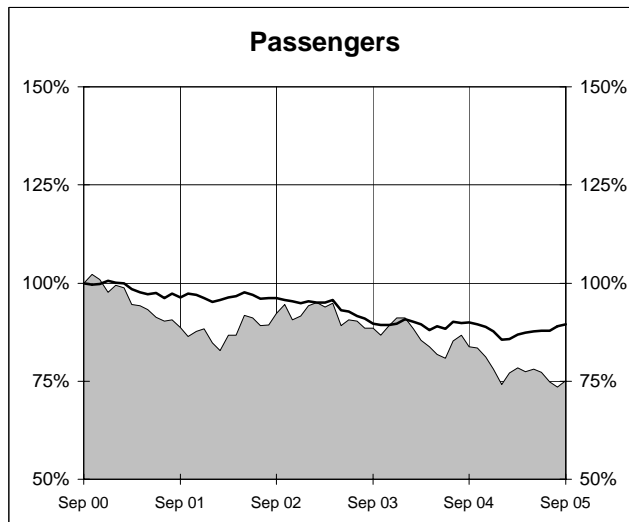
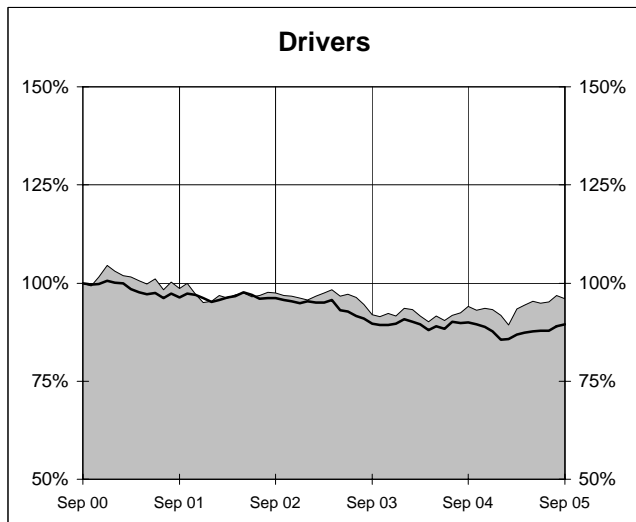
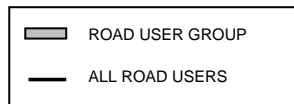
(d) Includes deaths with unstated age

- Percentage change not calculated

DEATHS IN EACH ROAD USER GROUP - TRENDS

Annual deaths in each road user group - last 5 years

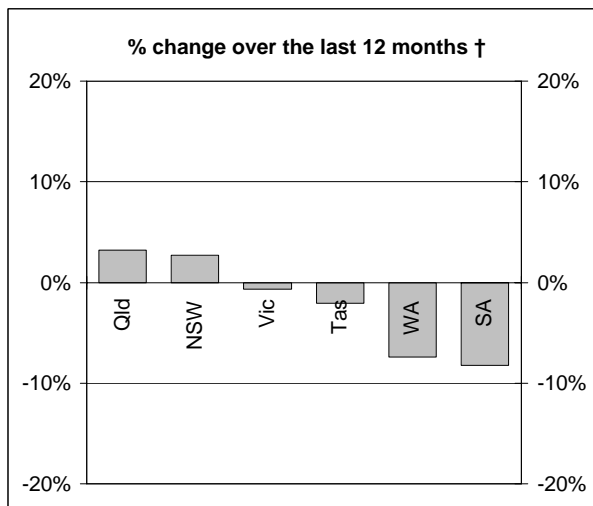
The number shown at each month represents the number of deaths in the preceding 12 months expressed as a percentage of the number of deaths in the 12 months to September 2000.



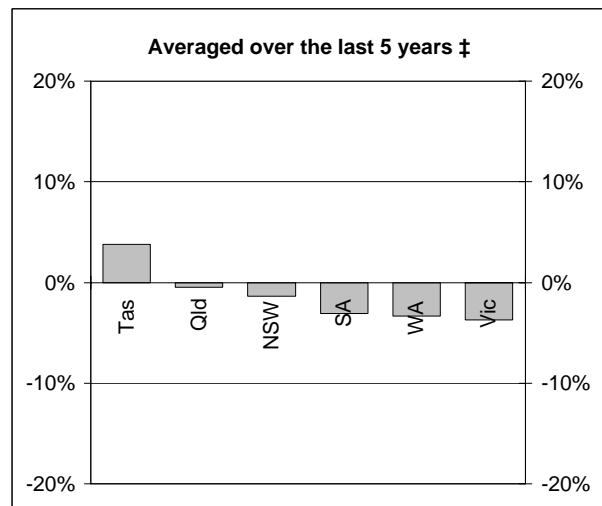
(a) Includes drivers and passengers

NUMBER OF FATAL ROAD CRASHES

Percentage change in fatal crashes in each State



† Percentage change between the 12-month periods of Oct 2003 - Sep 2004 and Oct 2004 - Sep 2005



‡ Average annual percentage change over each of the 12-month periods from Oct 1999 - Sep 2000 to Oct 2004 - Sep 2005

Fatal crashes by State/Territory for month, year to date and twelve months - period ended September 2005 and period ended September 2004

	NSW	Vic	Qld	SA	WA	Tas	NT	ACT	Australia
Current month									
Sep 2005	42	24	22	6	11	4	8	3	120
Sep 2004	33	21	19	10	14	6	4	1	108
% change	27.3	14.3	15.8	-40.0	-21.4	-33.3	100.0	200.0	11.1
Year to date									
Jan 2005 - Sep 2005	368	237	207	92	111	33	39	20	1107
Jan 2004 - Sep 2004	336	240	207	97	123	38	26	7	1074
% change	9.5	-1.3	0.0	-5.2	-9.8	-13.2	50.0	185.7	3.1
12 months to date									
Oct 2004 - Sep 2005	490	309	289	123	150	47	47	22	1477
Oct 2003 - Sep 2004	477	311	280	134	162	48	35	11	1458
% change	2.7	-0.6	3.2	-8.2	-7.4	-2.1	34.3	100.0	1.3
Ave annual % change (a)									
Sep 2000 to Sep 2005	-1.4	-3.7	-0.5	-3.1	-3.4	3.8	1.8	6.6	-1.8

(a) This represents the average annual exponential change between the annual count of 5 years ago and the current annual count

FATAL CRASHES INVOLVING TRUCKS AND BUSES

Fatal crashes and deaths involving articulated trucks and buses -
 twelve months ended September 2005 and twelve months ended September 2004

	NSW	Vic	Qld	SA	WA	Tas	NT	ACT	Australia
--	-----	-----	-----	----	----	-----	----	-----	-----------

FATAL CRASHES INVOLVING ARTICULATED TRUCKS

Number of crashes

Oct 2004 - Sep 2005	52	22	21	8	11	3	0	0	117
Oct 2003 - Sep 2004	53	34	18	9	18	4	1	1	138
									(-15.2%)

Number of deaths

Oct 2004 - Sep 2005	56	25	23	10	13	3	0	0	130
Oct 2003 - Sep 2004	63	35	19	11	21	4	1	1	155
									(-16.1%)

Note: Data on heavy rigid trucks not currently available

FATAL CRASHES INVOLVING BUSES

Number of crashes

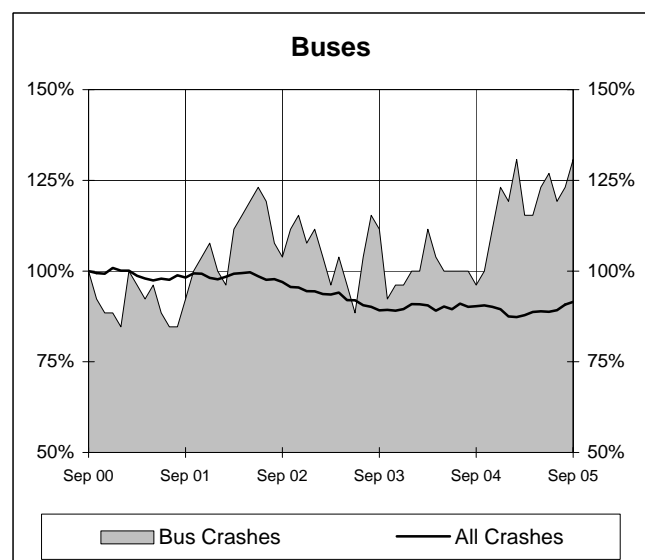
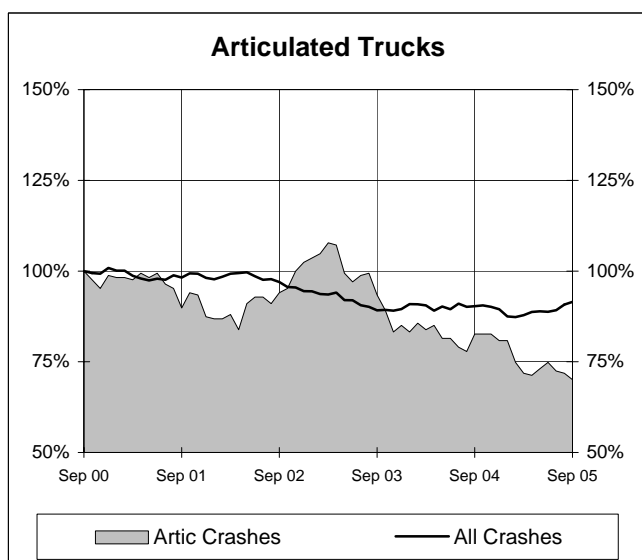
Oct 2004 - Sep 2005	21	4	8	0	1	0	0	0	34
Oct 2003 - Sep 2004	11	4	5	4	0	0	0	1	25
									(+36.0%)

Number of deaths

Oct 2004 - Sep 2005	27	4	10	0	1	0	0	0	42
Oct 2003 - Sep 2004	11	4	5	4	0	0	0	1	25
									(+68.0%)

Annual count of fatal crashes involving articulated trucks and buses - last 5 years

The number shown at each month represents the number of fatal crashes in the preceding 12 months expressed as a percentage of the number of fatal crashes in the 12 months to September 2000.



TIME SERIES - QUARTERLY REPORT

Road deaths by road user group, 1990 to 2004

	<i>Drivers</i>	<i>Passengers</i>	<i>Pedestrians</i>	<i>Motor cyclists (a)</i>	<i>Bicyclists (b)</i>	<i>All road users (c)</i>
1990	935	634	420	262	80	2331
1991	910	554	343	248	58	2113
1992	815	570	350	197	41	1974
1993	859	513	331	203	45	1953
1994	809	501	367	190	59	1928
1995	874	491	398	204	48	2017
1996	869	499	351	193	57	1970
1997	776	431	328	177	52	1767
1998	741	468	318	181	44	1755
1999	820	428	299	176	40	1764
2000	852	450	287	191	31	1817
2001	776	407	290	216	46	1737
2002	785	422	249	224	34	1715
2003	747	420	232	188	26	1621
2004	761	360	220	196	43	1583

(a) Includes pillion passengers.

(b) From 1989, includes pedal cycle passengers.

(c) Includes road users not separately classified.

Road deaths by State/Territory, 1990 to 2004

	<i>NSW</i>	<i>Vic</i>	<i>Qld</i>	<i>SA</i>	<i>WA</i>	<i>Tas</i>	<i>NT</i>	<i>ACT</i>	<i>Australia</i>
1990	797	548	399	226	196	71	68	26	2331
1991	663	503	395	184	207	77	67	17	2113
1992	649	396	416	165	200	74	54	20	1974
1993	581	435	396	218	209	58	44	12	1953
1994	646	377	418	159	211	59	41	17	1928
1995	620	418	456	181	209	57	61	15	2017
1996	581	417	385	181	247	64	72	23	1970
1997	576	377	360	148	197	32	60	17	1767
1998	556	390	279	168	223	48	69	22	1755
1999	577	383	314	151	218	53	49	19	1764
2000	603	407	317	166	212	43	51	18	1817
2001	524	444	324	153	165	61	50	16	1737
2002	561	397	322	154	179	37	55	10	1715
2003	539	330	310	157	180	41	53	11	1621
2004	510	343	311	139	178	58	35	9	1583

DEATH RATES - QUARTERLY REPORT

Road death rates by State/Territory

	<i>NSW</i>	<i>Vic</i>	<i>Qld</i>	<i>SA</i>	<i>WA</i>	<i>Tas</i>	<i>NT</i>	<i>ACT</i>	<i>Australia</i>
Per capita (a)									
2004	7.58	6.90	8.01	9.06	8.98	12.03	17.51	2.78	7.87
1999	9.00	8.17	8.97	10.08	11.79	11.24	25.42	6.08	9.32
Per vehicle (b)									
2004	1.26	0.96	1.17	1.27	1.20	1.66	3.30	0.42	1.17
1999	1.57	1.17	1.36	1.46	1.62	1.61	4.75	0.96	1.44

(a) Annual deaths per 100,000 population: 2004 at June 30 (preliminary data); 1999 at June 30 (revised data) taken from ABS catalogue 3201.0

(b) Annual deaths per 10,000 registered motor vehicles: 2004 at Mar 31; 1999 at Oct 31 taken from ABS catalogue 9309.0.

CHARACTERISTICS OF FATAL CRASHES

Proportion (per cent) of fatal crashes by speed limit, crash type, time of day, and time of week - two years ended September 2005 and two years ended September 2000

	<i>Speed limit (km/h) (a)</i>			<i>Time of Day</i>	
	<i>Up to 60</i>	<i>65-95</i>	<i>100+</i>	<i>Day time</i>	<i>Night-time (b)</i>
<i>Oct 2003 - Sep 2005</i>	31.9	22.3	45.8	54.8	45.2
<i>Oct 1998 - Sep 2000</i>	32.4	22.1	45.4	55.4	44.6

	<i>Crash Type</i>			<i>Time of week</i>	
	<i>Pedestrian crash</i>	<i>Other single veh. crash</i>	<i>Other multiple veh. crash</i>	<i>Week day</i>	<i>Week-end (c)</i>
<i>Oct 2003 - Sep 2005</i>	15.2	44.4	40.4	58.2	41.8
<i>Oct 1998 - Sep 2000</i>	19.3	38.1	42.7	59.7	40.3

(a) Excludes ACT

(b) 6:00 pm to 5:59 am

(c) 6:00 pm Friday to 5:59 am Monday