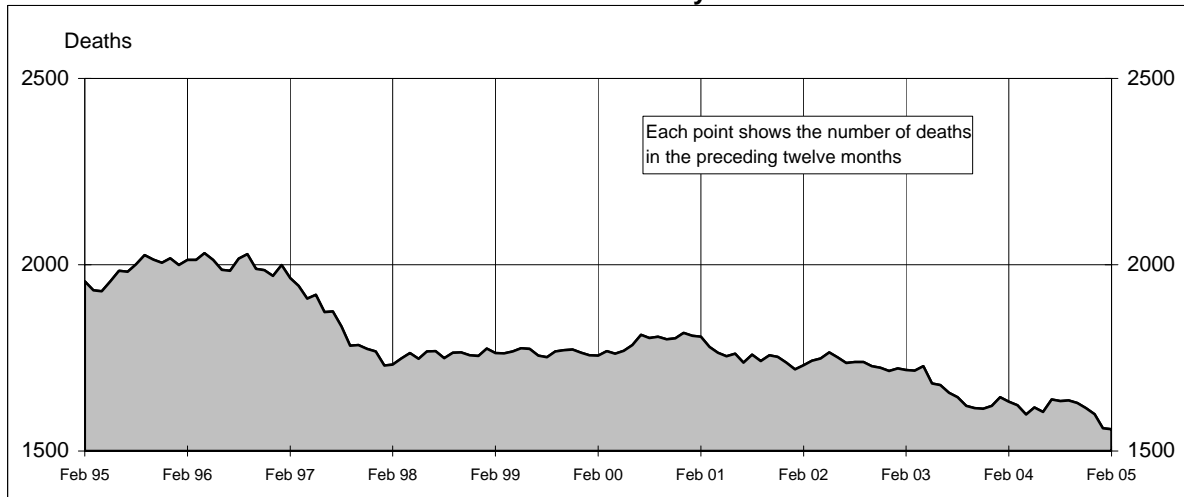
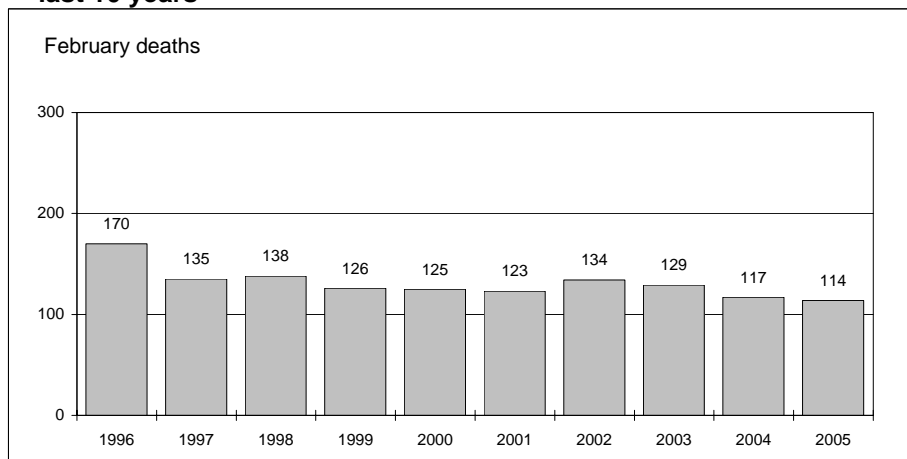




Australian road deaths for 12 months to date - last 10 years



Australian road deaths for February - last 10 years



Inquiries

For further information about data in this bulletin, contact:

The Editor
Transport Safety Statistics Unit
Australian Transport Safety Bureau
PO Box 967,
Civic Square, ACT 2608

Email: stats@atsb.gov.au
Internet: www.atsb.gov.au

Data Sources

The data presented here are obtained from the following sources:

Roads and Traffic Authority, NSW
Vicroads
Queensland Transport
South Australian Police Department
Western Australian Police Service
Department of Infrastructure,
Energy and Resources, Tasmania
Northern Territory Police,
Fire & Emergency Services
Department of Urban Services, ACT

Note

Road death statistics for recent months are preliminary and subject to revision. They include any deaths occurring within 30 days of a crash stemming from injuries received in the crash.

© Australian Government

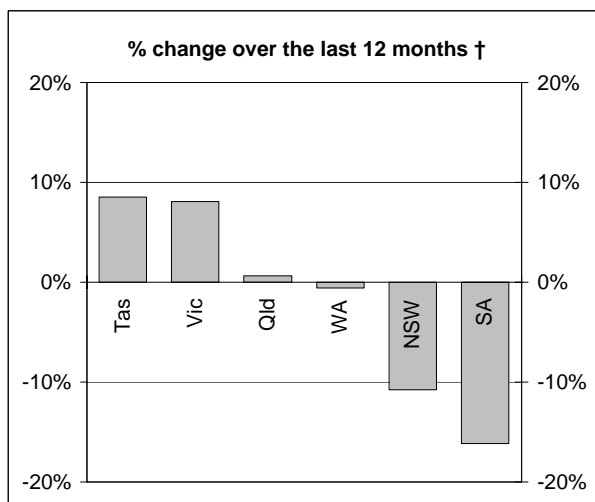
This month's key figures

The total number of road deaths in February 2005 was 114 - this is a 2.6% decrease from the February 2004 figure.

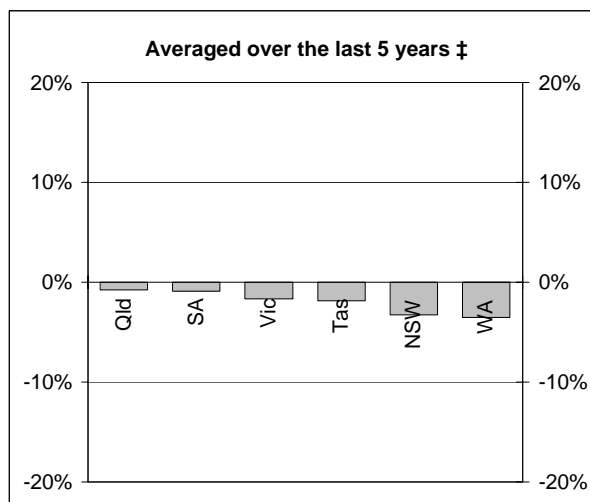
The number of road deaths in 2005 to the end of February is 226 - this is a 15.4% decrease from the same 2 month period in 2004.

NUMBER OF ROAD CRASH DEATHS

Percentage change in road deaths in each State



† Percentage change between the 12-month periods of Mar 2003 - Feb 2004 and Mar 2004 - Feb 2005



‡ Average annual percentage change over each of the 12-month periods from Mar 1999 - Feb 2000 to Mar 2004 - Feb 2005

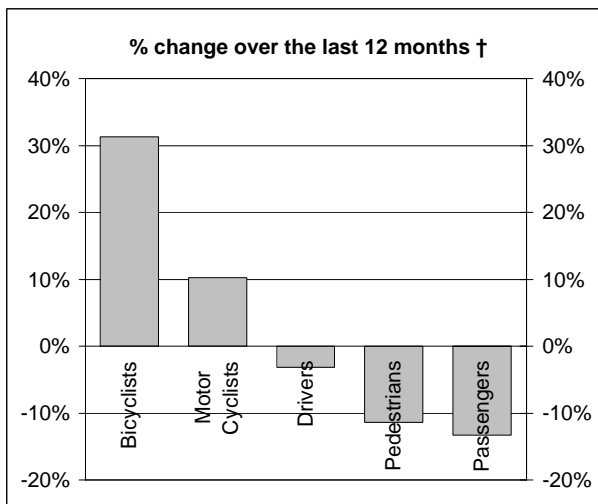
Road deaths by State/Territory for month, year to date, and twelve months - period ended February 2005 and period ended February 2004

	NSW	Vic	Qld	SA	WA	Tas	NT	ACT	Australia
Current month									
Feb 2005	35	26	21	8	16	2	4	2	114
Feb 2004	44	22	12	10	13	10	6	0	117
% change	-20.5	18.2	75.0	-20.0	23.1	-80.0	-33.3	-	-2.6
Year to date									
Jan 2005 - Feb 2005	71	59	38	14	30	6	5	3	226
Jan 2004 - Feb 2004	99	54	38	23	30	13	8	2	267
% change	-28.3	9.3	0.0	-39.1	0.0	-53.8	-37.5	50.0	-15.4
12-months to date									
Mar 2004 - Feb 2005	496	348	312	130	178	51	32	11	1558
Mar 2003 - Feb 2004	556	322	310	155	179	47	53	10	1632
Difference	-60	26	2	-25	-1	4	-21	1	-74
% change	-10.8	8.1	0.6	-16.1	-0.6	8.5	-39.6	10.0	-4.5
Ave annual % change (a)									
Feb 2000 to Feb 2005	-3.3	-1.6	-0.8	-0.9	-3.5	-1.9	-7.4	-7.2	-2.4

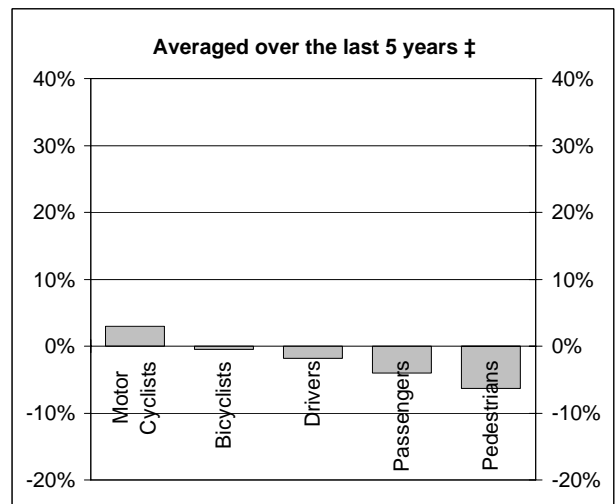
(a) This represents the average annual exponential change between the annual count of 5 years ago and the current annual count

DEATHS IN EACH ROAD USER GROUP

Percentage change in deaths in each road user group



† Percentage change between the 12-month periods of Mar 2003 - Feb 2004 and Mar 2004 - Feb 2005



‡ Average annual percentage change over each of the 12-month periods from Mar 1999 - Feb 2000 to Mar 2004 - Feb 2005

Road deaths by road user group and gender for twelve months ended February 2005 and twelve months ended February 2004

	Drivers	Passengers	Pedestrians	Motor cyclists (a)	Bicyclists	All road users (b)
Males						
Mar 2004 - Feb 2005	576	176	140	189	36	1123
Mar 2003 - Feb 2004	581	217	159	169	28	1160
% change	-0.9	-18.9	-11.9	11.8	28.6	-3.2
Females						
Mar 2004 - Feb 2005	163	177	71	15	6	435
Mar 2003 - Feb 2004	182	189	79	16	4	471
% change	-10.4	-6.3	-10.1	-6.3	50.0	-7.6
Persons (c)						
Mar 2004 - Feb 2005	739	353	211	204	42	1558
Mar 2003 - Feb 2004	763	407	238	185	32	1632
% change	-3.1	-13.3	-11.3	10.3	31.3	-4.5
Ave annual % change (d)						
Feb 2000 to Feb 2005	-1.8	-4.0	-6.4	3.0	-0.5	-2.4

(a) Includes pillion passengers

(b) Includes road users not separately specified

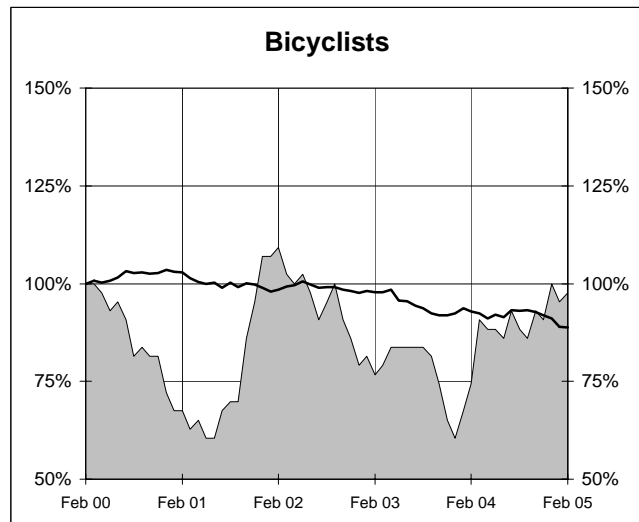
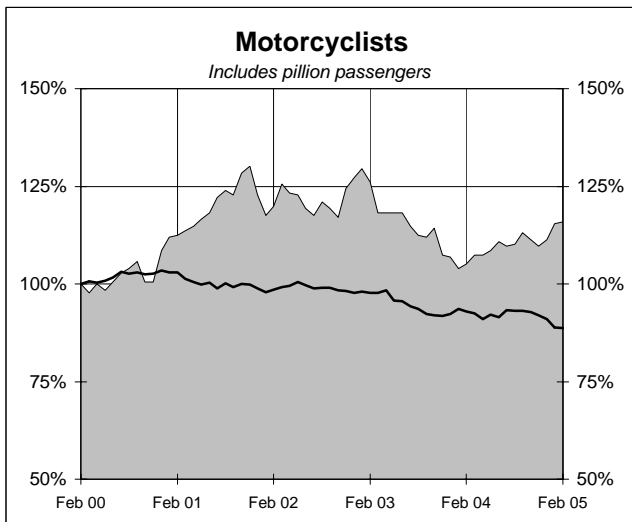
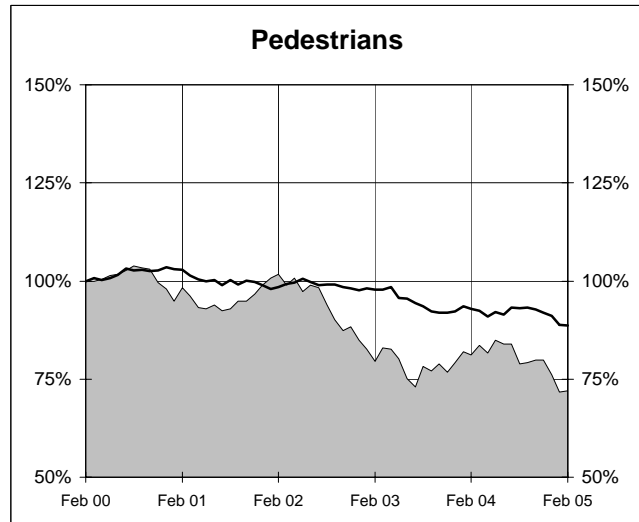
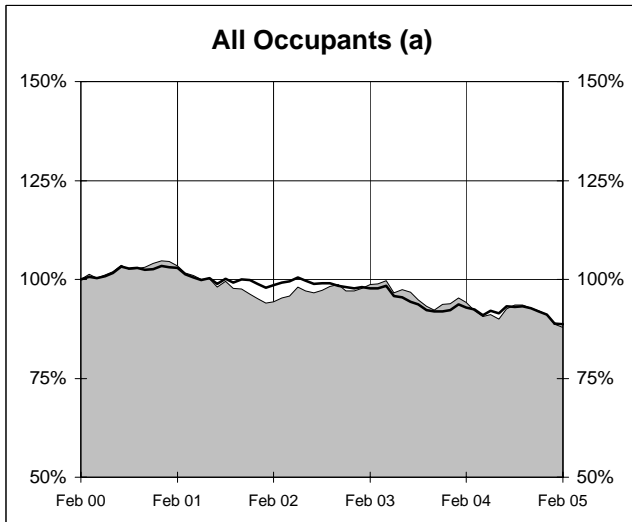
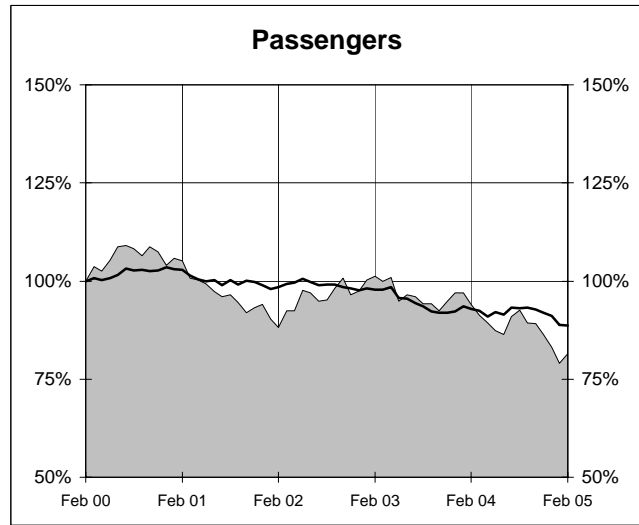
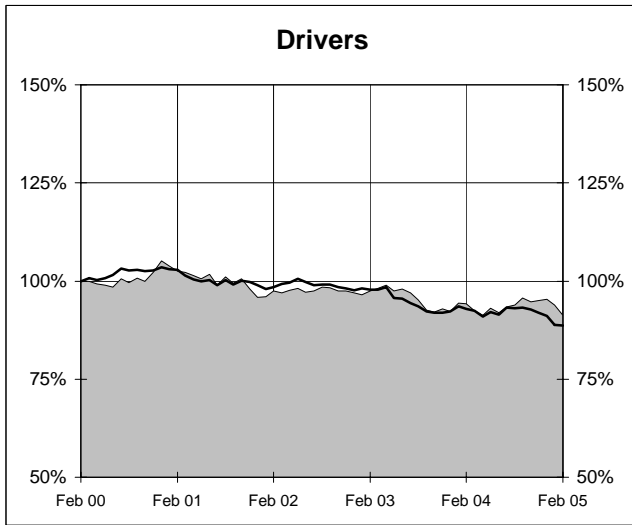
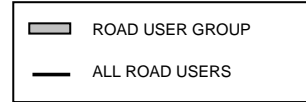
(c) Includes road users with unstated gender

(d) This represents the average annual exponential change between the annual count of 5 years ago and the current annual count

DEATHS IN EACH ROAD USER GROUP - TRENDS

Annual deaths in each road user group - last 5 years

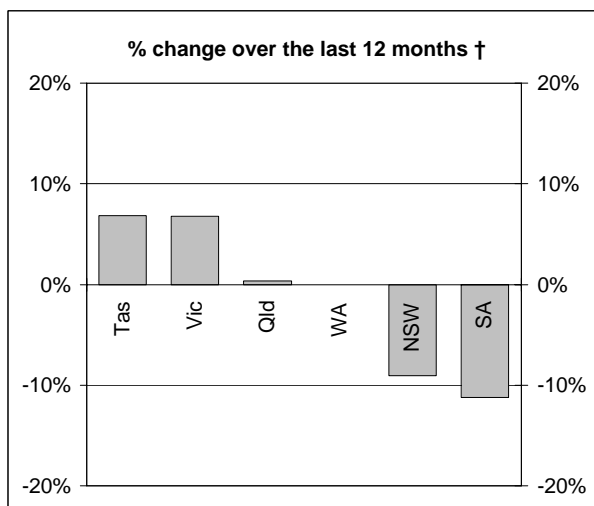
The number shown at each month represents the number of deaths in the preceding 12 months expressed as a percentage of the number of deaths in the 12 months to February 2000.



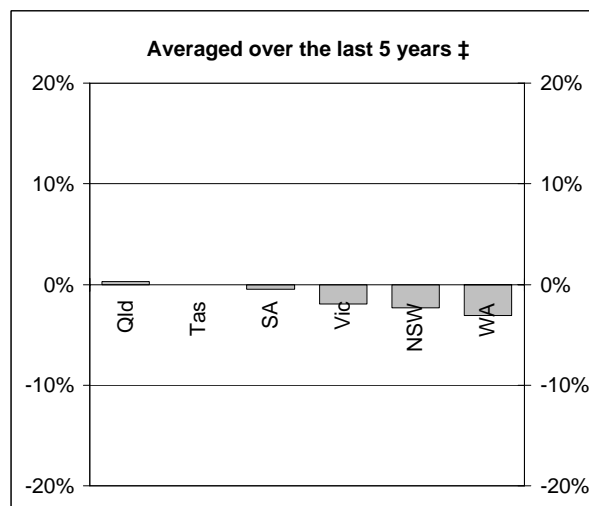
(a) Includes drivers and passengers

NUMBER OF FATAL ROAD CRASHES

Percentage change in fatal crashes in each State



† Percentage change between the 12-month periods of Mar 2003 - Feb 2004 and Mar 2004 - Feb 2005



‡ Average annual percentage change over each of the 12-month periods from Mar 1999 - Feb 2000 to Mar 2004 - Feb 2005

Fatal crashes by State/Territory for month, year to date and twelve months - period ended February 2005 and period ended February 2004

	NSW	Vic	Qld	SA	WA	Tas	NT	ACT	Australia
Current month									
Feb 2005	32	23	19	7	14	2	3	2	102
Feb 2004	41	20	12	9	13	8	6	0	109
% change	-22.0	15.0	58.3	-22.2	7.7	-75.0	-50.0	-	-6.4
Year to date									
Jan 2005 - Feb 2005	66	52	35	13	26	6	4	3	205
Jan 2004 - Feb 2004	87	50	37	22	29	11	8	2	246
% change	-24.1	4.0	-5.4	-40.9	-10.3	-45.5	-50.0	50.0	-16.7
12 months to date									
Mar 2004 - Feb 2005	451	314	287	119	159	47	30	11	1418
Mar 2003 - Feb 2004	496	294	286	134	159	44	46	10	1469
% change	-9.1	6.8	0.3	-11.2	0.0	6.8	-34.8	10.0	-3.5
Ave annual % change (a)									
Feb 2000 to Feb 2005	-2.4	-1.9	0.3	-0.5	-3.1	0.0	-6.9	-4.7	-1.8

(a) This represents the average annual exponential change between the annual count of 5 years ago and the current annual count

FATAL CRASHES INVOLVING TRUCKS AND BUSES

Fatal crashes and deaths involving articulated trucks and buses -
twelve months ended February 2005 and twelve months ended February 2004

	NSW	Vic	Qld	SA	WA	Tas	NT	ACT	Australia
--	-----	-----	-----	----	----	-----	----	-----	-----------

FATAL CRASHES INVOLVING ARTICULATED TRUCKS

Number of crashes

Mar 2004 - Feb 2005	56	28	14	10	12	3	1	0	124
Mar 2003 - Feb 2004	53	33	27	10	14	3	2	1	143
									(-13.3%)

Number of deaths

Mar 2004 - Feb 2005	62	29	15	12	13	3	1	0	135
Mar 2003 - Feb 2004	66	38	31	10	16	3	2	1	167
									(-19.2%)

Note: Data on heavy rigid trucks not currently available

FATAL CRASHES INVOLVING BUSES

Number of crashes

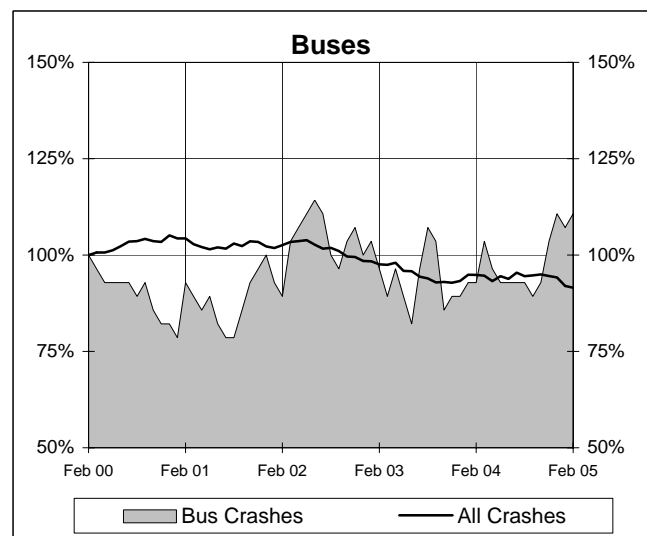
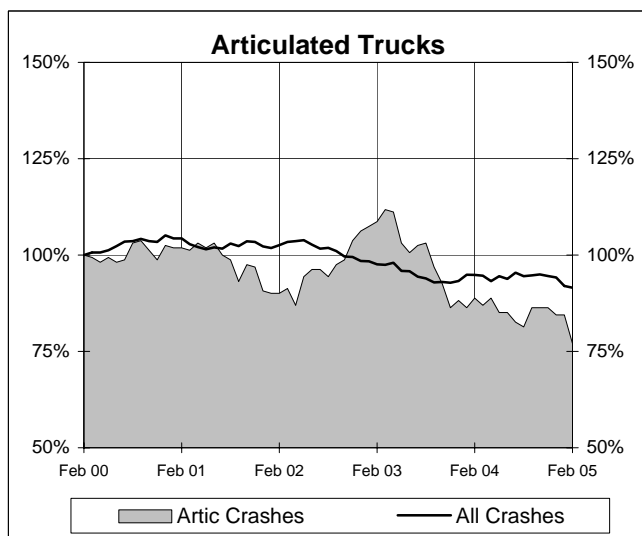
Mar 2004 - Feb 2005	18	5	5	3	0	0	0	0	31
Mar 2003 - Feb 2004	12	3	4	2	2	1	1	1	26
									(+19.2%)

Number of deaths

Mar 2004 - Feb 2005	18	5	5	3	0	0	0	0	31
Mar 2003 - Feb 2004	14	3	4	3	2	1	1	1	29
									(+6.9%)

Annual count of fatal crashes involving articulated trucks and buses - last 5 years

The number shown at each month represents the number of fatal crashes in the preceding 12 months expressed as a percentage of the number of fatal crashes in the 12 months to February 2000.



CHARACTERISTICS OF FATAL CRASHES

Proportion (per cent) of fatal crashes by speed limit, crash type, time of day, and time of week - two years ended February 2005 and two years ended February 2000

	<i>Speed limit (km/h) (a)</i>			<i>Time of Day</i>	
	<i>Up to 60</i>	<i>65-95</i>	<i>100+</i>	<i>Day time</i>	<i>Night-time (b)</i>
<i>Mar 2003 - Feb 2005</i>	33.2	22.4	44.5	55.4	44.6
<i>Mar 1998 - Feb 2000</i>	33.3	21.5	45.2	54.7	45.3

	<i>Crash Type</i>			<i>Time of week</i>	
	<i>Pedestrian crash</i>	<i>Other single veh. crash</i>	<i>Other multiple veh. crash</i>	<i>Week day</i>	<i>Week-end (c)</i>
<i>Mar 2003 - Feb 2005</i>	15.3	44.4	40.3	58.4	41.6
<i>Mar 1998 - Feb 2000</i>	19.7	38.6	41.7	58.9	41.1

(a) Excludes ACT

(b) 6:00 pm to 5:59 am

(c) 6:00 pm Friday to 5:59 am Monday