

**PORTFOLIO ADDITIONAL
ESTIMATES STATEMENTS**

2001-02

**TRANSPORT AND REGIONAL
SERVICES PORTFOLIO**

© Commonwealth of Australia 2002

ISBN

This work is copyright. Apart from any use as permitted under the *Copyright Act 1968*, no part may be reproduced by any process without prior written permission from the Commonwealth available from AusInfo. Requests and inquiries concerning reproduction and rights should be addressed to the Manager, Legislative Services, AusInfo, GPO Box 1920, Canberra ACT 2601.

Senator the Hon Margaret Reid
President of the Senate
Parliament House
CANBERRA ACT 2600

The Hon Neil Andrew MP
Speaker of the House of Representatives
Parliament House
CANBERRA ACT 2600

Dear Madam President
Dear Mr Andrew

As part of my responsibility to Parliament, and through it, the public, I am pleased to forward the Portfolio Additional Estimates Statements for the Transport and Regional Services Portfolio for the 2001-02 financial year.

For the information of Senators and Members, and to assist in meeting the responsibilities of the Government for public accountability, these statements present information on resource requirements for the delivery of outputs and administered items by agencies in my portfolio.

Yours sincerely

JOHN ANDERSON

TABLE OF CONTENTS

PART A – USER GUIDE	5
PART B – PORTFOLIO OVERVIEW	9
Overview	11
Structure of Portfolio.....	12
Additional Estimates and Variations – Portfolio Level.....	13
Portfolio Resources	14
AGENCY BUDGET STATEMENTS	
PART C – DEPARTMENT OF TRANSPORT AND REGIONAL SERVICES	17
Section 1 – Department Overview	19
Overview	21
Organisational Structure.....	22
Resources	24
Variations to Appropriations	25
New Measures	27
Section 2 – Outcomes, Administered Programmes and Outputs Information	33
Outcomes and Outputs Framework.....	35
Operating and Capital Resources	38
Administered Programme Performance Information	43
Departmental Outputs Performance Information	50
Section 3 – Budgeted Financial Statements	51
Summary of Planned Financial Performance	53
Budgeted Financial Statements	56
PART D – STEVEDORING INDUSTRY FINANCE COMMITTEE	73
Section 1 – Agency Overview	75
Overview	77
Appropriations.....	78
Section 2 – Outcomes and Outputs Information	79
Outcomes and Outputs Information	81
Resources	81
Output Performance Information	82
Section 3 – Budgeted Financial Statements	83
Glossary.....	89
Abbreviations	92
Index.....	93

PART A

USER GUIDE

PURPOSE OF PORTFOLIO ADDITIONAL ESTIMATES STATEMENTS

Portfolio Additional Estimates Statements (PAES) inform Senators and Members of the basis for the proposed additional estimates for the Portfolio. The PAES set out the links between outcomes sought by the Government and the programmes and outputs to be provided by the Portfolio's agencies.

The PAES outlines the variations to the outputs and administered items, resulting from the Additional Estimates, that the Portfolio's agencies will deliver to assist the Government to achieve the outcome it seeks for the community. The variations represent additions to, or reductions from, the outputs and administered items outlined in the 2001-02 Portfolio Budget Statements (PBS). The PAES has been prepared in accordance with Department of Finance and Administration guidelines, but includes additional information in a number of areas to enhance their value to Senators and Members. In this context, the agencies of the Portfolio welcome comments, suggestions or general feedback on the 2001-02 PAES.

STRUCTURE OF PORTFOLIO ADDITIONAL ESTIMATES STATEMENTS

Information in the PAES is presented in four parts.

Part A: User Guide

Provides an introduction explaining the purpose of the PAES as well as information in relation to the styles and conventions used.

Part B: Portfolio Overview

Provides an overview of the Portfolio, including its structure, a summary of the Portfolio's responsibilities and purpose.

Parts C and D: Agency Budget Statements

There are budget statements for each of the General Government Sector agencies in the Portfolio that are seeking additional appropriation at Additional Estimates. These agencies are:

- the Department of Transport and Regional Services (Part C – page 17); and
- the Stevedoring Industry Finance Committee (Part D – page 73);

Each statement contains the following sections.

Section 1: Agency Overview

This section provides an overview of the agency, including its structure, appropriations, new measures, and budgeted financial performance.

Section 2: Outputs and Administered Programme Information

This section details planned agency outputs and administered items that contribute to the achievement of the portfolio outcome and planned performance information.

Section 3: Budgeted Financial Statements

This section contains the budgeted financial statements for both *departmental* and *administered* financial items covering the 2001-02 revised budget, the actual 2000-01 outcome and 2001-02 budget estimate for comparative purposes and each of the forward year estimates from 2002-03 to 2004-05.

ROUNDING CONVENTION

Unless otherwise stated the convention used in this document is to round amounts in the tables to the nearest thousand dollars. All “totals” are the rounded additions of unrounded figures and, therefore, may not be the strict sums of the figures presented in the text or tables.

ACCESS TO THE PORTFOLIO ADDITIONAL ESTIMATES STATEMENTS

Electronic access to the PAES is available through the Department’s internet site at: <http://www.dotars.gov.au/dept/budget>.

ENQUIRIES

The contact officer for all enquiries regarding the PAES is:

Jeremy Chandler
Chief Finance Officer
Phone: (02) 6274 6260
Fax: (02) 6274 6695
Email: jeremy.chandler@dotars.gov.au

PART B

PORTFOLIO OVERVIEW

PORTFOLIO OVERVIEW

The Transport and Regional Services Portfolio comprises five General Government Sector agencies that deliver a range of transport and regional services to assist the Minister for Transport and Regional Services and the Minister for Regional Services, Territories and Local Government to pursue outcomes for the benefit of the Australian community. These agencies are:

- the Department of Transport and Regional Services;
- the Civil Aviation Safety Authority;
- the Australian Maritime Safety Authority;
- the National Capital Authority; and
- the Stevedoring Industry Finance Committee.

The number of agencies has increased since the 2001-02 Budget due to the inclusion of the Stevedoring Industry Finance Committee (SIFC). SIFC has been reclassified from the Public Financial Enterprises sector to the General Government Sector as it now receives appropriation from Government.

The role of SIFC is to administer legal settlements relating to claims for damages from waterside workers alleging asbestos-related injuries, in accordance with legislation and Government policy.

An overview of the structure of the Portfolio is provided in the chart on the following page.

The strategic priorities of the portfolio and the roles of the portfolio agencies remains unchanged from those specified in the 2001-02 Portfolio Budget Statements.

STRUCTURE OF THE PORTFOLIO

Portfolio Outcome

A better transport system for Australia and greater recognition and opportunities for local, regional and territory communities

Minister for Transport and Regional Services

The Hon John Anderson MP

Minister for Regional Services, Territories and Local Government

The Hon Wilson Tuckey MP

Parliamentary Secretary to the Minister for Transport and Regional Services

Senator the Hon Ron Boswell

Department of Transport and Regional Services
Secretary, Ken Matthews

Australian Maritime Safety Authority
Chairman, Dr Ken Moss
Chief Executive Officer,
Clive Davidson

Stevedoring Industry Finance Committee
Chairman, Len Early
Chief Executive Officer,
Loretta Petroff

Civil Aviation Safety Authority
Chairman, Edward Anson
Director of Aviation Safety,
Mick Toller

National Capital Authority
Chairman, David Evans
Chief Executive Officer,
Annabelle Pegrum

ADDITIONAL ESTIMATES AND VARIATIONS - PORTFOLIO LEVEL

Additional appropriations are being sought for the Department of Transport and Regional Services and the Stevedoring Industry Finance Committee. Funding for the Civil Aviation Safety Authority, the Australian Maritime Safety Authority and the National Capital Authority remain unchanged from the 2001-02 Budget.

The Department of Transport and Regional Services is seeking additional appropriation of \$141.4m, comprising \$18.5m for Departmental Outputs, \$119m for Administered programmes and \$3.8m for Equity Injections and Loans. The increase in funding is mostly attributable to new measures and the rephasing of appropriations for administered programmes from 2000-01 to 2001-02 (details of variations to appropriations are provided at Part C, Department of Transport and Regional Services, Table 1.2: Variations to Appropriations).

The Stevedoring Industry Finance Committee is seeking an equity injection of \$22m (details of variations to appropriations are provided at Part D, Stevedoring Industry Finance Committee, Summary of Financial Performance).

PORTFOLIO RESOURCES

The revised appropriation for each Portfolio agency in 2001-02 is outlined in the table below. Details of revenue and expenses are provided at Section 3 in Parts C and D for the relevant agency.

Portfolio Agency	Output Appropriations (\$'000)	Administered Appropriations (\$'000)	Departmental Equity Injections and Loans (\$'000)	Administered Capital (\$'000)
Department of Transport & Regional Services				
Budget	199,845	3,122,503 ^(a)	0	0
Additional Estimates	18,545	119,032 ^(a)	3,800	0
Total	218,390	3,241,535	3,800	0
Civil Aviation Safety Authority				
Budget	101,849 ^(b)	0	0	0
Additional Estimates	0	0	0	0
Total	101,849	0	0	0
Australian Maritime Safety Authority				
Budget	73,471 ^(b)	3,600	1,700	0
Additional Estimates	0	0	0	0
Total	73,471	3,600	1,700	0
National Capital Authority				
Budget	17,104	7,414	500	13,689
Additional Estimates	0	0	0	0
Total	17,104	7,414	500	13,689
Stevedoring Industry Finance Committee				
Budget	0	0	0	0
Additional Estimates	0	0	21,990	0
Total	0	0	21,990	0
Portfolio Total	410,814	3,252,549	27,990	13,689

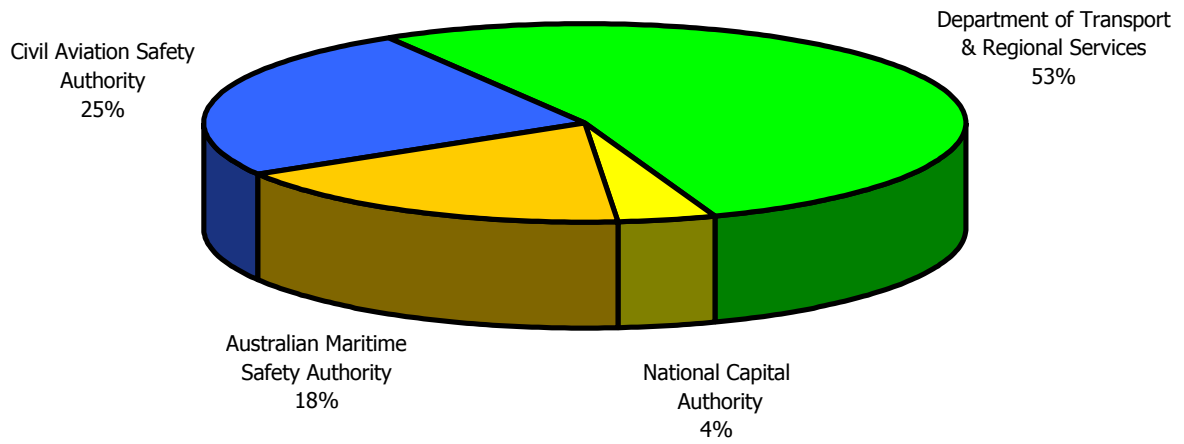
Notes:

(a) Includes Special Appropriations. Details of Special Appropriations are provided at Part C, Department of Transport and Regional Services, Table 1.1: 2001-02 Appropriations and Other Revenue.

(b) Includes Special Appropriations in relation to industry levies.

The relative size of each agency in the Portfolio, in terms of output appropriation from Government, is illustrated in the graph on the following page.

2001-02 Output Appropriation by Portfolio Agency ('000)



PART C

Department of Transport and Regional Services

AGENCY ADDITIONAL ESTIMATES STATEMENTS

SECTION 1

Overview

DEPARTMENT OVERVIEW

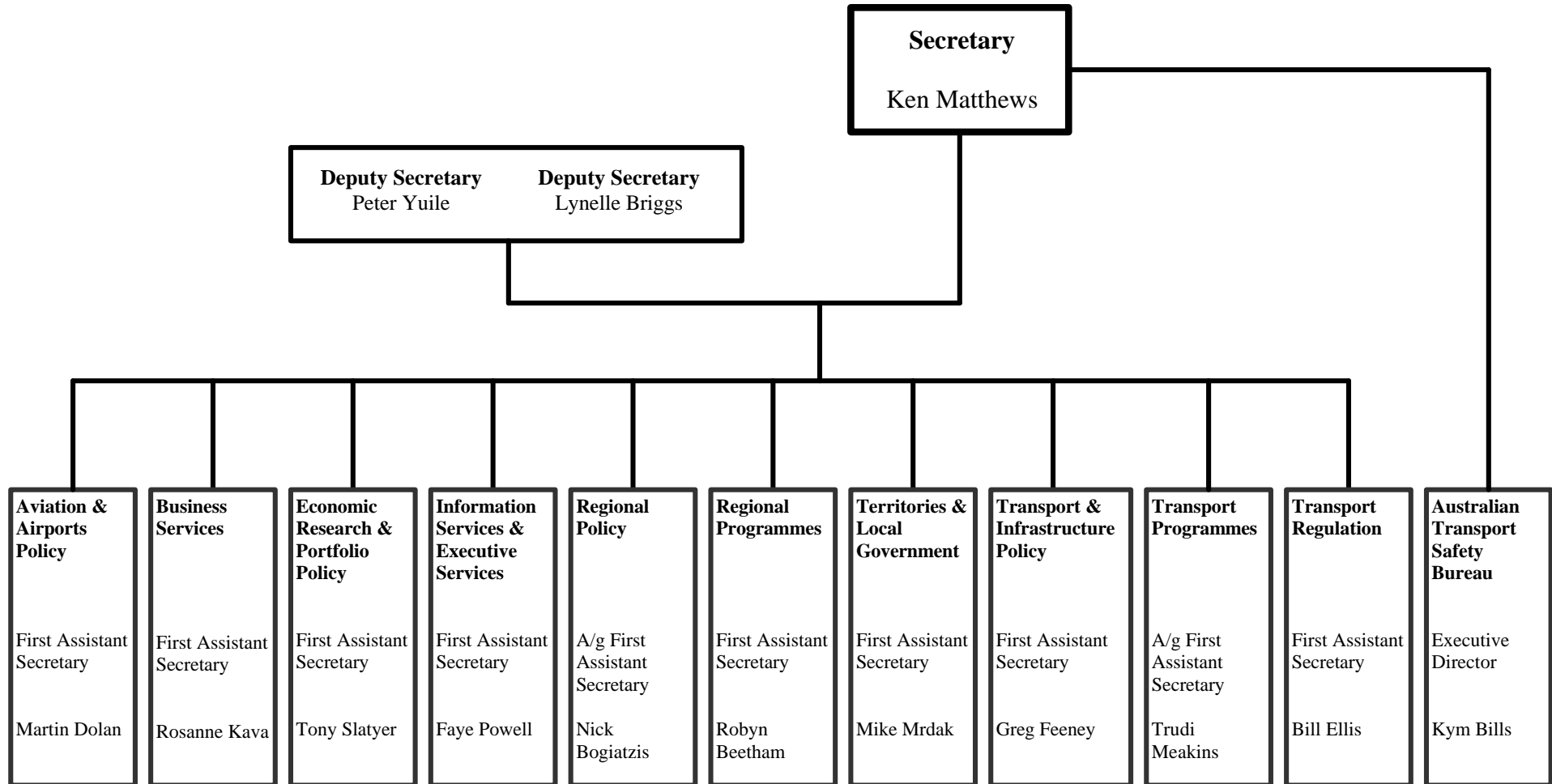
The role of the Department of Transport and Regional Services remains substantially unchanged from that stated in the 2001-02 Portfolio Budget Statements (PBS). However, as a result of the 2001 Administrative Arrangements Order, some functions were transferred to the Department from the Department of Finance and Administration and the Department of Employment and Workplace Relations. These functions are:

- Natural Disaster Relief Arrangements;
- Natural Disaster Risk Management Studies Programme;
- Ex-gratia Disaster Relief Packages;
- National Disaster Memorials;
- Regional Assistance Programme; and
- Dairy Regional Assistance Programme.

ORGANISATION STRUCTURE

The Department's internal structure was reorganised on 1 January 2002 to better align the organisation and programme delivery responsibility with its outputs framework. The revised internal structure improves the transparency of the Department's accountability framework and will improve internal and external reporting functions by enabling the Department to focus on the outcome it is seeking to achieve.

DEPARTMENT OF TRANSPORT AND REGIONAL SERVICES – ORGANISATIONAL STRUCTURE



COMPARISON BETWEEN NEW ORGANISATIONAL STRUCTURE AND THE 2000-01 PBS ORGANISATIONAL STRUCTURE

2001-02 PBS Organisational Structure	Revised Organisational Structure
Australian Transport Safety Bureau	Australian Transport Safety Bureau
Airports Aviation	Aviation & Airports Policy
Business Services & Strategy	Business Services
Aviation Economic Research & Environment	Economic Research & Portfolio Policy
Executive Services Information Services	Information Services & Executive Services
Regional Services, Development & Local Government	Regional Policy
Regional Services, Development & Local Government	Regional Programmes
Territories & Regional Support	Territories & Local Government
Airports Cross-Modal & Maritime Transport Land Transport	Transport & Infrastructure Policy
Australian Transport Safety Bureau Airports Aviation Cross-Modal & Maritime Transport Land Transport	Transport Programmes
Airports Aviation Cross-Modal & Maritime Transport Land Transport	Transport Regulation

RESOURCES

The total appropriation to be received by the Department in 2001-02 is \$3,463.7m, comprising \$222.2m for departmental outputs and equity injections and \$3,241.5m for administered programmes and capital. Details of these appropriations are provided at Table 1.1 below.

The Department's administered and departmental appropriations in 2001-02 have increased by \$141.0m since Budget primarily as a result of measures announced in, and preceding, the 2001-02 Budget. Details of these measures are provided at Table 1.3.

Table 1.1: 2001-02 Appropriations and Other Revenue

	2000-01 Actual \$'000	2001-02 Budget \$'000	2001-02 Additional Estimate \$'000	2001-02 Revised Budget \$'000	Variance (a)
<u>Appropriation Bill No. 3</u>					
Departmental Outputs	190,482	199,845	18,545	218,390	9.3%
Administered Programmes	195,879	203,445	125,782	329,227	61.8%
Total	386,361	403,290	144,327	547,617	35.8%
<u>Appropriation Bill No. 4</u>					
Specific Purpose Payments to the States and Territories	56,917	96,617	6,476	103,093	6.7%
Equity Injections and Loans					
Departmental Equity Injections	4,829	0	3,800	3,800	N/A
Administered Capital	614	0	0	0	0%
Total	62,360	96,617	10,276	106,893	10.6%
<u>Special Appropriations</u>					
<i>Australian Land Transport Development Act 1988</i>	875,443	1,074,534	(11,265)	1,063,269	-1.0%
<i>Interstate Road Transport Act 1985</i>	26,570	27,100	3,000	30,100	11.1%
<i>Local Government (Financial Assistance) Act 1995</i>	1,322,493	1,383,477	(1,339)	1,382,138	-0.1%
<i>Protection of the Sea (Oil Pollution Compensation Fund) Act 1993</i>	4,201	5,900	(1,157)	4,743	-19.6%
<i>Stevedoring Levy (Collection) Act 1998</i>	29,884	31,430	(2,465)	28,965	-7.8%
<i>Roads to Recovery Act 2000</i>	150,000	300,000	0	300,000	0%
Total	2,408,591	2,822,441	(13,226)	2,809,215	-0.5%
<u>Total Appropriations</u>					
Departmental	195,311	199,845	22,345	222,190	11.1%
Administered	2,662,001	3,122,503	119,032	3,241,535	3.8%
Total	2,857,312	3,322,348	141,377	3,463,725	4.3%
<u>Revenue From Other Sources^(b)</u>					
Departmental	16,988	13,992	2,979	16,971	21.3%
<u>Special Accounts (Administered)^(c)</u>					
Federation Fund Projects	56,301	110,530	(34,800)	75,730	-31.5%
Rural Transactions Centres	6,220	18,446	4,733	23,179	25.7%
Total	62,521	128,976	(30,067)	98,909	-23.3%

Notes:

(a) Variance represents percentage change in 2001-02 Revised Budget from the 2001-02 Budget estimate.

(b) Includes GST.

(c) Appropriations have already been recognised in previous years. The estimates reflect actual cash payments.

TABLE 1.2: VARIATIONS TO APPROPRIATIONS

	2001-02 Additional Estimate \$'000	2002-03 Budget Impact \$'000	2003-04 Budget Impact \$'000	2004-05 Budget Impact \$'000
Appropriation Bill No.3				
Departmental Outputs				
<u>New Measures</u>				
Ansett - Rapid Route Recovery Scheme	1,350	0	0	0
Relief for Stranded Ansett Passengers	1,900	0	0	0
Stronger Regions Programme	11,199	3,149	2,425	2,500
Tamworth Australasian-Pacific Aeronautical College	150	103	104	105
Additional funding to address unauthorised arrivals	400	0	0	0
Total	14,999	3,252	2,529	2,605
<u>Administrative Arrangement Orders</u>				
Transfers from the Department of Finance and Administration	0	620	634	647
Transfers from the Department of Employment and Workplace Relations	0	11,989	10,718	10,940
Total	0	12,609	11,352	11,587
<u>Estimates Adjustments</u>				
Ex-gratia Disaster Relief Package - Sugar Industry Assistance	26	0	0	0
Insolvency advice and legal costs associated with Ansett hardship relief	1,500	0	0	0
Parameter Adjustments	1,202	2,687	3,517	4,246
Capital Use Charge	818	1,236	7,132	8,364
Total	3,546	3,923	10,649	12,610
Total Departmental Outputs	18,545	19,784	24,530	26,802
Administered Expenses				
<u>New Measures</u>				
Ansett - Rapid Route Recovery Scheme	30,000	0	0	0
Ex-gratia Disaster Relief Package - 2001 Bushfire Relief Appeal	1,000	0	0	0
Ex-gratia Disaster Relief Package - Helitankers	800	0	0	0
Payment Scheme For Airservices Australia's Enroute Charges	2,900	0	0	0
Relief for Stranded Ansett Passengers	19,050	0	0	0
Structural Adjustment Programme for the Wide Bay Burnett region in Queensland	4,000	0	0	0
Sustainable Regions Programme	5,485	36,180	28,592	25,116
Tamworth Australasian-Pacific Aeronautical College	1,450	942	1,040	230
Australian Stockman's Hall of Fame and Outback Heritage Centre	-2,000	0	0	0
Total	62,685	37,122	29,632	25,346
<u>Administrative Arrangement Orders</u>				
Dairy Regional Assistance Programme	0	23,500	0	0
Regional Assistance Programme	0	24,533	37,120	38,047
Total	0	48,033	37,120	38,047
<u>Rephasings</u>				
2002 - Year of the Outback	400	-400	0	0
Compensation payment to SACL for the sale of Sydney Airport land	2,000	0	0	0
Flood Assistance Package - Small Business Grants	2,647	0	0	0
Foundation for Rural and Regional Renewal	-561	0	0	0
Implementation of Noise Amelioration for Adelaide Airport	-1,000	0	0	0
Management of residual issues of former Australian National Railway Commission (AN)	500	500	500	500
Regional Solutions Programme	-1,000			
Remote Air Services Subsidy Scheme	128	127	127	0
Sydney West Airports - Land Acquisition and Works	100	0	0	0
Upgrade of the Mainline Interstate Railway Track	37,790	0	0	0
Total	41,004	227	627	500
<u>Estimates Adjustments</u>				
Australia's response to foot and mouth disease and other quarantine risks	19,400	0	0	0
Ex-gratia Disaster Relief Package - Sugar Industry Assistance	2,940	0	0	0
Flood Assistance Package - Small Business Grants	-11	0	0	0
Flood Recovery Fund	-3,989	0	0	0
Implementation of Noise Amelioration for Adelaide Airport	-590	0	0	0
Implementation of Noise Amelioration for Sydney Airport	-2,333	0	0	0
International Civil Aviation Organisation - contribution	62	62	62	62
Regional Solutions Programme	7	0	0	0
Tasmanian Freight Equalisation Scheme	6,650	4,693	4,030	3,361
Depreciation	-43	-44	-44	-44
Total	22,093	4,711	4,048	3,379
<u>Parameter Adjustments</u>				
Implementation of Noise Amelioration for Adelaide Airport	0	46	46	0
Remote Air Services Subsidy Scheme	0	25	28	27
Total	0	71	74	27
Total Administered Expenses	125,782	90,164	71,501	67,299

TABLE 1.2: VARIATIONS TO APPROPRIATIONS (continued)

	2001-02 Additional Estimate \$'000	2002-03 Budget Impact \$'000	2003-04 Budget Impact \$'000	2004-05 Budget Impact \$'000
Appropriation Bill No.4				
Specific Purpose Payments to the States and Territories				
<u>New Measures</u>				
Gold Coast Light Rail Project	0	650	0	0
Total	0	650	0	0
<u>Rephasings</u>				
Regional Flood Mitigation Programme	2,476	0	0	0
Total	2,476	0	0	0
<u>Parameter Adjustments</u>				
Payment to ACT - assistance for water and sewerage services	0	34	35	35
Payment to ACT - compensation for the effects of national capital influence on the costs of providing municipal services	0	84	86	88
Total	0	118	121	123
<u>Administrative Arrangement Orders</u>				
Natural Disaster Relief Arrangements	0	80,000	80,000	80,000
Total	0	80,000	80,000	80,000
<u>Estimates Adjustments</u>				
Lismore Levee Programme	4,000	0	0	0
Natural Disaster Relief Arrangements	0	52,000	22,540	12,540
Total	4,000	52,000	22,540	12,540
Total Specific Purpose Payments to the States and Territories	6,476	132,768	102,661	92,663
Departmental Equity Injections				
<u>New Measures</u>				
Asia Pacific Space Centre - equity funding	3,800	53,600	11,200	0
Total	3,800	53,600	11,200	0
Total Departmental Equity Injections	3,800	53,600	11,200	0
Administered Capital				
<u>Administrative Arrangement Orders</u>				
Natural Disaster Relief Arrangements	0	5,000	5,000	5,000
Total	0	5,000	5,000	5,000
<u>Estimates Adjustments</u>				
Australian Rail Track Corporation Equity Injection	0	111,000	0	0
Total	0	111,000	0	0
Total Administered Capital	0	116,000	5,000	5,000
Special Appropriations				
<u>Estimates Adjustments</u>				
Interstate Road Transport Fees	3,000	3,000	3,000	3,000
National Highway and Roads of National Importance	5,300	14,400	13,300	7,000
Oil Pollution Compensation Fund	-1,157	0	0	0
Payments to MIFCo	-2,465	0	0	5,915
Total	4,678	17,400	16,300	15,915
<u>Reprofiling</u>				
National Highway and Roads of National Importance	-16,829	-627	-627	-500
Road Safety Black Spot Programme	264	0	0	0
Total	-16,565	-627	-627	-500
<u>Parameter Adjustments</u>				
Local Government Financial Assistance Grants	-1,339	26,557	15,290	14,800
National Highway and Roads of National Importance	0	9,360	9,818	9,897
Total	-1,339	35,917	25,108	24,697
Total Special Appropriations	-13,226	52,690	40,781	40,112
Special Accounts				
<u>Reprofiling</u>				
Federation Fund Projects	-34,800	38,000		
Rural Transactions Centres	4,733	0	0	0
Total	-30,067	38,000	0	0
Total Special Accounts	-30,067	38,000	0	0

SUMMARY OF ADDITIONAL ESTIMATES MEASURES

Table 1.3: Summary of Measures since the 2001-02 Budget

Measure Title	Appropriations Budget 2001-02 (\$m)			Appropriations Estimate 2002-03 (\$m)			Appropriations Estimate 2003-04 (\$m)			Appropriations Estimate 2004-05 (\$m)		
	Admin Exp	Dept Outputs	Total	Admin Exp	Dept Outputs	Total	Admin Exp	Dept Outputs	Total	Admin Exp	Dept Outputs	Total
Expense Measures												
Ansett - Rapid Route Recovery Scheme	30.0	1.4	31.4	0	0	0	0	0	0	0	0	0
Relief for Stranded Ansett Passengers	19.1	1.9	21.0	0	0	0	0	0	0	0	0	0
Stronger Regions Programme – awareness raising and access to information	0	7.7	7.7	0	1.7	1.7	0	1.7	1.7	0	1.7	1.7
Stronger Regions Programme – regional business development analysis	0	1.1	1.1	0	0.4	0.4	0	0	0	0	0	0
Stronger Regions Programme – sustainable regions	5.5	2.4	7.9	36.2	1.1	37.3	28.6	0.7	29.3	25.1	0.8	25.9
Structural Adjustment Programme for the Wide Bay Burnett region in Queensland	4.0	0	4.0	0	0	0	0	0	0	0	0	0
Tamworth Australasian-Pacific Aeronautical College	1.5	0.2	1.7	0.9	0.1	1.0	1.0	0.1	1.1	0.2	0.1	0.3
Construction of a new Scoresby Freeway (additional funding from 2005-06)	0	0	0	0	0	0	0	0	0	0	0	0
Contribution to Christmas 2001 New South Wales Bushfire Relief Appeal	1.0	0	1.0	0	0	0	0	0	0	0	0	0
Transportation costs for the American Helitankers	0.8	0	0.8	0	0	0	0	0	0	0	0	0
Payment Scheme For Airservices Australia's Enroute Charges	2.9	0	2.9	0	0	0	0	0	0	0	0	0

Table 1.3: Summary of Measures since the 2001-02 Budget (continued)

Measure Title	Appropriations Budget 2001-02 (\$m)			Appropriations Estimate 2002-03 (\$m)			Appropriations Estimate 2003-04 (\$m)			Appropriations Estimate 2004-05 (\$m)		
	Admin Exp	Dept Outputs	Total	Admin Exp	Dept Outputs	Total	Admin Exp	Dept Outputs	Total	Admin Exp	Dept Outputs	Total
Expense Measures (continued)												
Gold Coast Light Rail Project	0	0	0	0.7	0	0.7	0	0	0	0	0	0
Lismore Levee Programme	0	0	0	0	0	0	0	0	0	0	0	0
Australian Stockman's Hall of Fame and Outback Heritage Centre	-2.0	0	-2.0	0	0	0	0	0	0	0	0	0
Additional funding to address unauthorised arrivals	0	0.4	0.4	0	0	0	0	0	0	0	0	0
Total Expense Measures	62.8	15.1	77.9	37.8	3.3	41.1	29.6	2.5	32.1	25.3	2.6	27.9
Capital Measures												
Asia Pacific Space Centre – equity funding	0	3.8	3.8	0	53.6	53.6	0	11.2	11.2	0	0	0
Total Capital Measures	0	3.8	3.8	0	53.6	53.6	0	11.2	11.2	0	0	0
Revenue Measures												
Air Passenger Ticket Levy	73.8	0	73.8	98.4	0	98.4	98.4	0	98.4	98.4	0	98.4
Total Revenue Measures	73.8	0	73.8	98.4	0	98.4	98.4	0	98.4	98.4	0	98.4

DETAILS OF MEASURES SINCE THE 2001-02 BUDGET

Expenses Measures

Ansett - Rapid Route Recovery Scheme

The Government will provide up to \$31.4 million in 2001-02 in transitional support to enable the continuation of air services to communities, particularly in regional areas, which have lost their air services as a direct result of the placement of the Ansett Group into Voluntary Administration. The assistance will be provided through direct grants or loans to eligible applicants for a period of 3 to 6 months.

Relief for Stranded Ansett Passengers

The Government is providing up to \$21 million in 2001-02 to assist passengers stranded by the financial collapse of the Ansett Group to return to their home base. The assistance includes alternative transportation costs, some accommodation costs and reimbursement of double payments of the Passenger Movement Charge. Centrelink is providing claims processing and call centre support.

Stronger Regions Programme – awareness raising and access to information

The Government will provide \$12.7 million over four years to ensure widespread awareness and promote increased uptake of existing Commonwealth programmes and services by rural, regional and remote communities. Of this amount, \$2.5 million will be provided over four years to expand the existing Countrylink information service. The remaining \$10.2 million will be provided for a communications campaign to increase awareness and encourage the uptake of existing and newly announced Government programmes targeting regional Australia.

Stronger Regions Programme – regional business development analysis

This measure forms part of the Stronger Regions programme. The Government will provide \$1.5 million over two years to identify impediments to growth, the effectiveness of current Government assistance for regional businesses and develop options for achieving sustainable regional businesses and removing growth impediments. The analysis will be conducted in a consultative manner and will take account of the views of interested stakeholders including regional interests, the private sector and the general public.

Stronger Regions Programme – sustainable regions

The Government will provide \$100.5 million over four years to assist a number of regions to:

- formulate and test future development options for the region;
- identify and support specific activities to promote sustainable development;
- support community leadership in the development of local solutions;
- foster new ideas, community energy, drive and self reliance; and
- forge partnerships between the private sector and all three spheres of government.

The programme offers a planned, integrated approach to structural adjustment which is a significant development issue facing many regional communities. Assistance under the programme will initially be provided to eight “prototype” regions.

Structural Adjustment Programme for the Wide Bay Burnett region in Queensland

The Government will provide \$4 million in 2001-02 to stimulate new investment in the Wide Bay Burnett region to create a stronger and more diverse economic base and long-term sustainable employment. The Wide Bay Burnett region in Queensland has suffered from persistent long-term unemployment and significant social disadvantage. Funding will be directed to business and local government who will be required to match the Commonwealth’s contribution.

Tamworth Australasian-Pacific Aeronautical College

The Government will contribute \$4.1 million over four years to the establishment of the Australasian-Pacific Aeronautical College to provide accredited training to help meet the current shortage of aircraft maintenance engineers. The College will be based at the Tamworth airport.

The College is a joint venture between BAE Systems Flying College, Eastern Australia Airlines, the New England Institute of TAFE, the Tamworth City Council, the New England North West Area Consultative Committee and the New England North West Development Board.

Construction of a new Scoresby Freeway (additional funding from 2005-06)

The Government will provide additional funding of up to \$225 million over the financial years 2005-06 to 2006-07 towards the construction cost of the Scoresby Freeway, which runs between Ringwood and Frankston. In the 2001-02 Budget the Government allocated \$220 million over four years towards this project. The Commonwealth and Victorian Governments have now signed a Memorandum of Understanding confirming that each government will contribute to the construction of the Scoresby Freeway on a 50:50 basis. This additional funding commits the Commonwealth's contribution to 50 percent of the construction costs of the freeway. The freeway will deliver major national economic benefits and will be a catalyst for industrial and commercial development.

Contribution to Christmas 2001 New South Wales Bushfire Relief Appeal

The Government has provided a contribution of \$1 million in 2001-02 to the Christmas 2001 Bushfire Relief Appeal. The relief appeal has been established by the New South Wales Government to assist people affected by the fires during the Christmas period. The commitment made by the federal Government matches the contribution announced by the New South Wales Government.

Transportation costs for the American Helitankers

The Government provided \$800,000 in 2001-02 to the New South Wales Government for the costs of transporting two helitankers, the *Georgia Peach* and the *Incredible Hulk*, to Australia to assist in fighting the Christmas 2001 New South Wales bushfires. The helitankers have significantly bolstered the State and Territory aerial firefighting capability and will continue to assist efforts over a ten week period during the bushfire season.

Payment Scheme for Airservices Australia's Enroute Charges

The Government will pay the enroute air traffic control charges imposed by Airservices Australia on regional airline aircraft with a maximum takeoff weight of 15 tonnes or less. The payment of these charges by the Government will save the industry \$2.9 million in 2001-02. The scheme came into effect on 1 January 2002 and will assist many regional operators. It also applies to aircraft used by aeromedical operators such as the Royal Flying Doctor Service.

Gold Coast Light Rail Project

The Commonwealth will contribute \$650,000 in 2002-03 towards a feasibility study into the Gold Coast Light Rail Project from Helensvale to Broadbeach. The study will be managed jointly by Queensland Transport and Gold Coast City Council Transport Planning Branch at a cost of \$1.3 million. The Queensland State Government will match the Commonwealth's contribution.

Lismore Levee Programme

The Government will provide \$4 million in 2001-02 to accelerate the construction of the Lismore flood levee from six years to three years. The levee will redirect flood waters to prevent the flooding of homes and businesses. The \$4 million funding will be provided from existing funding within the Flood Recovery Fund and the Flood Assistance Package Small Business Grants Programmes.

Australian Stockman's Hall of Fame and Outback Heritage Centre

The Government will provide \$4 million in 2001-02 to the Australian Stockman's Hall of Fame and Outback Heritage Centre for improvements to the centre and its displays. This funding will enable the centre to maximise the heightened interest in remote Australia expected to flow from the Year of the Outback promotion.

Funding of \$2m will be provided from the Regional Solutions Programme. See also related expense measure in the Industry, Tourism and Resources Portfolio.

Additional funding to address unauthorised arrivals

The expense measure *Additional funding for unauthorised arrivals* in the 2001-02 MYEFO reported no funding for the Department of Transport and Regional Services in 2001-02. Since MYEFO, the Government has committed \$0.4 million in funding to the Department for increased service delivery costs on Christmas and Cocos (Keeling) Islands to continue action to deal with the offshore processing of unauthorised boat arrivals in 2001-02.

Capital Measures

Asia Pacific Space Centre – equity funding

The Government will contribute \$68.6 million over three years to provide common-use infrastructure to support commercial satellite launch facilities to be constructed on Christmas Island. Funding will be used to upgrade the airport runway, expand airport emergency services, establish a new port loading facility and construct a new connecting road.

See also the related expense measure titled *Funding for Asia Pacific Space Centre* in the Industry, Tourism and Resources portfolio.

Revenue Measures

Air Passenger Ticket Levy

The Government has introduced a \$10 air passenger ticket levy on tickets issued in Australia and purchased on or after 1 October 2001. The Government will use the revenue collected to fund a special safety net arrangement for the entitlements of Ansett employees who lose their jobs as the Ansett Group of companies restructure or wind up. The maximum amount to be recovered by the levy is \$500 million and annual revenues are dependent on the number of tickets issued.

See also related expense measure titled *Special Employee Entitlement Scheme for Ansett* in the Employment and Workplace Relations portfolio.

SECTION 2

Outcomes, Administered Programmes and Outputs Information

OUTCOME FRAMEWORK

The outcome framework of the Department of Transport and Regional Services remains unchanged from the 2001-02 Portfolio Budget Statements.

DEPARTMENTAL OUTPUTS

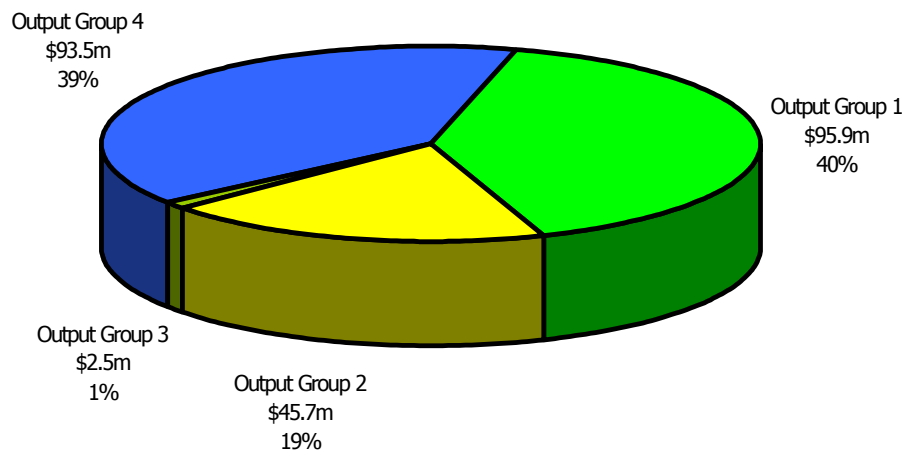
The Department's output framework has been amended since the 2001-02 Portfolio Budget Submission to reflect the Natural Disaster Relief functions transferred to the Department from the Department of Finance and Administration in the 2001 Administrative Arrangements Order (AAO). The Department has created a new output under Output Group 2 titled 'Natural Disaster Relief Arrangements'. The regional functions transferred to the Department from the Department of Employment and Workplace Relations in the AAO are consistent with the Department's existing outputs.

The relationship between outputs and output groups is illustrated in the 'Output Framework 2001-02' on the following page.

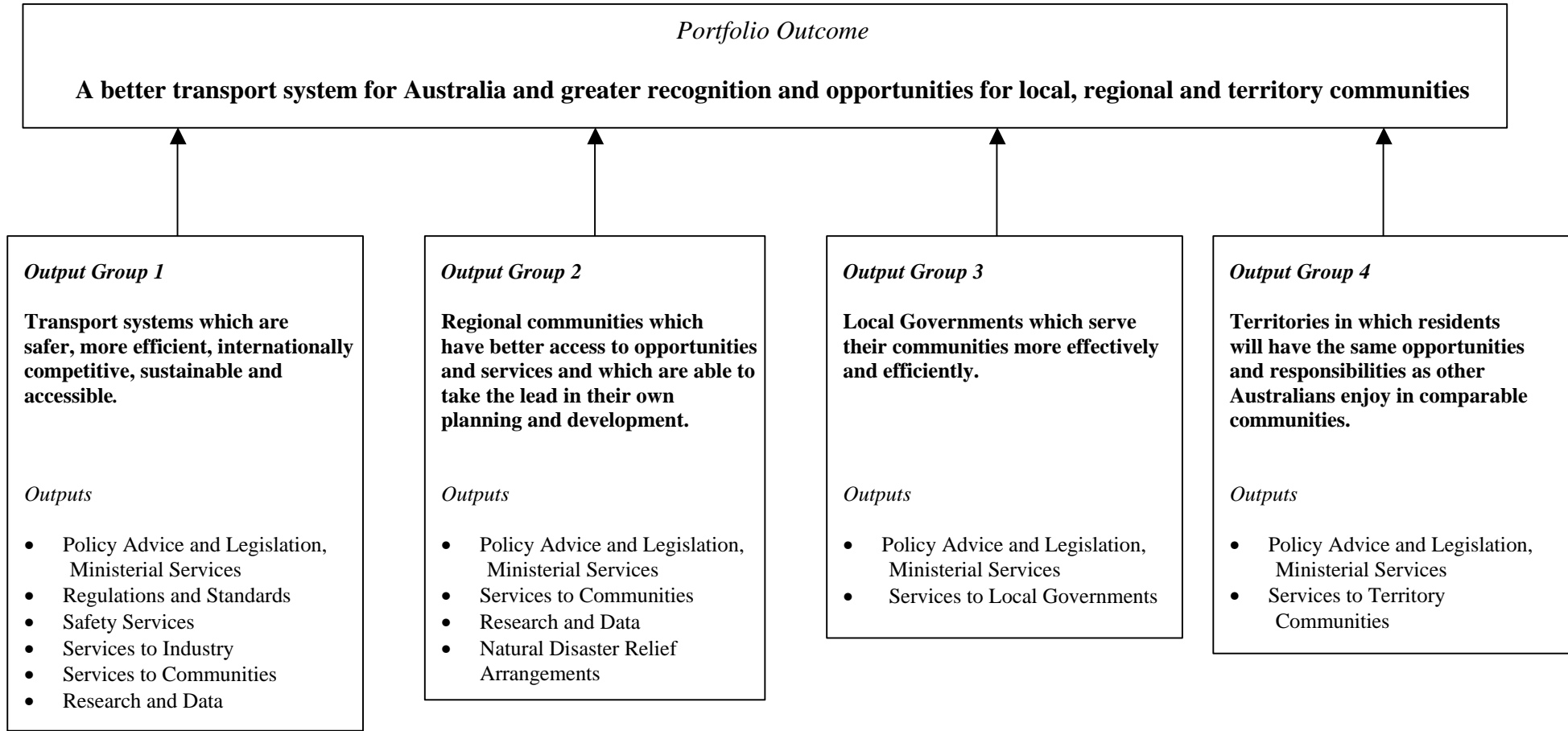
The relationship between the Output Framework and the Department's organisation structure is illustrated in the table at page 37.

The Department's price of outputs in 2001-02 for each output group is illustrated below in Chart 1. The budget estimates for each Departmental output are provided at Table 2.3 on page 41.

Chart 1 – Departmental Price of Outputs by Output Group in 2001-02
(Price of Outputs of \$238.1m)



OUTPUT FRAMEWORK – 2001-02



RELATIONSHIP BETWEEN THE DEPARTMENT'S OUTPUT FRAMEWORK AND ITS ORGANISATIONAL STRUCTURE

Outputs Framework	Contributing organisational Divisions and Bureaus
<p><i>Output Group 1 – Transport systems which are safer, more efficient, internationally competitive, sustainable and accessible.</i></p> <p>1.1 Policy Advice & Legislation, Ministerial Services</p> <p>1.2 Regulation and Standards</p> <p>1.3 Safety Services</p> <p>1.4 Services to Industry</p> <p>1.5 Services to Communities</p> <p>1.6 Research and Data</p>	<p>Australian Transport Safety Bureau Aviation & Airports Policy Transport & Infrastructure Policy</p> <p>Transport Regulation</p> <p>Australian Transport Safety Bureau</p> <p>Transport Programmes</p> <p>Transport Programmes</p> <p>Australian Transport Safety Bureau Economic Research & Portfolio Policy</p>
<p><i>Output Group 2 – Regional Communities which have better access to opportunities and services and which are able to take the lead in their own planning and development</i></p> <p>2.1 Policy Advice & Legislation, Ministerial Services</p> <p>2.2 Services to Communities</p> <p>2.3 Research and Data</p> <p>2.4 Natural Disaster Relief Arrangements</p>	<p>Regional Policy</p> <p>Regional Programmes Territories & Local Government</p> <p>Economic Research & Portfolio Policy</p> <p>Territories & Local Government</p>
<p><i>Output Group 3 – Local Governments which serve their communities more effectively and efficiently</i></p> <p>3.1 Policy Advice & Legislation, Ministerial Services</p> <p>3.2 Services to Local Governments</p>	<p>Territories & Local Government</p> <p>Territories & Local Government</p>
<p><i>Output Group 4 – Territories in which residents will have the same opportunities and responsibilities as other Australians enjoy in comparable communities</i></p> <p>4.1 Policy Advice & Legislation, Ministerial Services</p> <p>4.2 Services to Territory Communities</p>	<p>Territories & Local Government</p> <p>Territories & Local Government</p>

Note: The services provided by the Business Services Division and the Information Services & Executive Services Division contribute to the delivery of outputs by each Division and Bureau.

TABLE 2.1: SUMMARY OF OPERATING AND CAPITAL RESOURCES

	2000-01	2001-02	2001-02 Revised Budget	<i>Variance^(a)</i>	2002-03	2003-04	2004-05
	Actual \$'000	Budget \$'000	Budget \$'000		Estimate \$'000	Estimate \$'000	Estimate \$'000
Operating Resources							
Administered Programme Expenses	3,086,718	3,217,497	3,625,310	<i>12.7%</i>	3,353,977	3,209,622	3,044,598
Price of Outputs	211,280	209,214	238,146	<i>13.8%</i>	222,692	226,051	232,605
Total	3,297,998	3,426,711	3,863,456	<i>12.7%</i>	3,576,669	3,435,673	3,277,203
Capital Resources							
Administered Capital Injections ^(b)	614	0	7,734	<i>N/A</i>	5,000	5,000	5,000
Departmental Equity Injections	4,829	0	3,800	<i>N/A</i>	0	0	0
Total	5,443	0	11,534	<i>N/A</i>	5,000	5,000	5,000
Total Operating and Capital Resources	3,303,441	3,426,711	3,874,990	<i>13.1%</i>	3,581,669	3,440,673	3,282,203
Average Staffing Level (ASL) ^(c)	983.0	980.3	1,023.8	<i>4.4%</i>			

Notes:

- (a) Variance represents percentage change in 2001-02 Revised Budget over the 2001-02 Budget estimate.
- (b) Includes capital appropriations of \$0.359m and appropriation receivables of \$0.255m in 2000-01, and \$115.564m and \$3.170m respectively in 2001-02.
- (c) ASL estimates include Indian Ocean Territories based staff of 114.1 in 2000-01 and 121.4 in 2001-02. The increase in ASL estimates in 2001-02 is due to the transfer of 83 staff to the Department as a result of the 2001 Administrative Arrangements Order effective from 26 November 2001.

TABLE 2.2: OPERATING EXPENSES - ADMINISTERED PROGRAMMES

	2000-01	2001-02	2001-02 Revised Budget	Variance ^(a)	2002-03	2003-04	2004-05
	Actual \$'000	Budget \$'000	Budget \$'000		Estimate \$'000	Estimate \$'000	Estimate \$'000
<i>Administered Programme Group 1: Services for Communities Administered on Behalf of the Commonwealth</i>							
1.1 Services for Communities							
Implementation of Noise Amelioration for Adelaide Airport	1,851	15,000	13,410	-11%	23,738	23,499	0
Implementation of Noise Amelioration for Sydney Airport	37,202	34,116	31,783	-7%	0	0	0
Subsidy for transition to location-specific pricing for airport control towers	7,000	7,000	7,000	0%	7,000	0	0
Remote Air Services Subsidy Scheme	1,484	2,818	2,946	5%	2,999	3,034	2,737
Sydney West Airports - Land Acquisition and Works	165	0	100	N/A	0	0	0
Bass Strait Passenger Vehicle Equalisation Scheme	15,070	17,443	17,443	0%	18,243	19,143	19,717
Oil Pollution Compensation Fund	13,909	5,900	2,478	-58%	5,900	5,900	5,900
Regional Solutions Programme	2,591	22,600	25,609	13%	22,600	22,600	0
Rural Transactions Centres	6,303	18,446	23,095	25%	21,345	8,354	0
Special Structural Adjustment Package for the South West Forests Region of Western Australia	0	5,000	5,000	0%	0	0	0
Understanding Rural Australia	476	800	1,091	36%	0	0	0
2002 - Year of the Outback	0	200	600	100%	0	0	0
Rural Domestic Violence	42	0	15	N/A	0	0	0
Regional and Rural Development Grant	115	160	351	100%	160	160	160
Regional and Rural Research Information and Data	13	68	132	94%	68	68	68
Foundation for Rural and Regional Renewal	37	980	419	-57%	650	650	260
Flood Recovery Fund	953	8,500	4,511	-47%	0	0	0
Compensation payment to SAACL for the sale of Sydney Airport land	0	0	2,000	N/A	0	0	0
Flood Assistance Package - Small Business Grants	3,353	0	2,636	N/A	0	0	0
Ansett - Rapid Route Recovery Scheme	0	0	30,000	N/A	0	0	0
Relief for Stranded Ansett Passengers	0	0	19,050	N/A	0	0	0
Structural Adjustment Programme for the Wide Bay Burnett region in Queensland	0	0	4,000	N/A	0	0	0
Sustainable Regions Programme	0	0	5,485	N/A	36,180	28,592	25,116
Regional Assistance Programme (b)	0	0	24,157	N/A	24,533	37,120	38,047
Dairy Regional Assistance Programme (b)	0	0	17,868	N/A	23,500	0	0
Ex-gratia Disaster Relief Package - Contribution to Christmas 2001 New South Wales Bushfire Relief Appeal	0	0	1,000	N/A	0	0	0
Ex-gratia Disaster Relief Package - Transportation costs for the American Helitankers	0	0	800	N/A	0	0	0
Rural Communities Programme	4,167	0	0	0%	0	0	0
Rural Plan	4,809	0	0	0%	0	0	0
Newcastle Structural Adjustment Fund	735	0	0	0%	0	0	0
Act of grace payment	100	0	0	0%	0	0	0
Total	100,375	139,031	242,979	75%	186,916	149,120	92,005
1.2 Grants to States/Territories and Local Government							
Road Safety Black Spot Programme	39,194	48,846	45,087	-8%	4,130	0	0
Local Government Financial Assistance Grants	1,328,013	1,374,069	1,387,375	1%	1,438,847	1,490,357	1,543,265
Local Government Incentive Programme	760	0	3,286	N/A	0	0	0
Payment to ACT - compensation for the effects of national capital influence on the costs of providing municipal services	20,572	21,086	21,086	0%	21,592	22,045	22,508
Payment to ACT - assistance for water and sewerage services	8,271	8,477	8,477	0%	8,683	8,864	9,051
Regional Flood Mitigation Programme	6,874	10,054	12,530	25%	9,600	9,600	9,600
Natural Disaster Relief Arrangements (b)	0	0	68,723	N/A	132,000	102,540	92,540
Gold Coast Light Rail Project	0	0	0	0%	650	0	0
Lismore Levee Programme	0	0	4,000	N/A	0	0	0
Local Government Development Programme	625	0	0	0%	0	0	0
Total	1,404,309	1,462,532	1,550,564	6%	1,615,502	1,633,406	1,676,964
Total Administered Programme Group 1	1,504,684	1,601,563	1,793,543	12%	1,802,418	1,782,526	1,768,969

TABLE 2.2: OPERATING EXPENSES - ADMINISTERED PROGRAMMES (continued)

	2000-01	2001-02	2001-02 Revised Budget	Variance ^(a)	2002-03	2003-04	2004-05
	Actual \$'000	Budget \$'000	Budget \$'000		Estimate \$'000	Estimate \$'000	Estimate \$'000
Administered Programme Group 2: Services for Industry Administered on Behalf of the Commonwealth							
2.1 Services for Industry and Economic Development							
Payments to MIFCo (c)	475	193	223	16%	195	195	195
Tasmanian Freight Equalisation Scheme	68,811	65,650	72,300	10%	71,000	71,000	71,000
Supermarket to Asia	900	167	167	0%	0	0	0
Upgrade of the Mainline Interstate Railway Track	46,099	14,585	52,375	100%	0	0	0
Management of residual issues of former Australian National Railway Commission (AN)	2,510	4,600	5,100	11%	1,000	500	500
International Civil Aviation Organisation - contribution	1,508	1,502	1,564	4%	1,564	1,564	1,564
OECD Road Transport - contribution	32	40	40	0%	40	40	40
National Road Transport Commission	1,239	1,240	1,240	0%	1,240	620	0
International Maritime Organisation - contribution	237	300	300	0%	300	300	300
Upgrade of Canberra Airport to international wide-bodied jet standard	3,175	0	5,625	N/A	0	0	0
Tamworth Australasian-Pacific Aeronautical College	0	0	1,450	N/A	942	1,040	230
Payment Scheme For Airservices Australia's Enroute Charges	0	0	2,900	N/A	0	0	0
Australia's response to foot and mouth disease and other quarantine risks	0	0	19,400	N/A	0	0	0
Ex-gratia Disaster Relief Package - Sugar Industry Assistance (b)	0	0	2,940	N/A	0	0	0
Total	124,986	88,277	165,624	88%	76,281	75,259	73,829
2.2 Grants to States/Territories and Local Government							
National Highway and Roads of National Importance	834,925	1,032,184	1,031,174	0%	1,068,229	1,010,088	1,018,979
Roads to Recovery Programme	33,661	300,000	416,339	39%	300,000	300,000	150,000
Roads to Recovery Programme - Indian Ocean Territories and unincorporated areas	0	2,158	2,158	0%	2,158	2,158	2,080
Interstate Road Transport Fees	26,615	27,100	30,100	11%	30,100	30,100	30,100
Alice Springs to Darwin Rail Link	0	55,000	65,000	18%	5,050	8,850	0
Federation Fund Projects	11,264	110,530	120,730	9%	69,100	0	0
Tasmanian Rail Track Upgrading	1,000	0	0	0%	0	0	0
Upgrade of Rockhampton Airport Runway	6,000	0	0	0%	0	0	0
Total	913,465	1,526,972	1,665,501	9%	1,474,637	1,351,196	1,201,159
Total Administered Programme Group 2	1,038,451	1,615,249	1,831,125	13%	1,550,918	1,426,455	1,274,988
Expenses not allocated to programs							
Depreciation	723	685	642	-6%	641	641	641
Net write down of assets	542,860	0	0	0%	0	0	0
Total expenses not allocated to programs	543,583	685	642	-6%	641	641	641
Total Administered Operating Expenses	3,086,718	3,217,497	3,625,310	13%	3,353,977	3,209,622	3,044,598

Notes:

- (a) Variance represents percentage change in 2001-02 revised budget over the 2001-02 Budget.
- (b) Functions transferred to the Department in the 2001 Administrative Arrangements Order.
- (c) The estimates represent expenses relating to the administration costs of the programme. The expenses relating to the actual Payments to MIFCo have been recognised in previous years, while the cash payments of around \$30m are recognised each year.

TABLE 2.3: OPERATING EXPENSES - PRICE OF OUTPUTS

		2000-01	2001-02	2001-02	Variance ^(b)
		Actual	Budget	Revised	
		\$'000	\$'000	Budget ^(a)	
				\$'000	
Output Group 1	<i>Transport systems which are safer, more efficient, internationally competitive, sustainable and accessible</i>	86,462	96,026	95,932	0%
1.1	Policy Advice & Legislation, Ministerial Services	28,355	41,408	35,177	-15%
1.2	Regulations and Standards	21,071	21,225	19,562	-8%
1.3	Safety Services	19,493	17,676	11,907	-33%
1.4	Services to Industry	9,793	8,454	9,564	13%
1.5	Services to Communities	1,546	1,582	7,643	100%
1.6	Research and Data	6,203	5,681	12,079	100%
Output Group 2	<i>Regional communities which have better access to opportunities and services and which are able to take the lead in their own planning and development</i>	24,343	21,441	45,730	100%
2.1	Policy Advice & Legislation, Ministerial Services	6,918	6,067	6,781	12%
2.2	Services to Communities	15,240	13,439	38,163	100%
2.3	Research and Data	2,185	1,935	165	-91%
2.4	Natural Disaster Relief Arrangements	0	0	621	N/A
Output Group 3	<i>Local Governments which serve their communities more effectively and efficiently</i>	3,896	3,412	2,548	-25%
3.1	Policy Advice & Legislation, Ministerial Services	1,781	1,560	1,271	-19%
3.2	Services to Local Governments	2,115	1,852	1,277	-31%
Output Group 4	<i>Territories in which residents will have the same opportunities and responsibilities as other Australians enjoy in comparable communities</i>	96,579	88,335	93,936	6%
4.1	Policy Advice & Legislation, Ministerial Services	4,607	4,296	5,917	38%
4.2	Services to Territory Communities	91,972	84,039	88,019	5%
Price of Outputs		211,280	209,214	238,146	14%
Less: Receipts from Independent Sources		20,583	9,369	12,348	32%
Price to Government (Appropriation) for Outputs		190,697	199,845	225,798	13%

Notes:

(a) The Revised Budget price of outputs reflects adjustments as per Additional Estimates, Administrative Arrangements Orders, and variances across outputs as a result of the refinement of internal costing mechanisms (due to implementation of an activity based costings system) and budgetary updates.

(b) Variance represents percentage change in 2001-02 Revised Budget over the 2001-02 Budget.

TABLE 2.4: CAPITAL RESOURCES

	2000-01	2001-02	2001-02 Revised Budget	Variance ^(a)	2002-03	2003-04	2004-05
	Actual \$'000	Budget \$'000	Budget \$'000		Estimate \$'000	Estimate \$'000	Estimate \$'000
CAPITAL RESOURCES							
<u>Administered Capital Injections</u>							
1. Administered capital injections							
Loan to Norfolk Island Government - Cascade Cliff Safety Project	359	0	371	N/A	0	0	0
Sydney West Airports - Land Acquisition and Works	0	0	2,799	N/A	0	0	0
Australian Rail Track Corporation Equity Injection	0	0	0	0%	111,000	0	0
Natural Disaster Relief Arrangements (b)	0	0	4,564	N/A	5,000	5,000	5,000
2. Administered items expensed but unspent in 1998-99							
Local Government Development Programme (c)	110	0	0	0%	0	0	0
Rail Reform (c)	145	0	0	0%	0	0	0
Total	614	0	7,734	N/A	116,000	5,000	5,000
<u>Departmental Capital Injections</u>							
Capital Works	4,151	0	3,800	N/A	53,600	11,200	0
Appropriation of Previous Years Carryover	678	0	0	0%	0	0	0
Total	4,829	0	3,800	N/A	53,600	11,200	0

Notes:

- (a) Variance represents percentage change in 2001-02 revised budget over the 2001-02 Budget.
(b) Functions transferred to the Department in the 2001 Administrative Arrangements Order.
(c) Additional appropriation was not sought for these items. Resources for these activities were funded through drawdown against appropriation receivable in 2000-01.

PERFORMANCE INFORMATION

Performance information for the programmes administered by the Department and for the Department's outputs is intended to provide the basis against which the Department's performance will be assessed in its Annual Report to Parliament.

ADMINISTERED PROGRAMME PERFORMANCE INFORMATION

The administered programmes contribute to the achievement of the Department's key strategies set out on pages 21 to 25 of the 2001-02 Portfolio Budget Statements.

Revised performance information is provided only for programmes where the performance information (excluding changes in cost) has been revised since the 2001-02 Portfolio Budget Statements.

Administered Programme Group 1 – Services for Communities Administered on Behalf of the Commonwealth

To assist readers in understanding where programme responsibility lies within the Department, the responsible Division has been identified against each programme item.

Group 1.1 - Services for Communities

These are programmes designed to provide services and grant funds to assist the social and economic capacity of Australian communities.

Table 2.5: Performance information for Administered Programme Group 1.1

<i>Programme</i>	<i>Performance Indicators</i>
<p>Ansett – Rapid Route Recovery Scheme New Measure (<i>Transport Programmes Division</i>)</p>	<p><i>Effectiveness:</i> Provide transitional support for the continuation of services to regional communities following the demise of Ansett Airlines.</p> <p><i>Quality:</i> The recommencement of air services to communities affected following the demise of the Ansett Group or an Ansett-related service.</p> <p><i>Quantity:</i> 18 recipients servicing locations in all States and Territories.</p> <p><i>Cost:</i> \$30m.</p> <p><i>Location:</i> Throughout Australia</p>
<p>Relief for Stranded Ansett Passengers New Measure (<i>Transport Programmes Division</i>)</p>	<p><i>Effectiveness:</i> Provide financial assistance to stranded passengers.</p> <p><i>Cost:</i> \$19.1m</p> <p><i>Location:</i> Throughout Australia</p>

Programme	Performance Indicators
<p>Sustainable Regions Programme New Measure (Regional Programmes Division)</p>	<p><i>Effectiveness:</i> Local advisory committees in specific regions undergoing major economic, social or environmental change develop local strategies to enhance the sustainability of those programmes.</p> <p><i>Quality:</i></p> <ul style="list-style-type: none"> • Stakeholder satisfaction with the programme. • Improved cross portfolio and jurisdictional co-operation in addressing regional priorities. <p><i>Cost:</i> \$5.5m</p> <p><i>Location:</i> Throughout Australia</p>
<p>Structural Adjustment Programme for the Wide Bay Burnett Region in Queensland New Measure (Regional Programmes Division)</p>	<p><i>Effectiveness:</i> Contribution to regional job creation and the economic diversification of the Wide Bay Burnett region.</p> <p><i>Cost:</i> \$4m</p> <p><i>Location:</i> Wide Bay Burnett region of Queensland.</p>
<p>Ex-gratia Disaster Relief Packages – 2001 Bushfire Relief Appeal New Measure (Territories & Local Government Division)</p>	<p><i>Effectiveness:</i> Contribution to NSW bushfire disaster relief appeal.</p> <p><i>Cost:</i> \$1m</p> <p><i>Location:</i> New South Wales</p>
<p>Ex-gratia Disaster Relief Packages – Helitankers New Measure (Territories & Local Government Division)</p>	<p><i>Effectiveness:</i> Contribution to combating the Christmas 2001 bushfire crisis.</p> <p><i>Cost:</i> \$0.8m</p> <p><i>Location:</i> New South Wales</p>
<p>Regional Assistance Programme Administrative Arrangements Order (Regional Programmes Division)</p>	<p><i>Effectiveness:</i> Improved opportunities for sustainable employment, regional development and the enhancement of the skills base of regions including the Area Consultative Committee network.</p> <p><i>Quality:</i> Stakeholder satisfaction with programme.</p> <p><i>Quantity:</i> Number and geographic spread of grants approved.</p> <p><i>Cost:</i> \$24.2m</p> <p><i>Location:</i> Regional, rural, remote and metropolitan regions.</p>

<i>Programme</i>	<i>Performance Indicators</i>
<p>Dairy Regional Assistance Programme</p> <p>Administrative Arrangements Order</p> <p>(Regional Programmes Division)</p>	<p><i>Effectiveness:</i> Improved opportunities for sustainable employment and regional development in dairy regions impacted upon by dairy deregulation.</p> <p><i>Quality:</i> Stakeholder satisfaction with programme.</p> <p><i>Quantity:</i> Number and geographic spread of grants approved.</p> <p><i>Cost:</i> \$17.9m</p> <p><i>Location:</i> Dairy communities throughout Australia.</p>
<p>Flood Assistance Package – Small Business Grants</p> <p>Rephasing from 2000-01</p> <p>(Territories & Local Government Division)</p>	<p><i>Effectiveness:</i> Provision of assistance to small businesses affected by the major flood events of November 2000 and January to March 2001.</p> <p><i>Quality:</i> Reduced number of businesses failing due to the floods.</p> <p><i>Cost:</i> \$2.6m</p> <p><i>Location:</i> Central and northern NSW and southern Queensland</p>
<p>Compensation payments to SACL for the sale of Sydney Airport land</p> <p>Rephasing from 2000-01. Programme is offset by proceeds from the sale of the land.</p> <p>(Transport Regulation Division)</p>	<p><i>Effectiveness:</i> Compensation to SACL for land sold to NSW State Government to enable completion of the M5 motorway.</p> <p><i>Cost:</i> \$2m</p>
<p>Sydney West Airport</p> <p>Rephasing from 2000-01</p> <p>(Transport Regulation Division)</p>	<p><i>Effectiveness:</i> Resolution of compensation claims related to the purchase of land at the possible Sydney West Airport site at Badgery's Creek.</p> <p><i>Quantity:</i> Settlements for 3 properties.</p> <p><i>Cost:</i> \$0.1m (plus \$2.8m equity injections).</p>
<p>Rural Domestic Violence</p> <p>Rephasing from 2000-01</p> <p>(Regional Programmes Division)</p>	<p><i>Effectiveness:</i> Improved understanding of the incidence and reduction of domestic violence in regional and rural Australia.</p> <p><i>Cost:</i> \$0.1m</p> <p><i>Location:</i> Regional, rural and remote Australia.</p>

<i>Programme</i>	<i>Performance Indicators</i>
<p>Remote Air Service Subsidy Scheme (RASS)</p> <p>Revised quantity performance information</p> <p><i>(Regional Programmes Division)</i></p>	<p><i>Effectiveness:</i> Provide subsidised air services where there are no alternative forms of transport, to enable access to passenger transport, goods delivery and other transport needs.</p> <p><i>Quantity:</i> Contracts with up to 8 operators servicing up to 10 regions.</p> <p><i>Cost:</i> \$2.9m</p> <p><i>Location:</i> Queensland, Northern Territory, Western Australia and South Australia.</p>

Group 1.2 – Grants to State/Territories and Local Government

These are programmes that are designed to provide services and grant funds to States/Territories and Local Governments to assist the social and economic capacity of Australian communities.

Table 2.6: Performance information for Administered Programme Group 1.2

<i>Programme</i>	<i>Performance Indicators</i>
<p>Lismore Levee Programme New Measure <i>(Territories & Local Government Division)</i></p>	<p><i>Effectiveness:</i> Acceleration of the construction of the Lismore Levee.</p> <p><i>Quality:</i> A reduction in average annual flood damage in Lismore.</p> <p><i>Quantity:</i> Increased number of properties protected from major flood events.</p> <p><i>Cost:</i> \$4m</p> <p><i>Location:</i> Lismore, NSW.</p>
<p>Natural Disaster Relief Arrangements Administrative Arrangements Order <i>(Territories & Local Government Division)</i></p>	<p><i>Effectiveness:</i> Reduction in financial burden on States and Territories for eligible disaster relief measures.</p> <p><i>Quality:</i> Stakeholder satisfaction and support of the arrangements.</p> <p><i>Cost:</i> \$65.7m</p>
<p>Natural Disaster Risk Management Studies Programme Administrative Arrangements Order <i>(Territories & Local Government Division)</i></p>	<p><i>Effectiveness:</i> Increased commitment by all levels of government to the mitigation of the impact of natural disasters.</p> <p><i>Quality:</i> Stakeholder satisfaction and support of the programmes.</p> <p><i>Cost:</i> \$3m</p>
<p>Local Government Incentive Programme Rephasing from 2000-01 <i>(Territories & Local Government Division)</i></p>	<p><i>Effectiveness:</i> Enhanced capacity of local government's to contribute to the achievement of national priorities.</p> <p><i>Quantity:</i> 55 projects funded.</p> <p><i>Cost:</i> \$3.3m</p> <p><i>Location:</i> Regional, rural and remote Australia.</p>

Administered Programme Group 2 – Services for Industry Administered on Behalf of the Commonwealth

Group 2.1 - Services for Industry and Economic Development

These are programmes that are designed to provide services and grant funds to assist industry to develop and maintain transportation infrastructure. Many of these programmes also assist communities through economic and infrastructure development.

Table 2.7: Performance information for Administered Programme Group 2.1

Programme	Performance Indicators
<p>Tamworth Australasian-Pacific Aeronautical College</p> <p>New Measure (Transport Programmes Division)</p>	<p><i>Effectiveness:</i> Provide additional aircraft maintenance engineering training in regional Australia.</p> <p><i>Quantity:</i> Additional students complete aircraft maintenance engineering training.</p> <p><i>Cost:</i> \$1.5m</p> <p><i>Location:</i> Tamworth, NSW.</p>
<p>Payment Scheme For Airservices Australia's Enroute Charges</p> <p>New Measure (Transport Programmes Division)</p>	<p><i>Effectiveness:</i> Provide subsidised charges for low capacity regular public transport airlines on regional routes, and those providing aeromedical services.</p> <p><i>Quantity:</i> Subsidy provided to approximately 30 operators.</p> <p><i>Cost:</i> \$2.9m</p> <p><i>Location:</i> Regional, rural and remote Australia.</p>
<p>Australia's response to foot and mouth disease and other quarantine risks – Airport Quarantine Infrastructure Programme</p> <p>New Measure – foreshadowed in 2001-02 Portfolio Budget Statements (Transport Programmes Division)</p>	<p><i>Effectiveness:</i> Improved international airport infrastructure to facilitate increased quarantine intervention.</p> <p><i>Quality:</i> Enable increase in quarantine intervention rates at international airports for arriving passengers and baggage.</p> <p><i>Cost:</i> \$19.4m</p> <p><i>Location:</i> Sydney, Melbourne, Brisbane, Cairns, Adelaide, Perth, Darwin</p>
<p>Ex-gratia Disaster Relief Packages – Sugar Industry</p> <p>Administrative Arrangements Order (Territories & Local Government Division)</p>	<p><i>Effectiveness:</i> Provision of income support for sugar cane growers during a period of market downturn and crop degradation.</p> <p><i>Cost:</i> \$2.9m</p> <p><i>Location:</i> Queensland, Northern New South Wales and Western Australia.</p>

<i>Programme</i>	<i>Performance Indicators</i>
<p>Upgrade of Canberra Airport to international wide-bodied jet standard</p> <p>Rephasing from 2000-01</p> <p><i>(Transport Programmes Division)</i></p>	<p><i>Effectiveness:</i> Improved infrastructure at Canberra Airport to accommodate wide-bodied jet aircraft.</p> <p><i>Cost:</i> \$5.6m</p> <p><i>Location:</i> ACT</p>

DEPARTMENT OUTPUTS PERFORMANCE INFORMATION

The performance information for Departmental Outputs remain those specified in the 2001-02 Portfolio Budget Statements other than minor changes to the price indicators following determination of final Departmental budget allocations as shown in Table 2.3 and the creation of a new output under Output Group 2 titled Natural Disaster Relief Arrangements. Accordingly, revised performance information is provided only for this new output.

To assist readers to understand where responsibility for the delivery of departmental outputs lies within the Department, the relevant divisions and bureaus are identified under each output in the performance information table for each output group.

Output Group 2: Regional communities which have better access to opportunities and services and which are able to take the lead in their own planning and development.

Natural Disaster Relief Arrangements

The Department provides effective and efficient administration of Natural Disaster Relief Programmes for communities on behalf of its Ministers, including Natural Disaster Relief Arrangements, Natural Disaster Risk Management Studies Programme, Ex-gratia Disaster Relief Packages, and National Disaster Memorials.

Table 2.8: Performance information for Output Group 2

<i>Output</i>	<i>Performance Indicators</i>
2.4 Natural Disaster Relief Arrangements <i>(Territories & Local Government Division)</i>	<i>Quality:</i> <ul style="list-style-type: none"> • Administration of programmes in accordance with the Natural Disaster Relief Arrangements Determination and associated programme guidelines. • Department ensures that funding recipients meet terms and conditions of funding. • Where appropriate, stakeholder satisfaction with programmes. • Improved cross portfolio and jurisdictional cooperation. <i>Price: \$0.6m</i>

SECTION 3

Budgeted Financial Statements

SUMMARY OF PLANNED FINANCIAL PERFORMANCE

An overview of the Department's budgeted financial performance, as reflected in the Department's budgeted departmental financial statements and administered notes for 2001-02, is provided below. The Department's budgeted financial statements are set out at page 56.

Departmental

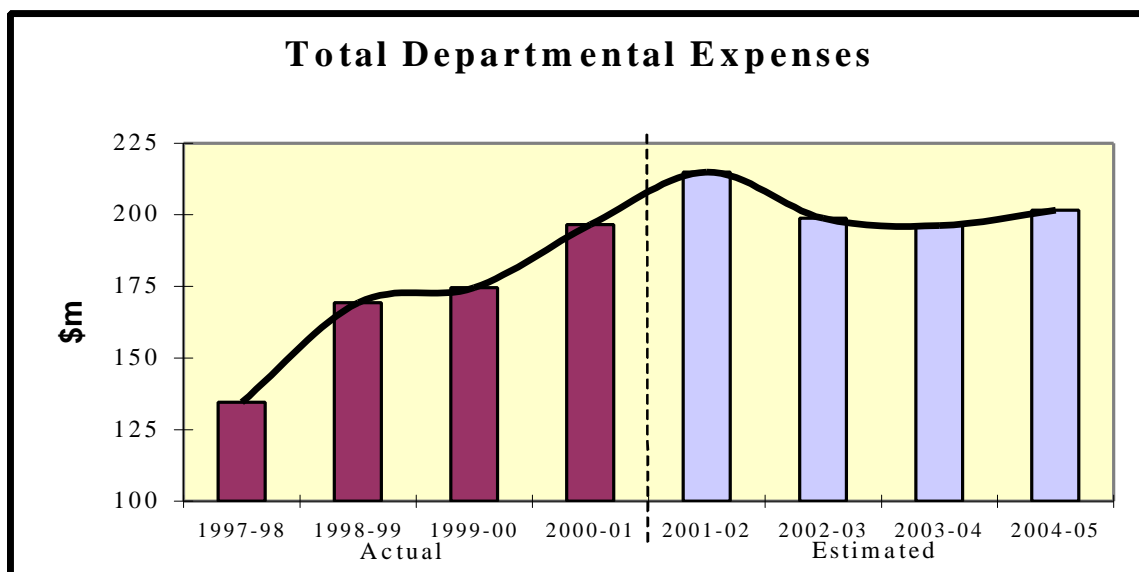
Statement of Financial Performance

The Department is budgeting for an operating surplus of \$23.2m for 2001-02 before payment of the Capital Use Charge (CUC) of \$23.6m.

Total appropriation revenue is estimated to be \$225.8m, an increase of \$26m from Budget. The increase is as a result of:

- funding for the following new measures: Stronger Regions Programme (\$11.2m); Ansett-Rapid Route Recovery (\$1.4m); Ansett – Assistance to stranded passengers (\$1.9m); Additional funding to address unauthorised arrivals (\$0.4m) and the Australasian-Pacific Aeronautical College (\$0.2m);
- transfer of funding from the Department of Employment and Workplace Relations and the Department of Finance and Administration as a result of the 2001 Administrative Arrangements Order (\$7.4m);
- additional funding for the legal and insolvency costs associated with the demise of Ansett (\$1.5m);
- parameter adjustments for Indian Ocean Territory services (\$1.2m); and
- additional funding for the Capital Use Charge (\$0.8m).

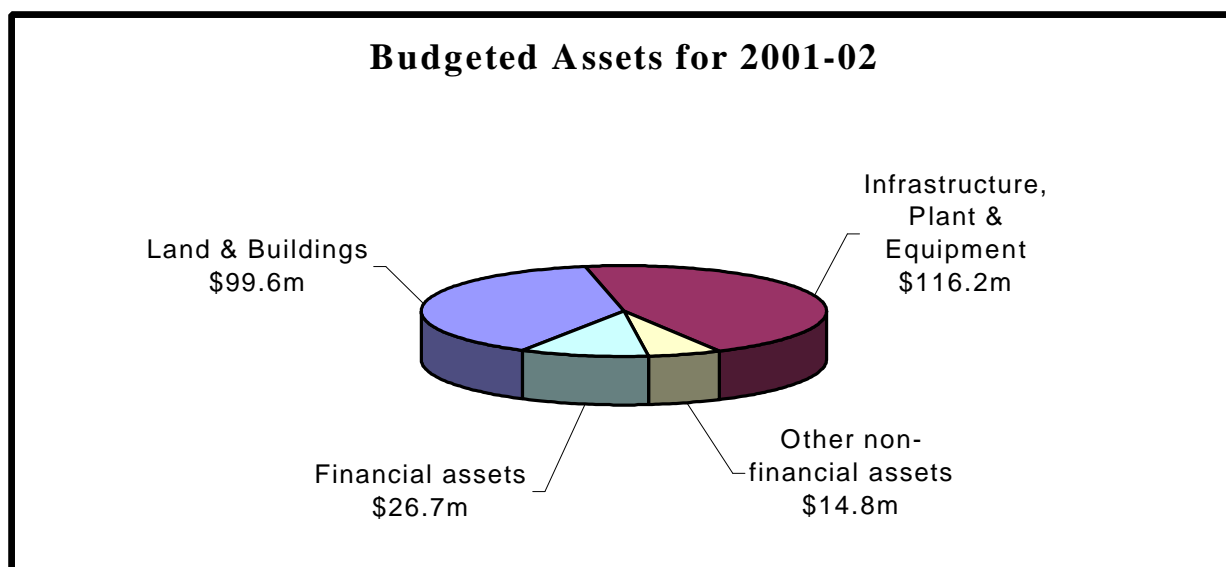
Total expenses are estimated to be \$214.9m, an increase of \$28.1m from Budget. The increase is due to the impact of the issues detailed above.



Note: Changes from 1997-98 to 1998-99 are due to increased functions arising from Administrative Arrangements Orders.

Statement of Financial Position

The Department's revised budgeted net asset position of \$217.1m, represents an increase of \$10.4m since Budget. The increase is due to an increase in financial assets (\$9.2m) and non-financial assets (\$6.4m), offset by a decrease in liabilities (\$5.3m). The Department's primary asset, 'Infrastructure, plant and equipment', is projected to decrease by \$5.1m to \$116.2m due to the transfer of completed work in progress to other asset categories.



The Department's primary liability continues to be accrued employee entitlements, estimated to be \$27.3m by the end of the fiscal year.

Administered

Statement of Financial Performance

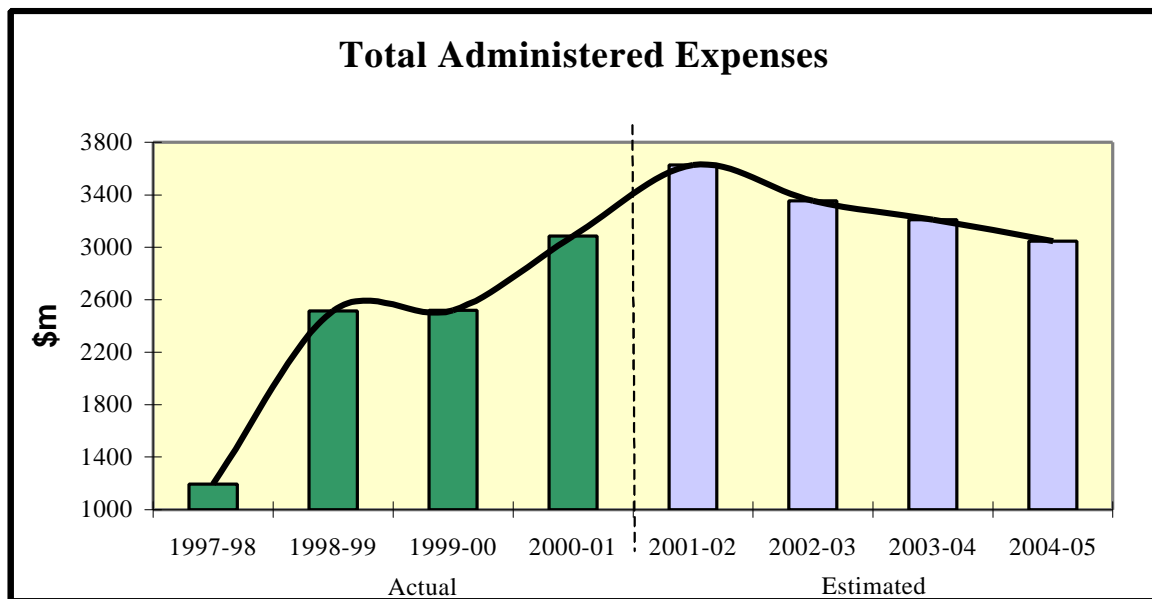
The Department will receive appropriation revenue of \$3,426.2m for payments it will administer on behalf of the Government, representing an increase of \$344.4m from Budget. The increase is mainly due to:

- the transfer of programmes in the 2001 Administrative Arrangements Orders, namely Natural Disaster Relief Arrangements (\$68.7m), Ex-gratia Disaster Relief Package – Sugar Industry (\$2.9m), Regional Assistance Programme (\$24.2m) and Dairy Regional Assistance Programme (\$17.9m);
- funding for new measures, primarily Ansett – Rapid Route Recovery (\$30m), Relief for Stranded Ansett Passengers (\$19.1m), Sustainable Regions Programme (\$5.5m) and Structural Adjustment Package for the Wide Bay Burnett region (\$4m);
- rephasings of funding for programmes from 2000-01 to 2001-02 (\$41m); and
- a change in the accounting treatment for special accounts in accordance with revised guidance for all Government departments from the Australian National Audit Office and the Department of Finance and Administration (\$128.9m).

The Department will also administer the collection of taxes, fees and fines, other non-taxation revenue and interest and dividends estimated at \$328m, representing an increase of \$94.8m since Budget. The increase is mainly due to:

- the introduction of the Air Passenger Ticket Levy (\$73.8m); and
- the transfer of the Dairy Regional Assistance Programme reimbursements from the Department of Employment and Workplace Relations as a result of the 2001 Administrative Arrangements Order (\$24.3m).

Administered expenses, such as grants and subsidies programmes, are budgeted at \$3,507.7m, representing an increase of \$346.1m since budget and will be incurred for the programmes set out in Table 2.2. The increase is due to the issues detailed above.



Note: Changes from 1997-98 to 1998-99 are due to increased functions arising from Administrative Arrangements Orders.

Statement of Financial Position

Total assets are expected to decrease by \$11.4m from Budget to \$1,385.3m. The decrease is a result of the flow-on effects of the 2000-01 audited results.

Total liabilities are expected to increase by \$17.6m from Budget to \$114.9m. The increase is mostly attributable to grants payable attributable to the Local Government Financial Assistance Grants programme (\$12.5m).

BUDGETED FINANCIAL STATEMENTS

The budgeted financial statements comprise full financial statements for the Department and budgeted estimates in tabular form for administered items. Together, these show the planned financial performance for the 2001-02 Budget year and each of the forward years from 2002-03 to 2004-05. The statements also include the 2000-01 actuals and 2001-02 budget estimates for comparative purposes.

The budgeted statements contain estimates prepared in accordance with the requirements of the Government's financial budgeting and reporting framework, including the principles of Australian Accounting Standards and Statements of Accounting Concepts, as well as specific guidelines issued by the Department of Finance and Administration.

Departmental Statements

Table 3.1 – Budgeted Departmental Statement of Financial Performance

This statement provides a picture of the expected financial results for the Department by identifying full accrual expenses, revenues and the capital use charge, which highlights whether the Department is operating at a sustainable level.

Table 3.2 – Budgeted Departmental Statement of Financial Position

This statement shows the financial position of the Department. It enables decision-makers to track the management of the Department's assets and liabilities.

Table 3.3 – Budgeted Departmental Statement of Cash Flows

Budgeted cash flows provide important information on the extent and nature of cash flows by categorising them into expected cash flows from operating activities, investing activities and financing activities.

Table 3.4 – Budgeted Departmental Capital Budget Statement

This statement shows all planned departmental capital expenditure on non-financial assets, whether funded through capital appropriations for additional equity or borrowings, or from internal sources.

Table 3.5 – Departmental Non-financial Assets – Summary of Movement

Shows budgeted acquisitions and disposals of non-financial assets during the budget year.

Administered Notes

Table 3.6 – Note of Budgeted Administered Financial Performance

This note identifies the main revenues and expenses administered on behalf of the Government. It also discloses administered revenues from Government and transfers to the Official Public Account.

Table 3.7 – Note of Budgeted Administered Financial Position

This note identifies the value of assets and liabilities administered on behalf of the Government.

Table 3.8 – Note of Budgeted Administered Cash Flows

This note shows cash flows administered on behalf of the Government.

Table 3.9 – Note of Budgeted Administered Capital Budget

This note shows details of planned administered capital expenditure.

Table 3.10 – Note of Budgeted Administered Non-financial Assets – Summary of Movement

This note discloses details of movements in administered non-financial assets.

Table 3.11 – Note of Administered Receipts (Other than Appropriations)

This note shows the projected administered receipts.

Notes to the Budgeted Financial Statements

TABLE 3.1: BUDGETED DEPARTMENTAL STATEMENT OF FINANCIAL PERFORMANCE								
	Notes	2000-01 Actual \$'000	2001-02 Budget \$'000	2001-02 Revised Budget \$'000	Variance %	2002-03 Estimate \$'000	2003-04 Estimate \$'000	2004-05 Estimate \$'000
REVENUES								
Revenue from Independent Sources		20 583	9 369	12 348	32%	10 070	10 068	10 224
Appropriations (Price of Outputs)		190 697	199 845	225 798	13%	212 622	215 983	222 381
TOTAL REVENUE	3	211 280	209 214	238 146	14%	222 692	226 051	232 605
EXPENSES								
Employees	4	68 775	70 995	75 638	7%	77 658	76 184	76 311
Suppliers	5	86 221	102 132	125 603	23%	107 269	105 764	110 518
Depreciation & amortisation	6	11 953	13 349	13 349	0%	13 791	14 233	14 674
Net write-down of assets		16 299	0	0	0%	0	0	0
Net loss from disposal of assets	7	2 463	346	346	0%	0	0	0
Other		10 887	0	0	0%	0	0	0
TOTAL EXPENSES		196 598	186 822	214 936	15%	198 718	196 181	201 503
NET SURPLUS OR DEFICIT		14 682	22 392	23 210	4%	23 974	29 870	31 102
Capital Use Charge (CUC)	8	(26 502)	(22 738)	(23 556)	4%	(23 974)	(29 870)	(31 102)
NET SURPLUS OR DEFICIT AFTER CUC		(11 820)	(346)	(346)	0%	0	0	0
Accumulated funds at Beginning of Year		179 803	162 871	167 983	3%	167 637	167 637	167 637
ACCUMULATED FUNDS AT END OF YEAR		167 983	162 525	167 637	3%	167 637	167 637	167 637

TABLE 3.2: BUDGETED DEPARTMENTAL STATEMENT OF FINANCIAL POSITION								
	Notes	2000-01 Actual \$'000	2001-02 Budget \$'000	2001-02 Revised Budget \$'000	Variance %	2002-03 Estimate \$'000	2003-04 Estimate \$'000	2004-05 Estimate \$'000
ASSETS								
FINANCIAL ASSETS								
Cash		3 781	1 232	5 051	100%	5 051	5 051	5 051
Receivables		3 866	2 249	3 063	36%	3 058	3 058	3 058
Investments		33 000	13 252	15 641	18%	12 988	11 028	9 474
Accrued Revenues		2 980	766	2 980	100%	2 980	2 980	2 980
Total Financial Assets	9	43 627	17 499	26 735	53%	24 077	22 117	20 563
NON-FINANCIAL ASSETS								
Land & Buildings		100 590	93 217	99 624	7%	98 657	97 690	96 723
Infrastructure, Plant & Equipment		99 701	121 419	116 231	-4%	175 304	191 281	195 083
Intangibles		4 109	2 381	10 290	100%	9 151	8 033	7 449
Inventories		2 063	2 450	2 063	-16%	2 063	2 063	2 063
Other		2 414	4 731	2 414	-49%	2 414	2 414	2 414
Total Non-Financial Assets	10	208 877	224 198	230 622	3%	287 589	301 481	303 732
TOTAL ASSETS		252 504	241 697	257 357	6%	311 666	323 598	324 295
LIABILITIES								
DEBT								
Other		2 580	1 277	2 277	78%	1 974	1 671	1 368
Total Debt	11	2 580	1 277	2 277	78%	1 974	1 671	1 368
PROVISIONS & PAYABLES								
Employee		22 786	27 295	25 354	-7%	26 371	27 406	28 406
Suppliers		11 747	5 678	11 734	100%	11 729	11 729	11 729
Other		896	738	898	22%	898	898	898
Total Provisions & Payables	12	35 429	33 711	37 986	13%	38 998	40 033	41 033
Total Liabilities		38 009	34 988	40 263	15%	40 972	41 704	42 401
EQUITY								
Total Accumulated Results		167 983	162 525	167 637	3%	167 637	167 637	167 637
Total Reserves		12 287	9 959	12 287	23%	12 287	12 287	12 287
Total Capital		34 225	34 225	37 170	9%	90 770	101 970	101 970
Total Equity		214 495	206 709	217 094	5%	270 694	281 894	281 894
TOTAL LIABILITIES & EQUITY		252 504	241 697	257 357	6%	311 666	323 598	324 295
Current Liabilities		35 683	33 711	37 986		38 998	40 033	41 033
Non-current Liabilities		2 326	1 277	2 277		1 974	1 671	1 368
Current Assets		48 104	24 680	31 212		28 554	26 594	25 040
Non-current Assets		204 400	217 017	226 145		283 112	297 004	299 255

TABLE 3.3: BUDGETED DEPARTMENTAL STATEMENT OF CASH FLOWS							
	2000-01	2001-02	2001-02 Revised Budget		2002-03	2003-04	2004-05
	Actual	Budget		Variance	Estimate	Estimate	Estimate
	\$'000	\$'000	\$'000	%	\$'000	\$'000	\$'000
OPERATING ACTIVITIES							
Cash received							
Revenue from Independent Sources	16 988	9 381	12 360	32%	10 075	10 068	10 224
Appropriation Receipts	190 482	199 845	225 798	13%	212 622	215 983	222 381
GST Input Credit Receipts	4 730	4 411	4 411	0%	4 164	4 183	4 326
GST Receipts from Customers	0	200	200	0%	200	200	200
Total Cash Received	212 200	213 837	242 769	14%	227 061	230 434	237 131
Cash used							
Payments to Employees	69 602	69 941	74 105	6%	76 641	75 149	75 311
Payments to Suppliers	77 343	102 144	125 615	23%	107 274	105 764	110 518
Other	13 417	649	649	0%	303	303	303
GST Payment to Suppliers	5 937	4 611	4 611	0%	4 364	4 383	4 526
Total Cash Used	166 299	177 345	204 980	16%	188 582	185 599	190 658
NET CASH FROM OPERATING ACTIVITIES	45 901	36 492	37 789	4%	38 479	44 835	46 473
INVESTING ACTIVITIES							
Cash received							
Proceeds from sales of PP&E and intangibles	1 660	0	0	0%	0	0	0
Cash Received - Other Investing Activities	0	8 276	17 359	100%	2 653	1 960	1 554
Total Cash Received	1 660	8 276	17 359	100%	2 653	1 960	1 554
Cash used							
Purchase of PP&E and Intangibles	24 427	22 030	34 913	58%	70 758	28 125	16 925
Total Cash Used for Investing Activities	24 427	22 030	34 913	58%	70 758	28 125	16 925
NET CASH FROM INVESTING ACTIVITIES	(22 767)	(13 754)	(17 554)	28%	(68 105)	(26 165)	(15 371)
FINANCING ACTIVITIES							
Cash received							
Capital Injections	4 829	0	3 800	N/A	53 600	11 200	0
Total Cash Received from Financing Activities	4 829	0	3 800	N/A	53 600	11 200	0
Cash used							
Cash Used for Capital Use Charge	27 914	22 738	22 765	0%	23 974	29 870	31 102
Total Cash Used for Financing Activities	27 914	22 738	22 765	0%	23 974	29 870	31 102
NET CASH FROM FINANCING ACTIVITIES	(23 085)	(22 738)	(18 965)	-17%	29 626	(18 670)	(31 102)
NET (DECREASE) / INCREASE IN CASH HELD	49	0	1 270	N/A	0	0	0
Cash at beginning of year	3 732	1 232	3 781	100%	5 051	5 051	5 051
Cash at end of year	3 781	1 232	5 051	100%	5 051	5 051	5 051

TABLE 3.4: BUDGETED DEPARTMENTAL CAPITAL BUDGET STATEMENT							
	2000-01	2001-02	2001-02 Revised Budget	<i>Variance</i>	2002-03	2003-04	2004-05
	Actual	Budget	\$'000	<i>%</i>	Estimate	Estimate	Estimate
	\$'000	\$'000			\$'000	\$'000	\$'000
CAPITAL APPROPRIATION							
Total Capital Appropriation							
Total Equity Injections	4 829	0	3 800	<i>N/A</i>	53 600	11 200	0
Total Capital Appropriation	4 829	0	3 800	<i>N/A</i>	53 600	11 200	0
Represented by:							
Purchase of non-financial assets	4 829	0	3 800	<i>N/A</i>	53 600	11 200	0
Other items	0	0	0	<i>0%</i>	0	0	0
Total items	4 829	0	3 800	<i>N/A</i>	53 600	11 200	0
PURCHASE OF NON-CURRENT ASSETS							
Funded by Capital Appropriation	4 829	0	3 800	<i>N/A</i>	53 600	11 200	0
Funded Internally by Department resources	19 598	22 030	31 113	<i>41%</i>	17 158	16 925	16 925
Total amount funded	24 427	22 030	34 913	<i>58%</i>	70 758	28 125	16 925

TABLE 3.5: DEPARTMENTAL NON-FINANCIAL ASSETS - SUMMARY OF MOVEMENT (Budget Year 2001-02)						
	Land	Buildings	Total Land & Buildings	Infrastructure, Plant & Equipment	Intangibles	TOTAL
	\$'000	\$'000	\$'000	\$'000	\$'000	\$'000
Gross value						
Actual at 1 July 2001 (opening)	4 674	97 089	101 763	101 669	5 456	208 888
Additions *	0	0	0	27 593	7 320	34 913
Disposals	0	0	0	0	0	0
Other movements	0	0	0	349	0	349
As at 30 June 2002 (closing)	4 674	97 089	101 763	129 611	12 776	244 150
Accumulated Depreciation/ Amortisation						
As at 1 July 2001 (opening)	0	1 174	1 174	1 968	1 347	4 489
Disposals	0	0	0	0	0	0
Charge for the reporting period	0	967	967	11 243	1 139	13 349
Other movements	0	0	0	169	0	169
As at 30 June 2002 (closing)	0	2 141	2 141	13 380	2 486	18 007
Net book value as at 30 June 2002 (closing book value)	4 674	94 948	99 622	116 231	10 290	226 143
Net book value as at 1 July 2001 (opening book value)	4 674	95 915	100 589	99 701	4 109	204 399
* TOTAL ADDITIONS						
	Land	Buildings	Total Land & Buildings	Infrastructure, Plant & Equipment	Intangibles	TOTAL
	\$'000	\$'000	\$'000	\$'000	\$'000	\$'000
Self funded	0	0	0	23 793	7 320	31 113
Appropriations	0	0	0	3 800	0	3 800
TOTAL	0	0	0	27 593	7 320	34 913

TABLE 3.6: NOTE OF BUDGETED ADMINISTERED FINANCIAL PERFORMANCE								
Explanatory Information	2000-01	2001-02	2001-02	Variance	2002-03	2003-04	2004-05	
	Actual	Budget	Revised Budget		Estimate	Estimate	Estimate	
	\$'000	\$'000	\$'000		%	\$'000	\$'000	\$'000
REVENUES								
TAXATION								
Taxes, Fees & Fines	169 914	167 752	192 369	15%	226 466	229 386	232 416	
Taxation	169 914	167 752	192 369	15%	226 466	229 386	232 416	
NON-TAXATION								
Sale of Goods and Services	7 238	0	44 785	N/A	45 770	46 502	46 470	
Interest and Dividends	58 526	41 956	53 705	28%	51 168	49 233	47 020	
Other Sources of Non-Taxation Revenue	5 437	23 515	37 129	58%	35 989	11 221	11 357	
Appropriations	2 657 593	3 081 859	3 426 216	11%	3 351 837	3 205 784	3 045 402	
Non-Taxation	2 728 794	3 147 330	3 561 835	13%	3 484 764	3 312 740	3 150 249	
TOTAL REVENUE ADMINISTERED ON BEHALF OF THE GOVERNMENT								
13	2 898 708	3 315 082	3 754 204	13%	3 711 230	3 542 126	3 382 665	
EXPENSES								
GOODS AND SERVICES ITEMS								
Suppliers	41 960	49 116	109 618	100%	73 711	63 019	40 447	
Net write down of assets	542 860	0	0	0%	0	0	0	
Depreciation and amortisation expenses	723	685	642	-6%	641	641	641	
Other Goods & Services Expenses	17 737	6 093	7 337	20%	6 095	6 095	6 095	
Goods and Services	603 280	55 894	117 597	110%	80 447	69 755	47 183	
SUBSIDIES AND GRANTS								
Subsidies	85 365	85 911	95 589	11%	92 242	93 177	93 454	
Grants	2 398 073	3 075 692	3 412 124	11%	3 181 288	3 046 690	2 903 961	
Subsidies and Grants	2 483 438	3 161 603	3 507 713	11%	3 273 530	3 139 867	2 997 415	
TOTAL EXPENSES ADMINISTERED ON BEHALF OF THE GOVERNMENT								
	3 086 718	3 217 497	3 625 310	13%	3 353 977	3 209 622	3 044 598	

TABLE 3.7: NOTE OF BUDGETED ADMINISTERED FINANCIAL POSITION								
	Explanatory Information	2000-01	2001-02	2001-02	Variance	2002-03	2003-04	2004-05
		Actual	Budget	Revised Budget		Estimate	Estimate	Estimate
		\$'000	\$'000	\$'000		\$'000	\$'000	\$'000
ASSETS								
FINANCIAL ASSETS								
Cash		529	649	392	-40%	392	1 606	2 838
Receivables		348 808	345 822	324 288	-6%	275 129	236 247	204 903
Investments		930 624	905 603	900 624	-1%	981 624	961 624	941 624
Accrued Revenue		16 716	7 384	16 716	100%	16 716	16 716	16 716
Financial Assets	16	1 296 677	1 259 458	1 242 020	-1%	1 273 861	1 216 193	1 166 081
NON-FINANCIAL ASSETS								
Land & Buildings		69 794	70 831	72 230	2%	71 867	71 504	71 141
Infrastructure, Plant & Equipment		1	2	0	-100%	0	0	0
Intangibles		4 958	6 235	4 680	-25%	4 402	4 124	3 846
Other		266 505	60 204	66 391	10%	64 251	60 413	61 217
Non-Financial Assets		341 258	137 272	143 301	4%	140 520	136 041	136 204
TOTAL ASSETS ADMINISTERED ON BEHALF OF THE GOVERNMENT		1 637 935	1 396 730	1 385 321	-1%	1 414 381	1 352 234	1 302 285
LIABILITIES								
PROVISIONS & PAYABLES								
Suppliers Payable		16 627	0	0	0%	0	0	0
Subsidies Payable		129 966	97 312	100 697	3%	67 982	33 617	6 471
Grants Payable		8 692	0	12 483	N/A	0	0	0
Other		1 731	0	1 731	N/A	1 731	2 742	3 974
Provisions & Payables		157 016	97 312	114 911	18%	69 713	36 359	10 445
TOTAL LIABILITIES ADMINISTERED ON BEHALF OF THE GOVERNMENT		157 016	97 312	114 911	18%	69 713	36 359	10 445
Current Liabilities		57 050	32 940	46 929		36 096	29 888	10 445
Non-current Liabilities		99 966	64 372	67 982		33 617	6 471	0
Current Assets		204 863	14 246	68 407		59 828	49 666	29 780
Non-current Assets		1 433 072	1 382 484	1 427 914		1 354 553	1 302 568	1 272 505

TABLE 3.8: NOTE OF BUDGETED ADMINISTERED CASH FLOWS							
	2000-01	2001-02	2001-02 Revised Budget	<i>Variance</i>	2002-03	2003-04	2004-05
	Actual	Budget	Budget	<i>%</i>	Estimate	Estimate	Estimate
	\$'000	\$'000	\$'000	<i>%</i>	\$'000	\$'000	\$'000
OPERATING ACTIVITIES							
Cash received							
Taxes Fees & Fines	112 956	116 967	189 791	62%	220 466	223 386	226 416
Interest & Dividends	58 981	41 956	53 705	28%	51 168	49 233	47 020
Appropriation Receipts	2 727 597	3 250 795	3 467 517	7%	3 396 394	3 240 519	3 073 139
Other Non-Taxation Revenues	12 077	23 515	35 029	49%	35 989	11 221	11 357
GST Receipts	0	17 201	10 537	-39%	9 551	9 440	8 765
Total Cash Received	2 911 611	3 450 434	3 756 579	9%	3 713 568	3 533 799	3 366 697
Cash used							
Payments to Suppliers	33 284	48 833	126 234	100%	73 711	63 019	40 447
Subsidies	113 545	117 431	124 858	6%	124 957	127 542	120 600
Grants	2 585 694	3 078 437	3 208 220	4%	3 191 631	3 042 852	2 904 765
Cash to the OPA	184 623	182 436	278 523	53%	307 623	283 840	284 793
Other Cash Used	17 737	6 093	7 348	21%	6 095	6 095	6 095
GST Payments	1 497	17 201	10 515	-39%	9 551	9 237	8 765
Total Cash Used	2 936 380	3 450 431	3 755 698	9%	3 713 568	3 532 585	3 365 465
NET CASH FROM OPERATING ACTIVITIES	(24 769)	3	881	100%	0	1 214	1 232
INVESTING ACTIVITIES							
Cash received							
Equity repayments	40 552	30 000	30 000	0%	30 000	20 000	20 000
Repayment of Advances	5 936	6 615	8 303	26%	9 602	9 955	9 839
Proceeds from sales of land, PP&E and intangibles	0	0	2 100	N/A	0	0	0
Total Cash Received	46 488	36 615	40 403	10%	39 602	29 955	29 839
Cash used							
Cash to Consolidated Revenue Fund	46 358	36 615	40 403	10%	39 602	29 955	29 839
Purchase of Land, PP&E and intangibles	685	0	2 799	N/A	0	0	0
Advances made	359	0	5 953	N/A	5 000	5 000	5 000
Other investing activities	0	0	0	0%	111 000	0	0
Total Cash Used	47 402	36 615	49 155	34%	155 602	34 955	34 839
NET CASH FROM INVESTING ACTIVITIES	(914)	0	(8 752)	N/A	(116 000)	(5 000)	(5 000)
FINANCING ACTIVITIES							
Cash received							
Capital injections	359	0	7 734	N/A	116 000	5 000	5 000
Other financing activities	8 503	0	0	0%	0	0	0
Total Cash Received	8 862	0	7 734	N/A	116 000	5 000	5 000
Cash used							
Cash to Consolidated Revenue Fund	7 043	0	0	0%	0	0	0
Total Cash Used	7 043	0	0	0%	0	0	0
NET CASH FROM FINANCING ACTIVITIES	1 819	0	7 734	N/A	116 000	5 000	5 000
NET (DECREASE)/INCREASE IN CASH HELD	(23 864)	3	(137)	-100%	0	1 214	1 232
Cash at beginning of year	24 393	646	529	-18%	392	392	1 606
Cash at end of year	529	649	392	-40%	392	1 606	2 838

TABLE 3.9: NOTE OF ADMINISTERED CAPITAL BUDGET							
	2000-01	2001-02	2001-02		2002-03	2003-04	2004-05
	Actual	Budget	Revised	<i>Variance</i>	Estimate	Estimate	Estimate
	\$'000	\$'000	Budget	<i>%</i>	\$'000	\$'000	\$'000
			\$'000				
CAPITAL APPROPRIATION							
Administered Capital - Annual Appropriation	359	0	4 564	<i>N/A</i>	116 000	5 000	5 000
Administered Capital - Other	255	0	3 170	<i>N/A</i>	0	0	0
Total Capital Appropriation	614	0	7 734	<i>N/A</i>	116 000	5 000	5 000
Represented by:							
Purchase of non-financial assets	0	0	2 799	<i>N/A</i>	0	0	0
Other items	614	0	4 935	<i>N/A</i>	116 000	5 000	5 000
Total items	614	0	7 734	<i>N/A</i>	116 000	5 000	5 000
PURCHASE OF NON-CURRENT ASSETS							
Funded by Capital Appropriation	0	0	2 799	<i>N/A</i>	0	0	0
Total amount funded	0	0	2 799	<i>N/A</i>	0	0	0

TABLE 3.10: NOTE OF ADMINISTERED NON-FINANCIAL ASSETS - SUMMARY OF MOVEMENT (Budget Year 2001-02)						
	Land	Buildings	Total Land & Buildings	Infrastructure, Plant & Equipment	Intangibles	TOTAL
	\$'000	\$'000	\$'000	\$'000	\$'000	\$'000
Gross value						
Actual at 1 July 2001 (opening)	54 819	15 324	70 143	12	5 000	75 155
Additions *	2 799	0	2 799	0		2 799
Disposals	0	0	0	0	0	0
Other movements	0	0	0	0	0	0
As at 30 June 2002 (closing)	57 618	15 324	72 942	12	5 000	77 954
Accumulated Depreciation/ Amortisation						
As at 1 July 2001 (opening)	0	349	349	11	42	402
Disposals	0	0	0	0	0	0
Charge for the reporting period	0	363	363	1	278	642
Other movements	0	0	0	0	0	0
As at 30 June 2002 (closing)	0	712	712	12	320	1 044
Net book value as at 30 June 2002 (closing book value)	57 618	14 612	72 230	0	4 680	76 910
Net book value as at 1 July 2001 (opening book value)	54 819	14 975	69 794	1	4 958	74 753
* TOTAL ADDITIONS						
	Land	Buildings	Total Land & Buildings	Infrastructure, Plant & Equipment	Intangibles	TOTAL
	\$'000	\$'000	\$'000	\$'000	\$'000	\$'000
Self funded	0	0	0	0	0	0
Appropriations	2 799	0	2 799	0	0	2 799
TOTAL	2 799	0	2 799	0	0	2 799

Table 3.11: ADMINISTERED RECEIPTS (OTHER THAN APPROPRIATIONS)

	2000-01	2001-02	2001-02	
	Actual \$'000	Budget \$'000	Revised Budget \$'000	Variance %
Taxes, Fees & Fines				
Aircraft noise levy	40 300	45 101	41 125	-9%
Air passenger ticket levy	0	0	73 800	N/A
Airport land tax equivalents	10 710	9 000	9 000	0%
International Oil Pollution Compensation Fund Levy	13 909	5 900	2 478	-58%
Interstate Road Transport Act 1985 - Fines	45	100	100	0%
Interstate Road Transport Act 1985 - Registration Charges	27 242	27 000	30 000	11%
Marine Navigation Levy (a)	39 334	40 996	0	-100%
Navigation Act 1912 - Coastal Trading	230	190	190	0%
Part X of Trade Practices Act 1974	32	30	30	0%
Protection of the Sea Levy (a)	3 755	3 789	0	-100%
Parking fines at leased Federal airports	1 830	1 900	1 900	0%
Stevedoring Levy (Collection) Act 1998	29 981	31 430	31 430	0%
Miscellaneous	2 546	2 316	2 316	0%
Total	169 914	167 752	192 369	15%
Interest and Dividends				
Emerald Hill - Purchase of land	56	39	39	0%
Growth Centres - Municipal Works	134	111	111	0%
Natural disaster relief arrangements (b)	0	0	549	N/A
Northern Territory	5 011	4 900	4 900	0%
Provision for dividends from government business enterprises (c)	45 850	29 680	40 880	38%
Railway Agreement (Western Australia)	367	357	357	0%
Railway Standardisation (New South Wales and Victoria) Agreement	107	98	98	0%
Sewerage Agreements pursuant to Urban and Regional Development (Financial Assistance) Act 1974 (All States)	6 996	6 771	6 771	0%
Miscellaneous	5	0	0	0%
Total	58 526	41 956	53 705	28%
Other Sources of Non-Taxation Revenue				
Albury-Wodonga Development Corporation abolition and disposal of assets (c)	0	12 168	0	-100%
Cost recovery for Airport Building Controllers and Airport Environmental Officers at leased airports	2 839	3 045	2 477	-19%
Dairy Regional Assistance Programme reimbursements (b)	0	0	24 250	N/A
Marine Navigation Levy (a)	0	0	40 996	N/A
Miscellaneous	2 598	1 245	1 245	0%
Protection of the Sea Levy (a)	0	0	3 789	N/A
Sale of forms for motor vehicle compliance plates	7 238	7 057	7 057	0%
Total	12 675	23 515	79 814	239%
Loan Repayments				
Emerald Hill - Purchase of land	205	206	206	0%
Growth Centres - Municipal Works	228	251	251	0%
Natural disaster relief arrangements (b)	0	0	1 434	N/A
Northern Territory	2 368	2 459	2 459	0%
Railway Agreement (Western Australia)	375	377	377	0%
Railway Standardisation (New South Wales and Victoria) Agreement	192	192	192	0%
Sewerage Agreements pursuant to Urban and Regional Development (Financial Assistance) Act 1974 (All States)	2 165	2 384	2 384	0%
Other Loans and Receivables	403	746	1 000	34%
Total	5 936	6 615	8 303	26%
Equity Repayments				
Airservices Australia (AA)	25 000	30 000	30 000	0%
Australian National Railway Commission (AN)	15 552	0	0	0%
Total	40 552	30 000	30 000	0%
Proceeds from sales of land, PP&E and intangibles				
Sale of Sydney Airport Land	0	0	2 100	N/A
Total	0	0	2 100	N/A
TOTAL	287 603	269 838	366 291	36%

(a) Reclassification of the Marine Navigation and the Protection of the Sea Levies.

(b) Function transferred from the Department of Employment and Workplace Relations as part of the Administrative Arrangements Orders following the 2001 Federal Election.

(c) Albury-Wodonga Development Corporation abolition and disposal of assets reclassified as dividends from government business enterprises.

Notes to the Budgeted Financial Statements

1. Accounting Policy

The budgeted financial statements have been prepared on an accrual accounting basis, having regard to Statements of Accounting Concepts, and in accordance with:

- the Finance Minister's Orders;
- Australian Accounting Standard;
- Other authoritative pronouncement of the Australia Accounting Standards Boards; and
- The Consensus Views of the Urgent Issues Group.

2. Departmental and Administered items

Agency assets, liabilities, revenues and expenses are those items that are controlled by the Department that are used by the Department in producing its outputs and include:

- computers, plant and equipment used in providing goods and services;
- liabilities for employee entitlements;
- revenue from appropriations or independent sources in payment for outputs; and
- employee, supplier and depreciation expenses incurred in providing agency outputs.

Administered items are those items incurred in providing programmes that are controlled by the Government and managed, or oversighted, by the Department on behalf of the Government. These items include grant payments and levies, fees and fines.

3 Departmental Revenue

Revenue from Government represents the purchase of outputs from the Department by the Government and is recognised to the extent that it has been received into the Department's bank account.

Revenue from other sources, representing sales from goods and services, is recognised at the time that it is imposed on customers. Interest revenue is recognised on a proportional basis taking into account the interest rates applicable to the financial assets.

4. Departmental Expenses – Employees

Payments and net increases in entitlements to employees for services rendered in the financial year.

5. Departmental Expenses – Suppliers

Payments to suppliers for goods and services used in providing agency outputs

6. Departmental Expenses – Depreciation and Amortisation

Depreciable property plant and equipment, buildings and intangible assets are written-off to their estimated residual values over their estimated useful life to the Department, using straight-line calculation method.

7. Departmental Expenses – Net loss from disposal of assets

Reflects the difference between the book value of assets and sale proceeds.

8. Capital Use Charge

A charge for the use of capital levied on the Department at a rate of 11 per cent of net assets. Funding for this charge is included in the price of outputs.

9. Departmental Assets– Financial Assets

Primary financial asset relates to the Departments investments, which will be used to fund the Department's capital programme and employee entitlements.

10. Departmental Assets–Non-Financial Assets

These items represent future economic benefits that the Department will consume in producing outputs. The reported value represents the purchase price paid less depreciation incurred to date in using the asset.

11. Departmental Liabilities –Debt

Property lease incentives that the department has received. These incentives are written-off over the life of the lease.

12. Departmental Liabilities – Provisions and Payables

Provision has been made for the department's liability for employee entitlements arising from services rendered by employees. This liability includes unpaid annual leave and long service leave. No provision has been made for sick leave.

Provision has also been made for unpaid supplier expenses as at balance date.

13. Administered Revenue

Details of the range of taxation and non-taxation revenue collected by the department are provided in Table 3.11.

14. Administered Expenses – Goods and Services

Comprises the Sydney and Adelaide Noise Amelioration programmes.

15. Administered Expenses – Subsidies and Grants

Reflects a majority of the departments administered programmes, the most significant being: Local Government Financial Assistance Grants; National Highways and Roads of National Importance; Roads to Recovery Programme; and Federation Fund projects.

16. Administered Assets – Financial Assets

Comprise primarily investments in portfolio agencies and appropriation receivable.

PART D

Stevedoring Industry Finance Committee

AGENCY ADDITIONAL ESTIMATES STATEMENTS

SECTION 1

Overview

AGENCY OVERVIEW

The Stevedoring Industry Finance Committee (SIFC) is a statutory committee established under the *Stevedoring Industry Finance Committee Act 1977*. The Committee inherited obligations of the Australian Stevedoring Industry Authority. Since 1989, the Committee has been receiving claims for damages from waterside workers alleging asbestos-related injuries.

SIFC has been found by the High Court, in the *Crimmins* case, to inherit the liabilities of its predecessor, the Australian Stevedoring Industry Authority (ASIA) for claims for damages for asbestos-related diseases by former waterside workers. The High Court also found that ASIA owed a duty of care in regard to exposure to asbestos on the waterfront. The Supreme Courts of NSW and of Victoria, on appeal, have found ASIA in breach of that duty of care, in the *Gibson* and *Crimmins* test cases respectively.

With its liability clarified, SIFC is expeditiously resolving claims on just terms with claimants wherever possible, in line with the Model Litigant policy that forms part of the Attorney-General's Legal Services Directions.

SIFC contributes to the Transport and Regional Services Portfolio outcome of:

A better transport system for Australia and greater recognition and opportunities for local, regional and territory communities.

SIFC's output is: Resolved claims.

SUMMARY OF FINANCIAL PERFORMANCE

Appropriations

Pending the establishment of formal funding arrangements, SIFC settles litigation claims utilising the Advance to the Finance Minister funding. To date SIFC has received \$21.990m from the Advance to the Finance Minister in 2001-02.

The funding is provided in the form of equity injections from the Government.

Table 1.1: 2001-02 Appropriations and Other Revenue

	2000-01 Actual \$'000	2001-02 Budget ^(a) \$'000	2001-02 Additional Estimate \$'000	2001-02 Revised Budget \$'000	Variance ^(b)
<u>Appropriation Bill No. 4</u>					
Equity Injections and Loans					
Departmental Equity Injections	0	0	21,990	21,990	+100%
<i>Total</i>	0	0	21,990	21,990	+100%
<u>Total Appropriations</u>					
Departmental	0	0	21,990	21,990	+100%
<i>Total</i>	0	0	21,990	21,990	+100%

Notes:

- (a) Since the 2001-02 Portfolio Budget Statements, SIFC has been reclassified from the Public Financial Enterprises sector to General Government sector and now receives appropriations from Government.
- (b) Variance represents percentage change in 2001-02 Revised estimate from the 2001-02 Budget estimate.

SECTION 2

Outcomes and Outputs Information

OUTCOMES AND OUTPUTS INFORMATION

SIFC contributes to the Transport and Regional Services Portfolio outcome of:

A better transport system for Australia and greater recognition and opportunities for local, regional and territory communities.

Members of the community who sustained asbestos-related injuries through their employment on the Australian waterfront have an opportunity to bring legitimate claims for damages against SIFC.

SIFC's output is: Resolved claims.

RESOURCES

TABLE 2.1: SUMMARY OF CAPITAL RESOURCES

	2000-01 Actual \$'000	2001-02 Budget ^(a) \$'000	2001-02 Revised Budget \$'000	Variance	2002-03 Estimate \$'000	2003-04 Estimate \$'000	2004-05 Estimate \$'000
Capital Resources							
Departmental Equity Injections ^(b)	0	0	35,000	N/A	0	0	0
Total	0	0	35,000	N/A	0	0	0

Notes:

- (a) Since the 2001-02 Portfolio Budget Statements, SIFC has been reclassified from the Public Financial Enterprises sector to General Government sector and now receives appropriations from Government.
- (b) Represents funding for the full year. Funding of \$21.990m has been sought at Additional Estimates. The balance will be sought from the Advance to the Finance Minister as needed.

OUTPUT PERFORMANCE INFORMATION

To minimise litigation costs and to expedite claims resolution, SIFC policy is to settle by negotiation as many as possible of valid asbestos related injury claims made against it. This accords with the Model Litigant policy that is part of the Commonwealth Legal Services Directions.

SIFC attempts to negotiate with third parties, which it identifies as being liable, for their contribution towards settlements.

Performance Indicators

Quality:

- Administration of legal settlements in accordance with legislation and Government policy.

SECTION 3

Budgeted Financial Statements

TABLE 3.1: BUDGETED DEPARTMENTAL STATEMENT OF FINANCIAL PERFORMANCE							
	2000-01	2001-02	2001-02 Revised Budget		2002-03	2003-04	2004-05
Notes	Actual \$'000	Budget ⁽¹⁾ \$'000	\$'000	Variance %	Estimate \$'000	Estimate \$'000	Estimate \$'000
REVENUES							
Interest	328	0	200	N/A	200	200	200
TOTAL REVENUE	328	0	200	N/A	200	200	200
EXPENSES							
Suppliers	18 519 ⁽²⁾	0	24 523 ⁽²⁾	N/A	20 200	20 200	15 200
TOTAL EXPENSES	18 519	0	24 523	N/A	20 200	20 200	15 200
NET SURPLUS OR DEFICIT	(18 191)	0	(24 323)	N/A	(20 000)	(20 000)	(15 000)
Capital Use Charge (CUC)	0	0	0	0%	0	0	0
NET SURPLUS OR DEFICIT AFTER CUC	(18 191)	0	(24 323)	N/A	(20 000)	(20 000)	(15 000)
Accumulated funds at Beginning of Year	11 163	0	(7 028)	N/A	(31 351)	(51 351)	(71 351)
ACCUMULATED FUNDS AT END OF YEAR	(7 028) ⁽²⁾	0	(31 351)	N/A	(51 351)	(71 351)	(86 351)

⁽¹⁾ Since the 2001-02 Portfolio Budget Statements, SIFC has been reclassified from the Public Financial Enterprises sector to General Government sector and now receives appropriations from Government.

⁽²⁾ The negative accumulated results at the end of 2000-01 arise from the application of AAS8 'Events Occurring after Reporting Date' to settlements made with asbestos claimants by SIFC after 30 June. AAS8 required the write back into the 2000-01 accounts of \$10.677m of such post 30 June settlements, although these settlements were made using funding, in the form of equity injections after 30 June 2001, which is not recognised in the 2000-01 accounts.

TABLE 3.2: BUDGETED DEPARTMENTAL STATEMENT OF FINANCIAL POSITION							
	2000-01	2001-02	2001-02		2002-03	2003-04	2004-05
Notes	Actual	Budget ⁽¹⁾	Revised Budget	<i>Variance</i>	Estimate	Estimate	Estimate
	\$'000	\$'000	\$'000	%	\$'000	\$'000	\$'000
ASSETS							
FINANCIAL ASSETS							
Cash	3 443	0	5 649	<i>N/A</i>	(14 351)	(34 351)	(49 351)
Receivables	206	0	0	<i>0%</i>	0	0	0
Total Financial Assets	3 649	0	5 649	<i>N/A</i>	(14 351)	(34 351)	(49 351)
TOTAL ASSETS	3 649	0	5 649	<i>N/A</i>	(14 351)	(34 351)	(49 351)
LIABILITIES							
PROVISIONS & PAYABLES							
Suppliers	10 677	0	2 000	<i>N/A</i>	2 000	2 000	2 000
Total Provisions & Payables	10 677	0	2 000	<i>N/A</i>	2 000	2 000	2 000
Total Liabilities	10 677	0	2 000	<i>N/A</i>	2 000	2 000	2 000
EQUITY							
Total Accumulated Results	(7 028)	0	(31 351)	<i>N/A</i>	(51 351)	(71 351)	(86 351)
Total Capital	0	0	35 000	<i>N/A</i>	35 000	35 000	35 000
Total Equity	(7 028)	0	3 649	<i>N/A</i>	(16 351)	(36 351)	(51 351)
TOTAL LIABILITIES & EQUITY	3 649	0	5 649	<i>N/A</i>	(14 351)	(34 351)	(49 351)
Current Liabilities	10 677	0	2 000		2 000	2 000	2 000
Non-current Liabilities	0	0	0		0	0	0
Current Assets	3 649	0	5 649		(14 351)	(34 351)	(49 351)
Non-current Assets	0	0	0		0	0	0

⁽¹⁾ Since the 2001-02 Portfolio Budget Statements, SIFC has been reclassified from the Public Financial Enterprises sector to General Government sector and now receives appropriations from Government.

TABLE 3.3: BUDGETED DEPARTMENTAL STATEMENT OF CASH FLOWS							
	2000-01	2001-02	2001-02		2002-03	2003-04	2004-05
	Actual	Budget ⁽¹⁾	Revised	<i>Variance</i>	Estimate	Estimate	Estimate
	\$'000	\$'000	Budget	<i>%</i>	\$'000	\$'000	\$'000
			\$'000				
OPERATING ACTIVITIES							
Cash received							
Interest	356	0	200	<i>N/A</i>	200	200	200
Other			206				
Interest bearing bank facilities	7 977	0	0	<i>0%</i>	0	0	0
Total Cash Received	8 333	0	406	<i>N/A</i>	200	200	200
Cash used							
Payments to Suppliers	9 066	0	33 200	<i>N/A</i>	20 200	20 200	15 200
Total Cash Used	9 066	0	33 200	<i>N/A</i>	20 200	20 200	15 200
NET CASH FROM OPERATING ACTIVITIES	(733)	0	(32 794)	<i>N/A</i>	(20 000)	(20 000)	(15 000)
FINANCING ACTIVITIES							
Cash received							
Capital Injections	0	0	35 000	<i>N/A</i>	0	0	0
Total Cash Received from Financing Activities	0	0	35 000	<i>N/A</i>	0	0	0
NET CASH FROM FINANCING ACTIVITIES	0	0	35 000	<i>N/A</i>	0	0	0
NET (DECREASE) / INCREASE IN CASH HELD	(733)	0	2 206	<i>0%</i>	(20 000)	(20 000)	(15 000)
Cash at beginning of year	4 176	0	3 443	<i>N/A</i>	5 649	(14 351)	(34 351)
Cash at end of year	3 443	0	5 649	<i>N/A</i>	(14 351)	(34 351)	(49 351)

⁽¹⁾ Since the 2001-02 Portfolio Budget Statements, SIFC has been reclassified from the Public Financial Enterprises sector to General Government sector and now receives appropriations from Government.

TABLE 3.4: BUDGETED DEPARTMENTAL CAPITAL BUDGET STATEMENT							
	2000-01	2001-02	2001-02 Revised Budget⁽²⁾	<i>Variance</i>	2002-03	2003-04	2004-05
	Actual	Budget ⁽¹⁾	Budget⁽²⁾	<i>Variance</i>	Estimate	Estimate	Estimate
	\$'000	\$'000	\$'000	<i>%</i>	\$'000	\$'000	\$'000
CAPITAL APPROPRIATION							
Total Capital Appropriation							
Total Equity Injections	0	0	35 000	<i>N/A</i>	20 000	20 000	15 000
Total Capital Appropriation	0	0	35 000	<i>N/A</i>	20 000	20 000	15 000
Represented by:							
Purchase of non-financial assets	0	0	0	<i>0%</i>	0	0	0
Other items	0	0	35 000	<i>N/A</i>	20 000	20 000	15 000
Total items	0	0	35 000	<i>N/A</i>	20 000	20 000	15 000
PURCHASE OF NON-CURRENT ASSETS							
Funded by Capital Appropriation	0	0	0	<i>0%</i>	0	0	0
Funded Internally by Department resources	0	0	0	<i>0%</i>	0	0	0
Total amount funded	0	0	0	<i>0%</i>	0	0	0

⁽¹⁾ Since the 2001-02 Portfolio Budget Statements, SIFC has been reclassified from the Public Financial Enterprises sector to General Government sector and now receives appropriations from Government.

⁽²⁾ For 2001-02, of the \$35m equity injection, \$21.990m has been provided through the Advance to the Finance Minister in the form of equity injections. It is anticipated that a further \$13.010m will be required this financial year.

GLOSSARY

Accrual Accounting	System of accounting where items are brought to account and included in the financial statements as they are earned or incurred, rather than as they are received or paid.
Accumulated Depreciation	The aggregate depreciation recorded for a particular depreciating asset.
Additional estimates	Where amounts appropriated at Budget time are insufficient, Parliament may appropriate more funds to portfolios through the Additional Estimates Acts. This is the Additional Estimates process.
Additional Estimates Bills or Acts	These are Appropriation Bills 3 and 4, and a separate Bill for the Parliamentary Departments (Appropriations (Parliamentary Departments) Bill (No 2). These Bills are introduced into Parliament after the Budget Bills. In 2001-2002, the Budget was introduced in May 2001, and the Additional Estimates Bills will be introduced in February 2002.
Administered Items	Expenses, revenues, assets or liabilities managed by agencies on behalf of the Commonwealth. Agencies do not control administered items, but administer them according to legislation or other directives of Government/Ministers. Administered expenses include grants, subsidies and benefits. Administered revenues include taxes and other levies collected by agencies on behalf of the Commonwealth but not available for use by those agencies.
Administrative Arrangements Order	A document issued by the Governor general on the advice of the Federal Executive Council. It defines the matters dealt with by a Department of State, and the legislation administered by the Minister of each Department of State. It provides the authority for Ministers to take decisions in respect of their portfolios.
Appropriation	An authorisation by Parliament to spend moneys from the Consolidated Revenue Fund.
Annual Appropriation	Two appropriation Bills are introduced into Parliament in May and comprise the Budget. Further Bills are introduced later in the financial year as part of the additional estimates. Parliamentary departments have their own appropriations.
Assets	Future economic benefits controlled by an entity as a result of past transactions or other past events.
Capital expenditure	Expenditure by an agency on capital projects, for example purchasing a building.
Capital Use Charge	The Capital Use Charge is a dividend requirement levied on Commonwealth General Government Sector agencies and authorities. The Capital Use Charge payment is based on those agencies and authorities Departmental net assets at financial year end. Funding for the Capital-Use Charge is included in agencies and authorities Departmental price of outputs appropriation.
Departmental items	Assets, liabilities, revenues and expenses which are controlled by the agency in providing its outputs. Departmental items would generally include computers, plant and equipment assets used by agencies in providing goods and services and most employee expenses, supplier costs and other administrative expenses incurred.
Depreciation	An expense recognised systematically for the purpose of allocating the depreciable amount of a depreciable asset over its useful life.

GLOSSARY (cont)

Deprival asset valuation	Values non-financial assets according to the current cost of their replacement. That is, non-financial assets are valued at the lowest cost of replacing the gross 'service potential' of those assets.
Equity or Net Assets	Residual interest in the assets of an entity after deduction of its liabilities.
Expense	Total value of all of the resources consumed in producing goods and services.
General Government Sector	In accordance with international <i>Government Finance Statistics</i> conventions, the Commonwealth general government sector includes all departments and other administrative units, statutory authorities and other entities which are predominantly funded, directly or indirectly, by the Commonwealth Government.
Historical cost	The original cost of acquisition of an asset, including any costs associated with acquisition. Under Australian Accounting Standard 10 'Acquisition of Non Current Assets' assets need to be reported initially at acquisition (historical cost). The Commonwealth's financial reporting requirements issued under the Finance Minister's Orders require the subsequent revaluation of non current assets to their deprival value within every three years.
Liabilities	Future sacrifices of economic benefits that an entity is presently obliged to make to other entities as a result of past transactions or other past events.
Location	An indicator of where the impact of a Government directed activity occurs is used where an output or administered item is provided to specific locations.
Measure	A decision by the Cabinet or Ministers that has been finalised since the 2001-02 Budget and has resulted in a change in expenditure in the years 2001-02 to 2004-05.
Net surplus or deficit	Equals revenue less expense.
New Works	The construction of new items (assets).
Outcomes	The results, impacts or consequences of actions by the Commonwealth on the Australian community.
Output Groups	The aggregation of outputs.
Outputs	The goods and services produced by agencies for the government, external organisations or individuals. Outputs include goods and services for other areas of government external to the agency.
Price	The amount the government or the community or other purchaser pays for the delivery of agreed outputs.
Public Financial Enterprises Sector	In accordance with international <i>Government Finance Statistics</i> conventions, the Public Financial Enterprises Sector includes Commonwealth entities that are self funded, which do not receive any funding from the Commonwealth Government.
Quality	The characteristics by which customers or stakeholders judge the effectiveness of an output or administered programme.
Quantity	Provides an indication of the capacity of the agency to provide a given level of service. It measures the planned size, count or volume measures of an output or administered item – how many or how much.

GLOSSARY (cont)

Replacement	The construction or purchase of times in place of existing assets.
Restoration	The repair or maintenance of existing items (assets).
Revenue	Total value of resources earned or received to cover the production of goods and services.
Special Appropriations	Moneys appropriated by Parliament in an Act separate to an annual Appropriation Act, where the payment is for a specified amount. Special appropriations are not subject to Parliament's annual budget control, unlike the annual appropriations.

ABBREVIATIONS

AAO	- Administrative Arrangements Order
ACT	- Australian Capital Territory
AN	- Australian National Railway Commission
ASIA	- Australian Stevedoring Industry Authority
ASL	- Average Staffing Level
CUC	- Capital Use Charge
GST	- Goods and Services Tax
MIFCo	- Maritime Industry Finance Company Limited
NSW	- New South Wales
PAES	- Portfolio Additional Estimates Statements
PBS	- Portfolio Budget Statements
SACL	- Sydney Airport Corporation Limited
SIFC	- Stevedoring Industry Finance Committee

INDEX

A

- Abbreviations 92
- ACT – Assistance for water and sewerage services 26, 39
- ACT – compensation for the effects of national capital influence on the costs of providing municipal services 26, 39
- Administered Programme Groups 1 39, 43-47
- Administered Programme Groups 2 40, 48-49
- Air Passenger Ticket Levy 28, 32
- Location Specific Pricing for Airport Control Towers, Subsidy for Transition to 39
- Ansett – Rapid Route Recovery Scheme 25, 27-28, 39, 43
- Appropriations (See Resources)
- Australian National Railway Commission (AN), management of residual issues of former 25, 40
- Australian Rail Track Corporation equity injection 26, 42
- Australian Stockman’s Hall of Fame and Outback Heritage Centre 25, 28, 32
- Australian Transport Safety Bureau (ATSB) 22, 23, 37
- Australia’s response to foot and mouth disease and other quarantine risks 25, 40, 48
- Asia Pacific Space Centre – equity funding 26, 28, 32
- Aviation & Airports Policy Division 22, 23, 37

B, C

- Bass Strait Passenger Vehicle Equalisation Scheme 39
- Business Services Division 22, 23, 37
- Compensation payment to SACL for the sale of Sydney Airport Land 25, 39, 45
- Cross-Modal and Maritime Transport Division 20, 22, 23, 43, 52, 57, 58, 61-63

D

- Dairy Regional Assistance Programme 21, 25, 39, 45
- Department of Transport and Regional Services
 - 2001-02 Appropriations and Other Revenue – Tables 1.1 24
 - Budgeted Financial Statements 56-70
 - Capital Resources – Table 2.4 42
 - Departmental Outputs Framework 35-37
 - New Measures 27-32
 - Operating Expenses - Administered Programmes - Table 2.2 39-40
 - Operating Expenses – Price of Outputs – Table 2.3 41
 - Organisational Structure 22
 - Output Performance Information 50
 - Overview 21
 - Performance Information for Administered Programmes - Tables 2.5 – 2.7 43-49
 - Performance Information for Output Group 2 - Table 2.8 50
 - Resources 24, 38-42
 - Summary of Measures since the 2001-02 Budget – Table 1.3 27-28
 - Summary of Operating and Capital Resources – Table 2.1 38
 - Summary of Planned Financial Performance 53-55
 - Variations to Appropriations - Table 1.2 25-26

INDEX (cont)

E, F

- Ex-gratia Disaster Relief Packages 21
- Ex-gratia Disaster Relief Package – 2001 Bushfire Relief Appeal 25, 27, 31, 39, 44
- Ex-gratia Disaster Relief Package – Transportation costs for the American Helitankers 25, 27, 31, 39, 44
- Ex-gratia Disaster Relief Package – Sugar Industry Assistance 25, 40, 48
- Economic Research and Portfolio Policy Division 22, 23, 37
- Federation Fund Projects 26, 40
- Financial Statements (Budgeted)
 - Department 56-70
 - SIFC 85-88
 - User Guide 7
- Flood Assistance Package – Small Business Grants 25, 39, 45
- Flood Recovery Fund 25, 39
- Foundation for Rural and Regional Renewal 25, 39

G, H, I, J, K, L

- Glossary 89
- Gold Coast Light Rail Project 26, 28, 31, 39
- Information Services & Executive Services Division 22, 23, 37
- International Civil Aviation Organisation – contribution 40
- International Maritime Organisation – contribution 25, 40
- Interstate Road Transport Fees 26, 40
- Lismore Levee Programme 26, 28, 32, 39, 47
- Local Government Development Programme 39, 42
- Local Government Financial Assistance Grants 26, 39
- Local Government Incentive Programme 39, 47

M

- Mainline Interstate Railway Track, Upgrade of the 25, 40
- Measures
 - Department 27-32
- MIFCo, Payments to 26, 40

N

- National Highway and Roads of National Importance 26, 40
- National Road Transport Commission 40
- National Disaster Memorials 21
- Natural Disaster Relief Arrangements 21, 26, 39, 42, 47
- Natural Disaster Risk Management Studies Programme 21, 47
- Newcastle Structural Adjustment Fund 39
- Noise Amelioration for Adelaide Airport, Implementation of 25, 39
- Noise Amelioration for Sydney Airport, Implementation of 39

INDEX (cont)

O

- OECD Road Transport – contribution 40
- Oil Pollution Compensation Fund 26, 39
- Output Groups
 - Department
 - Transport systems which are safer, more efficient, internationally competitive, sustainable and accessible 35-37, 41
 - Regional communities which have better access to opportunities and services and which are able to take the lead in their own planning and development 35-37, 41, 50
 - Local Governments which serve their communities more effectively and efficiently 35-37, 41
 - Territories in which residents will have the same opportunities and responsibilities as other Australians enjoy in comparable communities 35-37, 41

P, Q

- Payment Scheme for Airservices Australia's Enroute Charges 25, 27, 31, 40, 48
- Portfolio
 - Additional Estimates and Variations – Portfolio Level 13
 - Overview 11
 - Resources 14
 - Structure 12

R

- Regional and Rural Development Grant 39
- Regional and Rural Research Information and Data 39
- Regional Assistance Programme 21, 25, 39, 44
- Regional Flood Mitigation Programme 26, 39
- Regional Policy Division 22, 23, 37
- Regional Programmes Division 22, 23, 37, 44-46
- Regional Solutions Programme 25, 39
- Remote Air Services Subsidy Scheme 25, 39, 46
- Relief for Stranded Ansett Passengers 25, 27-28, 39, 43
- Resourcing
 - Department
 - 2001-02 Appropriations and Other Revenue – Table 1.1 24
 - Capital Resources – Table 2.4 42
 - Operating Expenses – Administered Programmes – Table 2.2 39-40
 - Operating Expenses – Price of Outputs – Table 2.3 41
 - Summary of Operating and Capital Resources – Table 2.1 38
 - Variations to Appropriations - Table 1.2 25-26
 - SIFC
 - 2001-02 Appropriations and Other Revenue - Table 1.1 78
 - Summary of Capital Resources – Table 2.1 81
- Road Safety Black Spot Programme 26, 39
- Roads to Recovery Programme 40
- Roads to Recovery Programme funding for IOTs and unincorporated areas 40
- Rockhampton Airport Runway, Upgrade of 40
- Rural Communities Programme 39
- Rural Domestic Violence 39, 45

INDEX (cont)

R (cont)

- Rural Plan 39
 - Rural Transactions Centres 26, 39
-

S

- Scoresby freeway, Construction of new 27, 30
 - Stevedoring Industry Finance Committee
 - 2001-02 Appropriations and Other Revenue – Tables 1.1 78
 - Budgeted Financial Statements 85-88
 - Outcomes and Output Information 81
 - Output Performance Information 82
 - Overview 77
 - Resources 78, 81
 - Summary of Capital Resources – Table 2.1 81
 - Summary of Financial Performance 78
 - Special Structural Adjustment Package for the South West Forests Region of Western Australia 39
 - Structural Adjustment Package for the Wide Bay Burnett Region in Queensland 25, 27, 30, 39, 44
 - Stronger Regions Programme 25, 27-29
 - Supermarket to Asia 40
 - Sustainable Regions Programme 25, 27, 30, 39, 44
 - Sydney West Airport – Land Acquisition and Works 25, 39, 42, 45
-

T, U, V, W, X, Y, Z

- Tamworth Australasian-Pacific Aeronautical College 25, 27, 30, 40, 48
- Tasmanian Freight Equalisation Scheme 25, 40
- Tasmanian Rail Track Upgrading 40
- Territories and Local Government Division 22, 23, 37, 44-45, 47-48, 50
- Transport Programmes Division 22, 23, 37, 43, 48-49
- Transport Regulation Division 22, 23, 37, 45
- Unauthorised Boat Arrivals 25, 28, 32
- Understanding Rural Australia 39
- Upgrade of Canberra Airport to international wide bodied jet standard 40, 49
- User Guide 7-8
- Year of the Outback, 2002 25, 39

